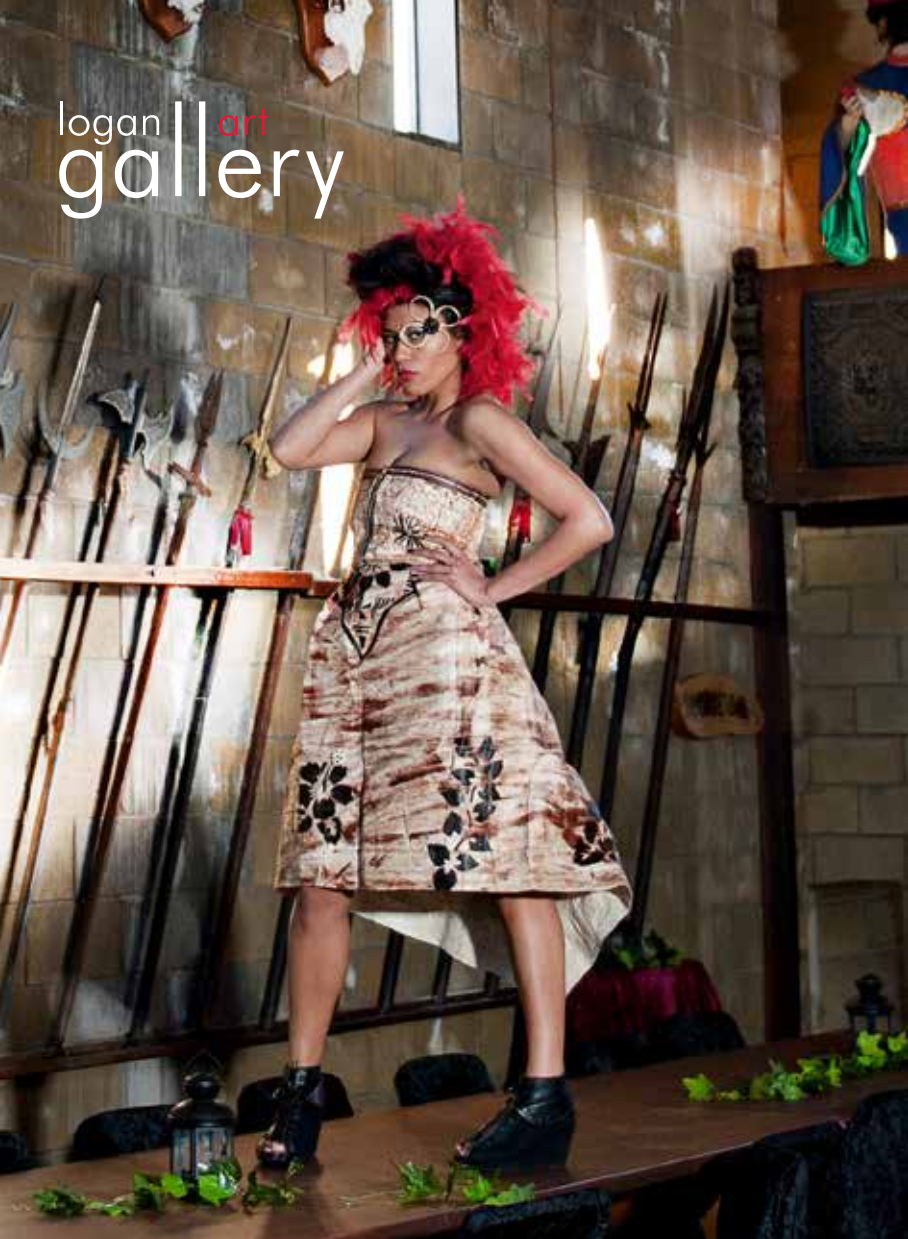


logan art  
gallery



2014 Exhibition Program



# Welcome to the Logan Art Gallery

Logan Art Gallery celebrates the diverse practices of visual artists, craft workers and designers and presents a dynamic exhibition program for residents and visitors to the region. Exhibitions feature touring exhibitions, local artists, visiting artists and works from the Logan Art Collection.

An extensive range of free public programs is offered and includes guided tours, practical workshops, special events and artist talks. A dedicated Young People's Gallery showcases exhibitions for young people or by young people and provides fun, interactive activities for younger visitors.

## Location

Logan Art Gallery is located on the corner of Wembley Road and Jacaranda Ave, Logan Central QLD 4114.

## How to find us

**By train:** Woodridge Station operates on the Beenleigh line and is approximately 500 metres from the gallery, via Railway Parade and Wembley Road.

**By bus:** there are several bus stops near the corner of Wembley Road and Jacaranda Avenue, which is close to the gallery. For full details on all scheduled bus and school transport services contact Trans Info on 13 12 30 or visit TransLink website [www.translink.com.au](http://www.translink.com.au)

## Opening hours

Open 10 am to 5 pm Tuesday to Saturday. Admission is free!

Logan Art Gallery will be closed to the public on the following days for the installation of new exhibitions and holiday periods:

- 7 January
- 18 February
- 1 April
- 18 April (Good Friday)
- 19 April (Easter Saturday)
- 25 April (Anzac Day)
- 13 May
- 24 June
- 5 August
- 16 September
- 28 October
- 11 December
- 25 December 2014 to 2 January 2015

## Parking

Free parking for cars and buses is available at the front of the gallery; entry to the car park is on Wembley Road.

## Venue hire

The Logan Art Gallery, including its creative arts workshop, is available for private and community functions and events. For more information contact the gallery by phone on 07 3412 5519 or email [artgallery@logan.qld.gov.au](mailto:artgallery@logan.qld.gov.au).

## Gallery Store

The Logan Art Gallery Store showcases a unique range of handcrafted jewellery, ceramics, cards and gifts made by local artists.

## Group bookings

Large groups are encouraged to call and inform us of their intended visit. Logan Art Gallery staff will provide free tours to interested groups booking in at least a week in advance of their visit, and groups can also book practical activities to further enhance their visit. To call or make a booking telephone 07 3412 5519. For more information on exhibitions, programs, events and resources visit [www.logan.qld.gov.au/artgallery](http://www.logan.qld.gov.au/artgallery).

## Contact us

**Phone:** (07) 3412 5519

**Fax:** (07) 3412 5350

**Email:** [artgallery@logan.qld.gov.au](mailto:artgallery@logan.qld.gov.au)

**Website:** [www.logan.qld.gov.au/artgallery](http://www.logan.qld.gov.au/artgallery)





Garment by Janice Brown. From *Head and Sole: Swagga like us*. Photograph: Jay Romero

## 10 January - 15 February 2014

### **Head and sole: Swagga like us**

*Swagga like us* showcases designer street apparel and urban art forms by local street artists and designers from Queensland and the Pacific. The works on display are a statement of the global influence of hip hop and pop culture on Australian and Pacific Island youth today. Alongside the exhibition there will be a series of free live fashion shows, freestyle poetry and rap events, and digital graffiti-writing demonstrations in the gallery.

### **Head and sole: Caps & kicks**

As part of the *Head and sole* exhibition, *Caps & kicks* in the Young Peoples Gallery, features a range of baseball caps and street sneakers embellished by street artists from Queensland and the Pacific. People are invited into the gallery to create their own trademark design which they can place onto their shoes and make a statement in the street.

### **Sisters as artists**

This exhibition features artworks by two sisters, Barbara Limb and Xersa (née Christine Limb) that reveal the similarities and contrasts of their sisterly interactions as artists. Barbara Limb was involved in the early stages of the Logan Art Gallery as an exhibiting artist and as a volunteer. This exhibition, curated by Xersa, is a tribute to her sister who died in the year 2000.

### **Mark Davey: Floral decadence**

This exhibition focuses on the recent series of flower paintings by Edens Landing artist, Mark Davey.



June1, *Cookie Monster Shoes*, 2011



Xersa, *Through crumpled waters I will glide*, 2012, charcoal on cotton paper



21 February - 29 March 2014

**No Added Sugar: Australian Muslim Women's Arts Project**

On tour from Casula Powerhouse Arts Centre, Sydney, *No Added Sugar* is a ground-breaking visual arts exhibition that is the outcome of the national initiative, the *Australian Muslim Women's Arts Project*. This project aimed from the outset to engage participants, artists and audiences in a dialogue about identity, self-determination and personal development and change—be that through life experience or the process of art making itself. The core values articulated at the very start of the project: respect, trust and independence, have been the guide for the process throughout. The sincerity and integrity of this process is reflected in the openness of the artists to express themselves and to engage with complex, often confronting ideas through a diversity of media and concepts that reflect the rich complexity of the Australian Muslim experience.

**CASULA  
POWERHOUSE  
ARTS CENTRE**



Idil Abdullahi, *Erased*, 2012, digital print on metallic paper

**Mana Nowbar: Longing**

*Longing* is an installation by Iranian born artist, Mana Nowbar. The installation is a series of charcoal and ink works on paper and canvas covering the outside walls of a wood structure in the shape of a house. Nowbar started the *Longing* project by interviewing fellow Iranian immigrants and directing group discussions on issues of cultural identity (literature, poetry, myth). Both shared experiences and personal histories and memories became the inspiration for her paintings and drawings.

**The Islamic youth project**

This exhibition coordinated by artist and teacher Shamime Mustapha for the Young Peoples Gallery showcases the work of young Muslim women artists from the Logan community.



Mana Nowbar, *Longing* (detail), 2013, charcoal, pastel and ink



Brassai, Hungary/ France 1899-1984, (*A prostitute playing Russian billiards, Boulevard Rochechouart, Montmartre*) c.1932, printed c.1979. Gelatin silver photograph, ed. 41/50. Purchased 1996 with funds from ICI Australia Limited through the Queensland Art Gallery Foundation. Collection: Queensland Art Gallery

4 April – 10 May 2014

Queensland Festival of Photography throughout April

**EVER PRESENT**  
PHOTOGRAPHS FROM THE  
QUEENSLAND ART GALLERY  
COLLECTION 1850-1975

**QAGOMA**   
**TOURING**  
The Queensland Art Gallery | Gallery of Modern Art provides a program of touring exhibitions and related services to regional Queensland.

This Queensland Art Gallery | Gallery of Modern Art touring exhibition is a chronological survey of the history of photography from approximately 1850 to 1975, drawn from the Gallery's International, Asian and Australian Collections. The exhibition presents works by unknown nineteenth-century photographers alongside iconic images by the twentieth century's recognised masters of photography.

### **Marty Pouwelse: *Beauty of Nature's fury***

*Beauty of Nature's fury* is an exhibition of extraordinary photographs by professional photographer and 'storm-chaser', Marty Pouwelse. Many of these images feature spectacular lightening storms over Logan. The Regional Arts Development Fund is a Queensland Government through Arts Queensland and Logan City Council partnership to support local arts and culture.



Marty Pouwelse, *Lightning from Mt Coot-tha*, 2009, digital print



### **Workshop wonders XII**

A delightful selection of student works chosen from the Logan Art Gallery workshop program. This twelfth annual exhibition highlights the gallery's workshop program which is an integral part of the visual arts education and cultural experience in Logan City.

16 May - 21 June 2014

**Open Books +**

A travelling exhibition from the National Library of Wales, curated and toured by UK artist Mary Husted and Queensland artist Angela Gardner. This exhibition seeks to show together work by artists from the UK and Australia alongside Chinese artists working in the tradition of the folding book from the early twentieth century to the present day. Each of the artists in the exhibition use artists' books as part of their practice. They are all interested in the book as nexus between word and image, the development of story-telling through sequential pages and the possibility of pushing the 'book' into new artistic territory.

**Liz Horrigan, Sandra Johnson and Vikki Kindermann:  
Paper stories**

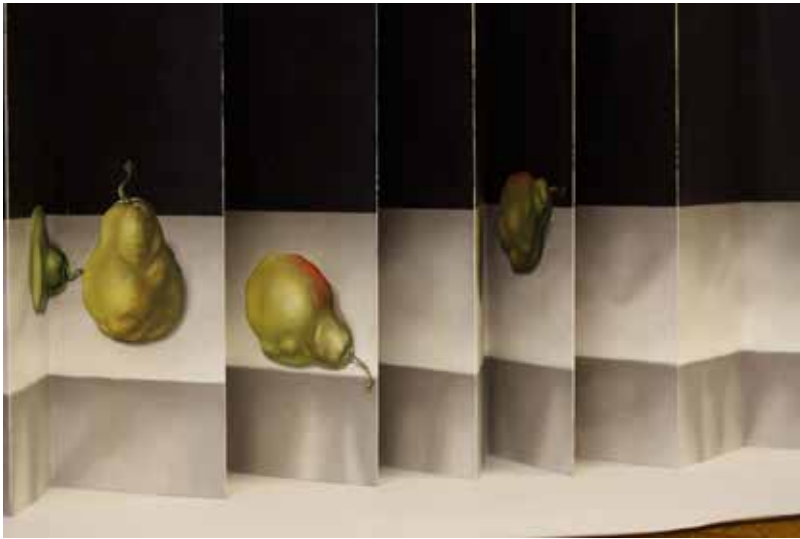
This exhibition by three local women artists, investigates the links between the past and the present, the personal and the universal. Using drawing, assemblage, collage and artist's books, these links are triggered by personal memories and stories that communicate through shared cultural and social experiences.

**Susan Wellingham: Objects of adornment**

An exhibition of textiles, jewellery and collages by Waterford artist Susan Wellingham.

**World Environment Day Posters**

*The World Environment Day Posters* exhibition brings together a collection of vibrant posters designed by Logan's young artists. World Environment Day is an annual event that is aimed at being the biggest and most widely celebrated global day for positive environmental action. World Environment Day celebrations began in 1972 and have grown to become one of the main vehicles through which the United Nations stimulates worldwide awareness of the environment and encourages political attention and action.



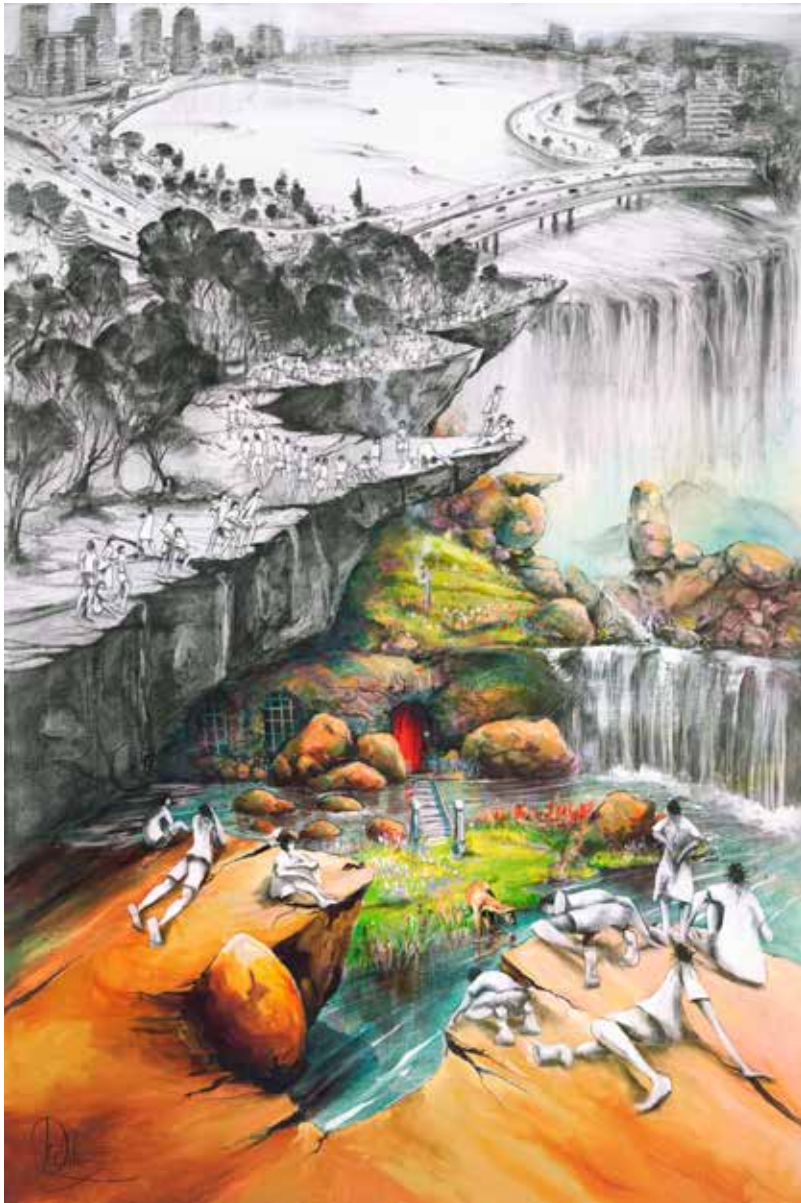
Alan Salisbury, *Pears on a table*, 2012, artists book, oil on paper



Sandra Johnson, *Windows 2009* (detail), recycled book collage







Don Waters, *Searching*, 2013, charcoal and acrylic on Belgium linen

27 June - 2 August 2014

**Don Waters: *Arcadia!***

This exhibition by well-known Jacobs Well artist, Don Waters, will feature his recent *Red door* series of paintings – youthful figures at play in a surrealist wooded landscape seemingly unaware of the enigmatic red door on the trunk of a tree. In reference to his new work, Waters has written: ‘In European Renaissance arts, Arcadia was celebrated as an unspoiled, harmonious wilderness. Presently the Oxford Dictionary defines Arcadia as “a pastoral paradise in poetic fantasy”, while the Merriam-Webster dictionary lists Arcadia as “a region or scene of simple pleasure and quiet”.’

**Shibukawa and Logan Sister Cities children’s art exchange exhibition**

A Sister City exchange project between Logan and Shibukawa, Japan, in which students from Shibukawa and Logan create artworks which are displayed in both cities.

**Esther Austin: *Another door opens***

Recent paintings by well-known and much-loved senior local artist, Esther Austin. The title of her new series of landscapes reflects her recent move from Heritage Park to Guanaba which has heralded a new phase in her life. She describes the theme of this exhibition as ‘new beginnings and the promise of future life embracing hope, beauty and serenity’.

8 August - 13 September 2014

## AH XIAN METAPHYSICA

This Queensland Art Gallery | Gallery of Modern Art touring exhibition focuses on one series of sculptures by Chinese/Australian artist Ah Xian. *Metaphysica* is the title given by Ah Xian to his ongoing series of bronze busts, a recent development in his work. Cast from life in a lengthy process, each figure is subtly different in patina and expression. Also distinguishing each one are the objects which rest on top of the busts' heads, ranging from deities and temples to animals and lamps.

That each of these diverse objects rests on top of the head is important to the artist, as he believes that this is the site where 'our wishes, imaginations, and spiritual souls linger around . . . The skull is like a skylight to link our emotions and souls with the imaginative possibilities of the spirit'. Like the philosophy of metaphysics, these sculptures joyously explore the nature of existence and imply something beyond the physical bodies we inhabit.



**QAGOMA**  
**TOURING**

The Queensland Art Gallery | Gallery of Modern  
Art provides a program of touring exhibitions and  
related services to regional Queensland.



**Queensland**  
Government

Ah Xian, *Metaphysica: Immortal on deer*, 2007, Bronze and brass. Gift of the artist through the Queensland Art Gallery Foundation 2010. Donated through the Australian Government's Cultural Gifts Program. Collection: Queensland Art Gallery



8 August - 13 September 2014

**Daniel Della-Bosca: *Untouched histories***

This exhibition by Heritage Park artist Daniel Della Bosca is the culmination of his Doctorate research at Griffith University. While the mathematics employed to create these works is complex, the finished objects are strangely beautiful, seemingly organic and reminiscent of forms found in nature, yet all computer generated. The exhibition includes works created by a three-dimensional printer, some of which have been further cast in silver, as well as digital prints and films.

**David Palmer: *Glassworks***

An exhibition of exquisite works in glass by Beenleigh glassblower, David Palmer. The Regional Arts Development Fund is a Queensland Government through Arts Queensland and Logan City Council partnership to support local arts and culture.



Queensland  
Government



Daniel Della-Bosca, *Sinistra*, 2012, sterling silver



David Palmer, *Orange Bowl*, 2013, glass

***He was only nineteen***

An exhibition of local family history, commemorating the Centenary of World War I.

19 September - 25 October 2014

**Artwaves 2014: Logan and adjacent areas secondary schools art exhibition**

Artwaves is an annual art exhibition of work sourced from the creative and talented high school students in the Logan region. Selected by visual art teachers in conjunction with gallery staff, Artwaves aims to demonstrate the wealth of imagination and creativity present in the city of Logan and adjacent areas.



Loc Wilson, Year 12, *Blind* (detail), digital print



Natasha Ramsay, Year 11, *No entry*, acrylic on canvas



Georgia Williams, Year 9, *Portrait*, pencil on paper

31 October - 6 December 2014

**Jacques van der Merwe: *New arrivals***

Jacques van der Merwe moved to Australia with his family from South Africa in 2008. He writes of his experience: 'Although the process was worthwhile, I was surprised by the complexity of the physical and emotional processes of migration. When I speak to other people, I realise that immigration is a life-changing experience for all people involved. I decided to make an ongoing artwork concerning what people experience during immigration'. This exhibition showcases expressively painted portraits of both new immigrants and refugees. Each portrait is accompanied by a recording of the sitter telling their own story that can be accessed via a smartphone using a QR code on the painting's label.

**Teraimana Tahiaata: *Timatanga (In the beginning / Creation)***

Teraimana Tahiaata is a young Crestmead artist whose beautiful woodcarvings are a product of his training with master Maori carvers in New Zealand. The Regional Arts Development Fund is a Queensland Government through Arts Queensland and Logan City Council partnership to support local arts and culture.



Queensland  
Government



LOGAN  
CITY COUNCIL



Teraimana Tahiaata, *Story teller's chair* (detail), 2010, totara wood, paua inlay. Rotorua Public Library Collection, New Zealand

**Kiny Ruharara: *Untold stories***

Kiny Ruharara is a youthful Kingston artist who came to Australia as a Congolese refugee. Although he has never had any formal training in art, he has taught himself to paint so that he can share some of his personal stories escaping war-torn Congo as a young child and living in refugee camps.



Jacques van der Merwe, *Senait Asmelash*, 2012, oil on canvas





Sandra Temple, *Patterns in Lace* (detail), 2011, mixed media



Judith Edwards-White, *Bird Watching* (detail), 2013, scratchboard

12 December 2014 - 17 January 2015

**Queensland Wildlife Artists Society Inc: *International Wildlife in Art 2014***

The Queensland Wildlife Artists Society Inc presents an exhibition of high quality paintings, pastel works, drawings and sculptures of wildlife. The society boasts international membership and raises funds for wildlife conservation.

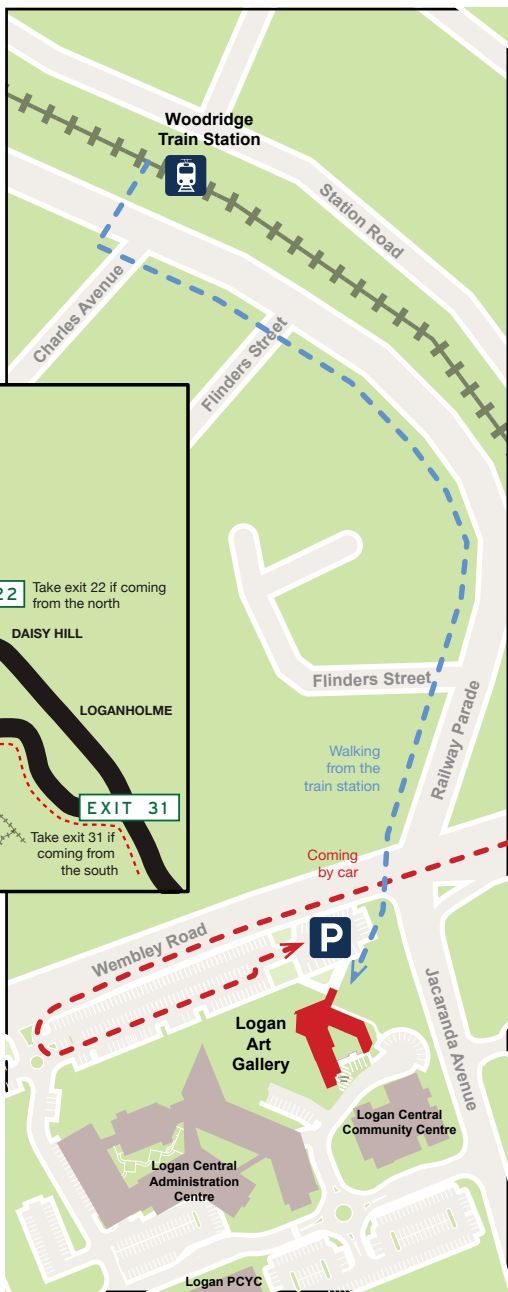


**Judith Edwards-White: *Scratching the surface***

*Scratching the surface* features recent works by Judith Edwards-White, Queensland's only Master Scratchboard Artist as recognised by the International Society of Scratchboard Artists. Edwards-White is also a regular contributor to the Queensland Wildlife Artists Society Inc, however this exhibition will focus on her images of domestic pets.

**Logan treasures: art, craft & design pop-up store**

Highlighting the best of Logan region's craft and design artists, perfect for all Christmas gift ideas.



**Cover image:** Garment by Janice Brown. From *Head and Sole: Swagga like us*. Photograph: Jay Romero