

logan art  
gallery

## 2015 Exhibition Program



# Welcome to Logan Art Gallery

Logan Art Gallery celebrates the diverse practices of visual artists, craft workers and designers and presents a dynamic exhibition program for residents and visitors to the region. Exhibitions feature touring exhibitions, local artists, visiting artists and works from the Logan Art Collection.

An extensive range of free public programs is offered and includes guided tours, practical workshops, special events and artist talks. A dedicated Young People's Gallery showcases exhibitions for young people or by young people and provides fun, interactive activities for younger visitors.

## LOCATION

Logan Art Gallery is located on the corner of Wembley Road and Jacaranda Ave, Logan Central QLD 4114.

## HOW TO FIND US

**By train:** Woodridge Station operates on the Beenleigh line and is approximately 500 metres from the gallery, via Railway Parade and Wembley Road.

**By bus:** There are several bus stops near the corner of Wembley Road and Jacaranda Avenue, which is close to the gallery. For full details on all scheduled bus and school transport services contact Trans Info on 13 12 30 or visit TransLink website [www.translink.com.au](http://www.translink.com.au)

## OPENING HOURS

Open 10 am to 5 pm Tuesday to Saturday.  
Admission is free!

Logan Art Gallery will be closed to the public on the following days for the installation of new exhibitions and holiday periods:

- 3 January
- 20 January
- 3 March
- 3 April (Good Friday)
- 4 April (Easter Saturday)
- 21 April
- 25 April (Anzac Day)
- 9 June
- 28 July
- 15 September
- 27 October
- 8 December
- 25 Dec 2015 to 2 January 2016

*Exhibition and dates are correct at the time of printing. Logan Art Gallery reserves the right to amend the exhibition program.*

## PARKING

Free parking for cars and buses is available at the front of the gallery; entry to the car park is on Wembley Road.

## VENUE HIRE

Logan Art Gallery, including its creative arts workshop, is available for private and community functions and events. For more information contact the gallery by phone on 07 3412 5519 or email [artgallery@logan.qld.gov.au](mailto:artgallery@logan.qld.gov.au).

## GALLERY STORE

The Logan Art Gallery Store showcases a unique range of handcrafted jewellery, ceramics, cards and gifts made by local artists.

## GROUP BOOKINGS

Large groups are encouraged to call and inform us of their intended visit. Logan Art Gallery staff will provide free tours to interested groups booking in at least a week in advance of their visit, and groups can also book practical activities to further enhance their visit. To make a booking telephone 07 3412 5519. For more information on exhibitions, programs, events and resources visit [www.logan.qld.gov.au/artgallery](http://www.logan.qld.gov.au/artgallery).

## CONTACT US

**Phone:** (07) 3412 5519

**Email:** [artgallery@logan.qld.gov.au](mailto:artgallery@logan.qld.gov.au)

**Fax:** (07) 3412 5350

**Website:** [www.logan.qld.gov.au/artgallery](http://www.logan.qld.gov.au/artgallery)

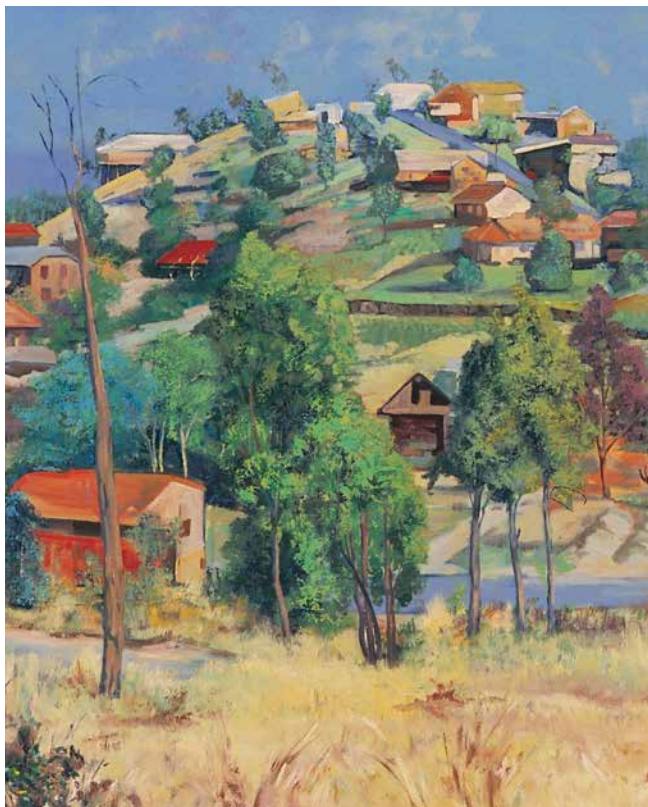


Installation of Danny Della-Bosca's exhibition *Untold histories* held at Logan Art Gallery in 2014

**23 JAN - 28 FEB**

# **Logan Art Gallery 20th Anniversary**

Logan Art Gallery celebrates its 20th anniversary with a series of exhibitions and events showcasing the talented artists, contributors and supporters who have helped make Logan Art Gallery what it is today.



## **Our legends**

An exhibition focusing on four major artists who have greatly contributed to our local cultural environment over the past twenty years: Esther Austin, Erik Berg, Lola Irvine and Reginald Knox.

Image: Esther Austin, *Daisy Hill* (detail), 1993, oil on canvas, Logan Art Collection

**23 JAN - 28 FEB**



## **Our benefactors**

A selection of some of the most significant donations to the Logan Art Collection over the past 20 years.

Image: Lawrence Daws, *Forestscape* (detail), oil on board, Logan Art Collection. Donated by Mr C.McC.W.Boyle under the Australian Government's Cultural Gifts Program 2014



## **Vision 20|20: Our future**

An exhibition of artwork by artists currently living in Logan, showcasing the wealth of our present cultural environment and looking forward, with anticipation, to an exciting and rewarding future.

Image: Michelle van Eps, *Craig Douglas reflects upon Ron and Jonathon McBurnie* (detail), 2010, oil on canvas, Logan Art Collection. Donated by Craig Douglas under the Australian Government's Cultural Gifts Program in memory of Mary and James Douglas

**6 MAR - 18 APR**



# The Homesickness Project

**ELIZABETH WOODS AND KEVIN LEONG**

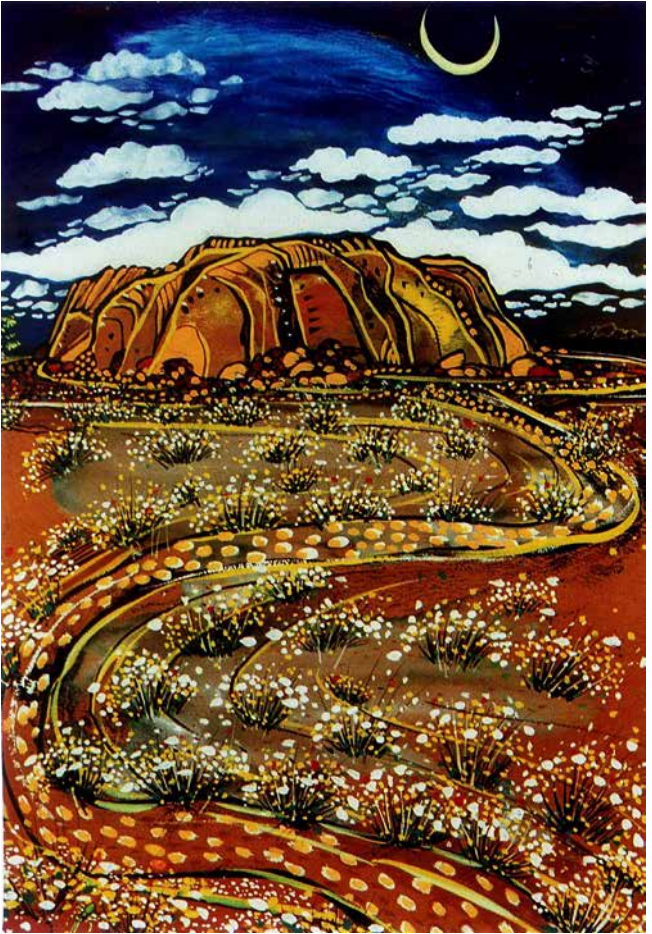
*The Homesickness Project* is an international arts project which takes homesickness as a starting point for broad discussions on how people make a home in the world. Since March 2014, the project has been situated in Logan City where ten local artists have been producing public events in partnership with community groups and residents. These events will be showcased in this exhibition at Logan Art Gallery, together with the work of Australian and international artists.

*This project has been assisted by the Australian Government through the Australia Council for the Arts, its arts funding and advisory body, and is supported by the Queensland Government through Arts Queensland, part of the Department of Science, Information Technology, Innovation and the Arts. It is also supported by the Regional Arts Development Fund, a Queensland Government through Arts Queensland and Logan City Council partnership to support local arts and culture.*

Image: Natasha Narain and the Logan Village Library Book Club, W.O.R.D.S. 2014, Logan Village Green temporary signage



6 MAR - 18 APR



## Ways of seeing

**RIA WILLERING**

Ten years after her first exhibition at Logan Art Gallery, Eagleby artist, Ria Willering returns for this exhibition of recent paintings, focusing on the Australian landscape and the flora and fauna seen through the eyes of a Dutch/Australian immigrant.

Image: Ria Willering, *Uluru*, acrylic on canvas, n.d

**6 MAR - 18 APR**



## **Recollections of home: NEW MOSAICS IN LOGAN GARDENS**

This exhibition uncovers the story of some mosaics in Logan Gardens. In 2013 students from the Intensive Language Class, Woodridge State High School worked with artists Robyn Pell and Isaac Patmore to create designs based on the culture, flora and fauna of their ancestral homelands. With the assistance of Monte Lupo Arts the designs were made into mosaic tiles and installed at Logan Gardens in 2014. This project was supported by funds from Division 2, Logan City Council.

Image: Robyn Pell, Isaac Patmore and students from the Intensive Language Class, Woodridge State High School, *Logan Gardens mosaics*, 2014, hand painted ceramic tiles



24 APR - 6 JUN



## The skin I'm in

**NICOLA HOOPER**

*The skin I'm in* is a collection of drawings and lithographs produced from Shailer Park artist, Nicola Hooper's 2014 residency at the Tanks Arts Centre in Cairns and is a culmination of two years of research while completing a Masters of Visual Arts at Griffith University.

*This exhibition is supported by the Regional Arts Development Fund, a Queensland Government through Arts Queensland and Logan City Council partnership to support local arts and culture.*

Image: Nicola Hooper, *She, the cannonball tree/floral uterus* (detail), 2014, hand coloured lithograph



**Queensland  
Government**



**24 APR - 6 JUN**



## **Big Garden**

**JAN DAVIS**

In *Big Garden* Jan Davis reflects on her twenty-five year relationship with the city of Lismore. An installation of native grasses, wallpaper, drawings and a timber 'viewing platform' generates an experience of separation from the land while looking closely at its botanical richness, geologic form and enduring history.

Image: Jan Davis, *Big Garden* (detail), 2014 installation at Lismore Regional Gallery

## **Workshop wonders XIII**

A delightful selection of student works chosen from Logan Art Gallery's workshop program. This thirteenth annual exhibition highlights the gallery's workshop program which is an integral part of the visual arts education and cultural experience in Logan City.

**24 APR - 6 JUN**



## **A temporal vision**

**ROBYN OLSEN**

In this, her third solo exhibition at Logan Art Gallery, Robyn Olsen, explores the play of light deflected through branches and reflected in water, in a beautiful series of paintings of the paperbark wetlands of North Stradbroke Island.

Image: Robyn Olsen, *The sky transposed*, 2013, acrylic on canvas

**12 JUN - 25 JUL**



## **Lamentation**

**KARIKE ASHWORTH**

This sensitive and beautiful exhibition delicately addresses the often uncomfortable subject of illness and death. Drawing from her personal experience of living through her mother's illness, Karike Ashworth combines the exquisite beauty of hand-crafted stitching and embroidery with the utilitarian uniformity of hospital linen to create an installation that is both enlightening and confronting.

Image: Karike Ashworth, *Comforters* (detail), 2013, female hospital gowns, stuffing, mp3 players/speakers, 12 audio tracks

12 JUN - 25 JUL



## Jorng Jam II (to remember)

*Jorng Jam II* is a collaborative exhibition featuring the work of four young Cambodian artists, film-maker Neang Kavich, sculptor Kong Vollak and photographers Kim Hak and Neak Sophal, and the Cambodian community in Logan. Having first exhibited the stories and photographs of people living in Phnom Penh (Our City Festival, 2014), the four artists visited Logan to create new work based on Cambodian Australian stories. The exhibition, *Jorng Jam II*, co-curated and produced by Pip Kelly, aims to connect Cambodian and Australian artists and communities in order to remember, reclaim and reinterpret historical knowledge and photographs from the pre-Khmer Rouge era.

*This project is supported by the Projects and Programs Fund and the Regional Arts Development Fund, a Queensland Government through Arts Queensland, part of the Department of Science, Information Technology, Innovation and the Arts.*

Image top: Kong Vollak, *Hard Work* (detail), 2013. Image bottom: Neak Sophal, *Chamnong* (detail), 2013. From the exhibition *Jorng Jam I*, The Bophana Centre, Phnom Penh, Cambodia, 25 January - 8 February 2014



Queensland  
Government



**12 JUN - 25 JUL**



## **The Australian circus and travelling show**

**NORMA BROPHY**

Born into a family of circus performers, Norma Brophy documents her life in the entertainment business, with bold paintings painted on canvas sheets taken from the family's original circus tent. These unique works beautifully capture the excitement, the camaraderie and the romance of the world of travelling entertainers.

Image: Norma Brophy, *Slim Dusty* (detail), acrylic on tent canvas



## World Environment Day posters

*World Environment Day posters* brings together a collection of vibrant artworks designed by Logan's young artists. World Environment Day is an annual event that is aimed at being the biggest and most widely celebrated global day for positive environmental action. World Environment Day celebrations began in 1972 and have grown to become one of the main vehicles through which the United Nations stimulates worldwide awareness of the environment and encourages political attention and action.

Image: Katrina Burgess, Grade 6, Kimberley Park State School



31 JUL - 12 SEP



## Indo Pop: Indonesian Art from APT7

This Queensland Art Gallery | Gallery of Modern Art touring exhibition features selected artworks by Indonesian artists from the most recent Asia Pacific Triennial of Contemporary Art, APT7.

Image: Uji Handoko Eko Saputro (aka Hahan), Indonesia b.1983, The Journey 2011, Synthetic polymer paint on canvas. Purchased 2011. Queensland Art Gallery Foundation. Collection: Queensland Art Gallery

QAGOMA  
TOURING



Queensland  
Government

The Queensland Art Gallery | Gallery of Modern Art provides a program of touring exhibitions and related services to regional Queensland.



31 JUL - 12 SEP



## Glory box, hope chest, bottom drawer

A collaborative exhibition of local women artists, examining the tradition of the 'glory box', and how it has evolved over the years. The exhibition, curated by Robyn Pell and Vikki Kindermann, explores various symbols attached to different cultural traditions.

*This exhibition is supported by the Regional Arts Development Fund, a Queensland Government through Arts Queensland and Logan City Council partnership to support local arts and culture.*

Image top: Chrys Zantis, *Berrinba mushroom* (detail), 2013, crochet, eco-dye and glass beads

Image bottom: Therese Flynn-Clarke, *Cycle of life* (detail), 2013, plant fibre, wool, glass beads, shells and seedpods



Queensland  
Government



**31 JUL - 12 SEP**



## **Haiku poem pots**

### **REDEEMER LUTHERAN COLLEGE**

Yugambah Museum launched Queensland's first Aboriginal Language App, featuring 1000 language words, phrases and Pictionary images. The *Write into art* program encouraged senior students to use the App to create artworks using Aboriginal language as a reference point. Students from Redeemer College responded enthusiastically to this program with a series of ceramic pots which incorporated written language and text embedded within the work.

Image left: Jieun Ha Haiku, Yr 9, Redeemer Lutheran College, *Poem Pot*, 2014

Image right: Vivian Chen, Yr 9, Redeemer Lutheran College, *Haiku Poem Pot*, 2014



**Yugambah Museum**  
Language & Heritage  
Research Centre

18 SEP - 24 OCT

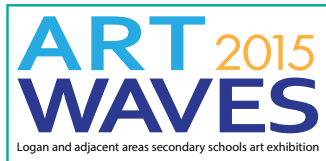


## Artwaves 2015

### LOGAN AND ADJACENT AREAS SECONDARY SCHOOLS ART EXHIBITION

*Artwaves* is an annual art exhibition of work sourced from the creative and talented high school students in the Logan region. *Artwaves* aims to demonstrate the wealth of imagination and creativity present in the city of Logan and adjacent areas.

Image: Monty Bryant, Year 12, *The subconscious*, 2014, acrylic on wood



**28 OCT - 5 DEC**



## **New designs in old wood**

**STEPHEN WHITBY**

Contemporary designer Stephen Whitby combines traditional woodworking techniques with recycled wood to produce innovative yet timeless works in timber.

Image: Stephen Whitby, *Stripendous drawers*, 2014, reclaimed Tasmanian blackwood and Pacific maple

**28 OCT - 5 DEC**



## **Away and home**

**RICHARD BLUNDELL**

An exhibition of recent paintings and works on paper by Daisy Hill artist Richard Blundell.

After five months travelling in Europe (France, Spain, Morocco, Portugal and Italy) without a camera and constantly drawing, Blundell returns to the familiar landscape of Daisy Hill.

Image: Richard Blundell, *Spoleto (detail)*, Italy 2012, watercolour and gouache on paper

**28 OCT - 5 DEC**



## **Logan treasures: art, craft & design pop-up store**

Highlighting the best of Logan region's artists, craftworkers and designers. Perfect for all Christmas gift ideas.



## Artists' faces

### RUNCORN STATE HIGH SCHOOL

An exhibition by students from Runcorn State High School featuring painted reproductions of famous portraits with the faces cut out. Each work is suspended away from the wall so that children can walk behind and place their own faces in the cut out hole and 'become' the famous person.

Image: Marion Fair, Chloe Simpson and Grady Martin, *After Picasso's Weeping woman* 1937, 2013, acrylic on board

**11 DEC - 16 JAN 2016**



## **Mulion-go (Like an eagle): Reginald Knox retrospective**

**REGINALD KNOX**

A retrospective exhibition of work by well-known local Aboriginal artist Reginald (Uncle Reg) Knox. Born in Goondiwindi in 1934, Uncle Reg is a Kamilaroi man and was raised at Toomelah Mission at Boggabilla. He has lived in Logan City for the past 40 years, winning admiration and respect over a long period for his outstanding artwork, contribution to the community and commitment to working with young people.

Image: Reginald Knox seated in front of one of his school murals



11 DEC - 16 JAN 2016



## Made OF Australia

ANNA-MARIE WALLACE

A showcase of the process and outcomes of the *Made OF Australia* project. *Made OF Australia* creates saggard-fired ceramic jewellery and homewares, each piece harnessing the elements to achieve unique works of art made entirely of the Australian landscape.

Image: Made OF Australia, *Cassowary series*, 2013, ceramic saggard fired stoneware clay and kangaroo leather

**11 DEC - 16 JAN 2016**



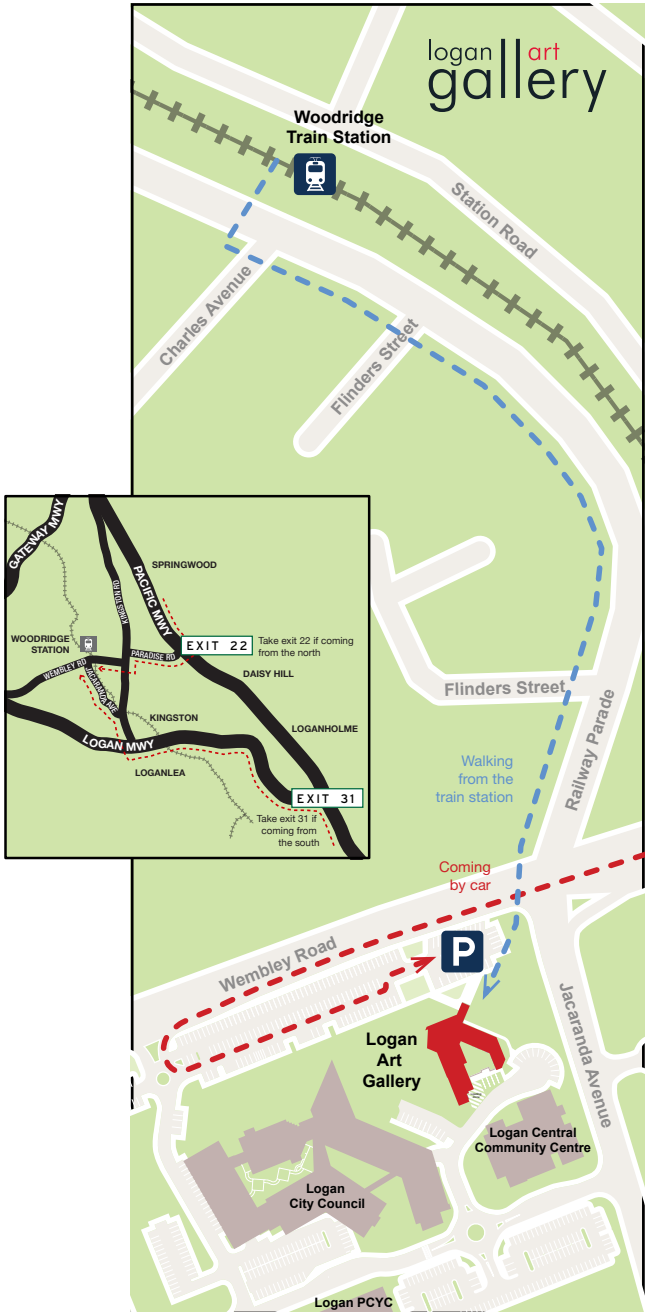
## **Momentum**

**CLINTON BARKER**

*Momentum* is an exhibition of recent paintings by Clinton Barker that explore the notion of all compounded forms being in a state of ongoing transitory existence.

Image: Clinton Barker, *Drifters*, 2015, oil on canvas

# GETTING THERE



## **Logan Art Gallery**

Cnr Wembley Rd and Jacaranda Ave  
Logan Central QLD 4114

**Open 10am to 5pm, Tuesday to  
Saturday Entry is free!**



**Cover images:** Euan Macleod, *Painting on Banks Peninsula* (Diptych), 2001–2002, oil paint on canvas, Logan Art Collection. From Logan Art Gallery 20th Anniversary exhibitions.

email: [artgallery@logan.qld.gov.au](mailto:artgallery@logan.qld.gov.au)  
web: [www.logan.qld.gov.au/artgallery](http://www.logan.qld.gov.au/artgallery)  
phone: (07) 3412 5519

