

2016 Exhibition Program



Welcome to Logan Art Gallery

Logan Art Gallery celebrates the diverse practices of visual artists, craft workers and designers and presents a dynamic exhibition program for residents and visitors to the region. Exhibitions feature touring exhibitions, local artists, visiting artists and works from the Logan Art Collection.

An extensive range of free public programs is offered and includes guided tours, practical workshops, special events and artist talks. A dedicated Young People's Gallery showcases exhibitions for young people or by young people and provides fun, interactive activities for younger visitors.

LOCATION

Logan Art Gallery is located on the corner of Wembley Road and Jacaranda Ave, Logan Central QLD 4114.

HOW TO FIND US

By train: Woodridge Station operates on the Beenleigh line and is approximately 500 metres from the gallery, via Railway Parade and Wembley Road.

By bus: There are several bus stops near the corner of Wembley Road and Jacaranda Avenue, which is close to the gallery. For full details on all scheduled bus and school transport services contact Trans Info on 13 12 30 or visit TransLink website www.translink.com.au

OPENING HOURS

Open 10 am to 5 pm Tuesday to Saturday.
Admission is free!

Logan Art Gallery will be closed to the public on the following days for the installation of new exhibitions and holiday periods:

- 2 January
- 19 January
- 26 January (Australia Day)
- 23 February
- 25 March (Good Friday)
- 26 March (Easter Saturday)
- 5 April
- 24 May
- 5 July
- 23 August
- 11 October
- 6 December
- 25 Dec 2016 to
2 January 2017

Exhibition and dates are correct at the time of printing. Logan Art Gallery reserves the right to amend the exhibition program.

PARKING

Free parking for cars and buses is available at the front of the gallery; entry to the car park is on Wembley Road.

VENUE HIRE

Logan Art Gallery, including its creative arts workshop, is available for private and community functions and events. For more information contact the gallery by phone on 07 3412 5519 or email artgallery@logan.qld.gov.au.

GALLERY STORE

Logan Art Gallery Store showcases unique and original art, craft and design works, all made by local artists.

GROUP BOOKINGS

Large groups are encouraged to call and inform us of their intended visit. Logan Art Gallery staff can provide free tours to interested groups booking in at least a week in advance of their visit, and groups can also book practical activities to further enhance their visit. To make a booking telephone (07) 3412 5519. For more information on exhibitions, programs, events and resources visit www.logan.qld.gov.au/artgallery.

CONTACT US

Phone: (07) 3412 5519

Email: artgallery@logan.qld.gov.au

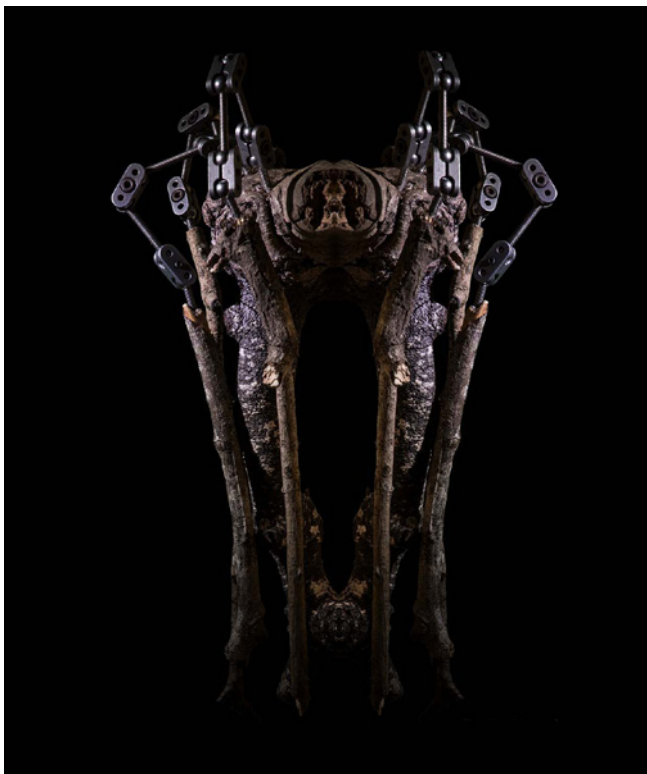
Fax: (07) 3412 5350

Website: www.logan.qld.gov.au/artgallery



Artwaves 2015 installation at Logan Art Gallery, 2015

22 JAN - 20 FEB



Uncanny nature

MERRI RANDELL AND CHRIS DENARO

In *Uncanny nature*, Merri Randell and Chris Denaro use animation and surreal photography to make us rethink what we understand about nature.

Image: Merri Randell, *The Fen-Pan14*, 2013, digital video

Image: Chris Denaro, *Nocturne #39*, 2015, high-definition video

22 JAN - 20 FEB



The patented field

ANDREA DE RIEN

Beenleigh artist Andrea de Rien has created a series of sculptures based on natural forms for *The patented field* to explore how genetic modification and private companies influence the world's food crops.

Image: Andrea de Rien, *Corn brief*, 2013, paper pulp, legal tape

22 JAN - 20 FEB



Material matters

KAY LAWRENCE

Kay Lawrence explores the relationship between nature and culture, and includes textiles and digital art as a metaphor for the old and the new.

Image: Kay Lawrence, *Arboreal discourse*, 2014, archival digital print on photorag paper

22 JAN - 20 FEB



Animation fixation

Showcasing a series of fun and quirky animations by tertiary students, on display in the Young Peoples Gallery.

Still image from *Oddbots* – an animation presented by Queensland University of Technology; Director Kate Muffet, producer Claudia Blackburne; Moon Ballon Studios

26 FEB - 2 APR



Scanlines

This major national survey exhibition *Scanlines*, from dLux MediaArts (NSW), is the first of its kind: a comprehensive group exhibition with an education focus that surveys the heritage of new media art in Australia since the 1980s. This project has been assisted by the Australian Government through the Australia Council for the Arts, its arts funding and advisory body.

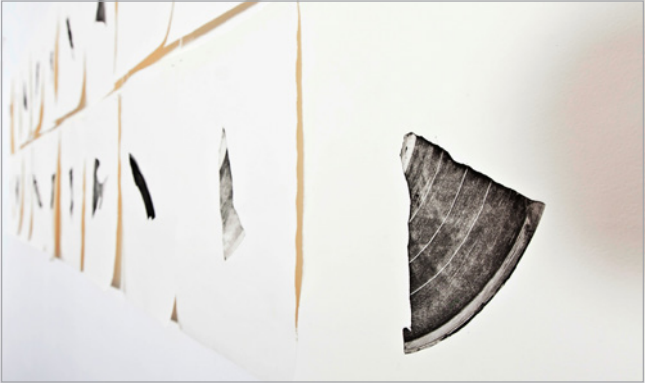
Image: SODA_JERK, *Hollywood burn*, 2011, digital video

SCANLINES.net

DLUX
MEDIA ARTS



26 FEB - 2 APR



Vinyl traces

PAUL EVES

Eagleby artist Paul Eves has been working with his old vinyl record collection, using them as plates to make prints. “The scratches, scrapes and marks that have devalued their function as ‘records’, have increased their function as personal records and act as archives that bear the evidence of the traces of time. ... I cherish these ‘wounds’ as the auditory scars of memory – they offer me an immediate recall of particular times, people and places from my past.”

Image: Paul Eves, *Vinyl traces* installation at The Hold gallery, Brisbane 2014

26 FEB - 2 APR



Workshop wonders XIV

A special selection of student works chosen from the Logan Art Gallery workshop program. This fourteenth annual exhibition highlights the gallery's workshop program which is an integral part of the visual arts education and cultural experience in the City of Logan.

8 APR - 21 MAY



eScapes

WAYNE BUDGE

Timed to coincide with the Queensland Festival of Photography throughout April, this exhibition by Tanah Merah artist, Wayne Budge, showcases his landscape photographs using the digital technique known as High Dynamic Range (HDR) photography. “By utilising camera settings and a little post production, an HDR image could be an extremely accurate image of what was taken, a stunningly surreal work of art, or something in between.”

Image: Wayne Budge, *Tree of life*, 2014, digital photograph

8 APR - 21 MAY



My Country, I Still Call Australia Home:

CONTEMPORARY ART FROM BLACK QUEENSLAND

Drawn from the Queensland Art Gallery's extensive collection, the exhibition examines the associations and interpretations Aboriginal and Torres Strait Islander artists have to country (land) and country (nation). Indigenous artists have long been an important voice for their communities and have been instrumental in telling Aboriginal and Torres Strait Islander stories – from presentation of alternative views of history, to asserting their presence over country, both urban and regional, and responding to contemporary politics and highlighting contemporary Indigenous experiences in Australia. A Queensland Art Gallery | Gallery of Modern Art touring exhibition.

Image: Michael Cook, QLD b.1968. *Bidjara people civilised #2*, 2012, inkjet print on paper, ed. 5/8. Purchased 2012. Queensland Art Gallery

QAGOMA
TOURING



Queensland
Government

The Queensland Art Gallery | Gallery of Modern Art provides a program of touring exhibitions and related services to regional Queensland.

8 APR - 21 MAY



Ripple effect: OUT OF ARTWAVES

A solo exhibition by one of the outstanding young artists who exhibited in *Artwaves 2015: Logan and adjacent areas secondary schools art exhibition*. Stephanie Crosby was awarded the opportunity to be mentored by Logan Art Gallery staff to develop and present an exhibition of her work in the Young Peoples Gallery.

Image: Stephanie Crosby, *Realising technology*, 2015, pen and ink on paper, resin, watch parts, laser cut MDF, Styrofoam, acrylic texture paste

27 MAY - 2 JUL



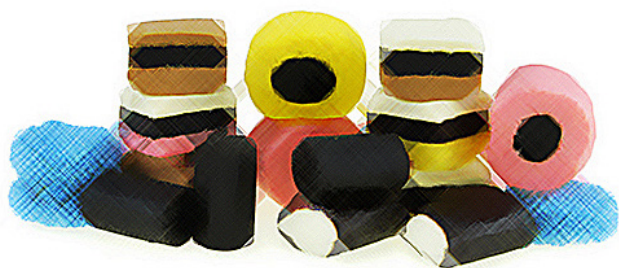
Finding home:

REFUGEE AND ASYLUM SEEKERS ART EXHIBITION

In partnership with the Refugee Association of Logan, this exhibition of art by recent refugees and asylum seekers reveals some of the complex and personal stories of journeys undertaken to find 'home'. The exhibition coincides with World Refugee Day which will be held on 20 June 2016.

Image: Sha Sarwari, *National icon*, 2014, digital photograph

27 MAY - 2 JUL



Allsorts:

NEW WORKS BY LOGAN ARTISTS

An exhibition of new work by artists currently living in the Logan area. Some artists are well known to the gallery's regular visitors and some will be exhibiting for the first time.

27 MAY - 2 JUL



Landmarks:

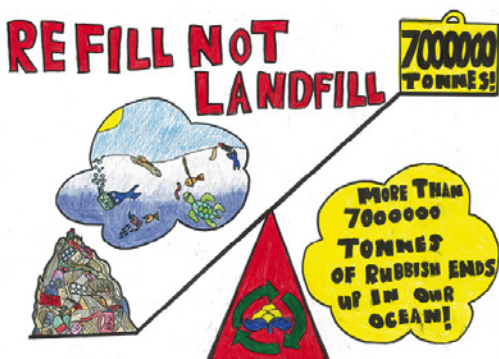
SHIBUKAWA AND LOGAN SISTER CITIES CHILDREN'S ART EXCHANGE EXHIBITION

A Logan Sister Cities exchange project between Logan and Shibukawa, Japan, in which students from both cities create artworks which are displayed in both cities. This year's theme is "best known and most loved landmarks of your city".

Image top: Monica Papa, Year 4, Edens Landing State School, *Pathway to lots*, watercolour pencils and felt pen on paper. From the *Shibukawa and Logan sister cities art exchange exhibition 2014*

Image bottom: Sekita Ami, Year 5, Toyoaki Elementary School, *Belly button festival (Heso Matsuri) - dancing together*, water colour paint on paper. From the *Shibukawa and Logan sister cities art exchange exhibition 2014*

27 MAY - 2 JUL



World Environment Day posters

World Environment Day posters brings together a collection of vibrant artworks designed by Logan's young artists. World Environment Day is an annual global event for positive environmental action. World Environment Day celebrations began in 1972 and have grown to become one of the main vehicles through which the United Nations stimulates worldwide awareness of the environment and encourages political attention and action.

Image: Tino Gallo, John Paul College, Grade 6. 2015 Mayor's Choice Winner



8 JUL - 20 AUG



George Virine: RUSSIAN MASTER SCULPTOR

A retrospective survey of work by sculptor George Virine who was born in Russia in 1920 and came to Australia in 1951. He was a highly influential teacher, first at Central Technical College, Brisbane and then at his own school at Kangaroo Point before eventually moving to Rochedale in 1988. From his home studio he continued to give private lessons until his retirement in 2014 just before his ninety-fifth birthday.

Image: George Virine, *Communism*, 1961, oil on plaster

8 JUL - 20 AUG



International Wildlife in Art 2016

QUEENSLAND WILDLIFE ARTISTS SOCIETY

The Queensland Wildlife Artists Society Inc. presents an exhibition of high quality paintings, pastel works, drawings and sculptures of wildlife. The society boasts international membership and raises funds for wildlife conservation.

Image: Gail Higgins, *Paperbark retreat*, 2014, acrylic on primed paper

Image: Janeen Fedrick, *Quiet Harmony*, 2015, acrylic on paper



8 JUL - 20 AUG



Meanwhile, in the woods

ORMEAU WOODS STATE HIGH SCHOOL

An exhibition from the students of Ormeau Woods State High School, *Meanwhile, in the woods* is an immersive installation of individually crafted soft toys called *Creechers*.

Image: Selection of *Creechers*, Grade 8, Ormeau Woods State High School

28 AUG - 8 OCT



**Artwaves 2016:
LOGAN AND ADJACENT
AREAS SECONDARY
SCHOOLS ART EXHIBITION**



Artwaves is an annual art exhibition of work sourced from the creative and talented high school students in the Logan region. *Artwaves* aims to demonstrate the wealth of imagination and creativity present in the city of Logan and adjacent areas.

Image: Jazzi Pybus, Year 12 Beenleigh State High School, *Dad*, 2015, acrylic on canvas, found objects and pen on paper



14 OCT - 3 DEC



Logan arts, craft and design treasure store

Highlighting the best of Logan's artists, craftworkers and designers. Perfect for all Christmas gift ideas.

Image: Logan Art Gallery Store 2015

14 OCT - 3 DEC



Bimblebox: ART - SCIENCE - NATURE

Bimblebox: art - science - nature is a touring exhibition partnered by Museums and Galleries Queensland and Redland Art Gallery in association with Bimblebox Nature Refuge. Curated by Beth Jackson from a project initiated by artist Jill Sampson, the exhibition is about the Bimblebox Nature Refuge, its environmental, social and scientific significance and an artist group's creative response to their experience of this unique and threatened environment. This project has been assisted by the Australian Government through the Australia Council, its arts funding and advisory body.

Image: Fiona MacDonald, *Alpha 1*, 2012, inkjet print on archival paper. Courtesy of the artist



9 DEC - 21 JAN 2017



Punuku Tjukurpa

Punuku Tjukurpa showcases works from the Maruku Arts archive at Mutitjulu near Uluru in the Northern Territory. It features *punu* (wooden artefacts and implements) and *walka* (patterned using hot wire) boards created by three generations of *Anangu*, central and western desert people from the Anangu Pitjantjatjara Yankunytjatjara (APY) Lands, Ngaatjatjarra Lands and Ngaanyatjarra Lands.

Punuku Tjukurpa is an Artback NT touring exhibition developed in partnership with Maruku Arts. This project has been assisted by the Australian Government through the Australia Council, its arts funding and advisory body.

Image: Jorna Newbery, *Mimpu*, c.2000, Muur-muurpa: bloodwood



MARUKU@ULURU



9 DEC - 21 JAN 2017



Rangoli

MADHU KHANNA

An exhibition of *Rangoli* by Daisy Hill artist Madhu Khanna. *Rangoli* is a traditional Indian artform using brightly coloured sand, coloured rice or flower petals to create beautiful decorative patterns.

Image: Artist Madhu Khanna, demonstrating sand Rangoli

9 DEC - 21 JAN 2017



Pa Kore Day: INDUSTRIAL TAPES AS CULTURAL TRADITIONS

This exhibition documents a series of workshops, conducted at various Logan City Council Libraries, by artist Vanghoua Anthony Vue with young members of Logan's Hmong community.

Image: Vanghoua Anthony Vue, *Paj Qhov Rais (Carina Heights)*, 2015, industrial tape on window

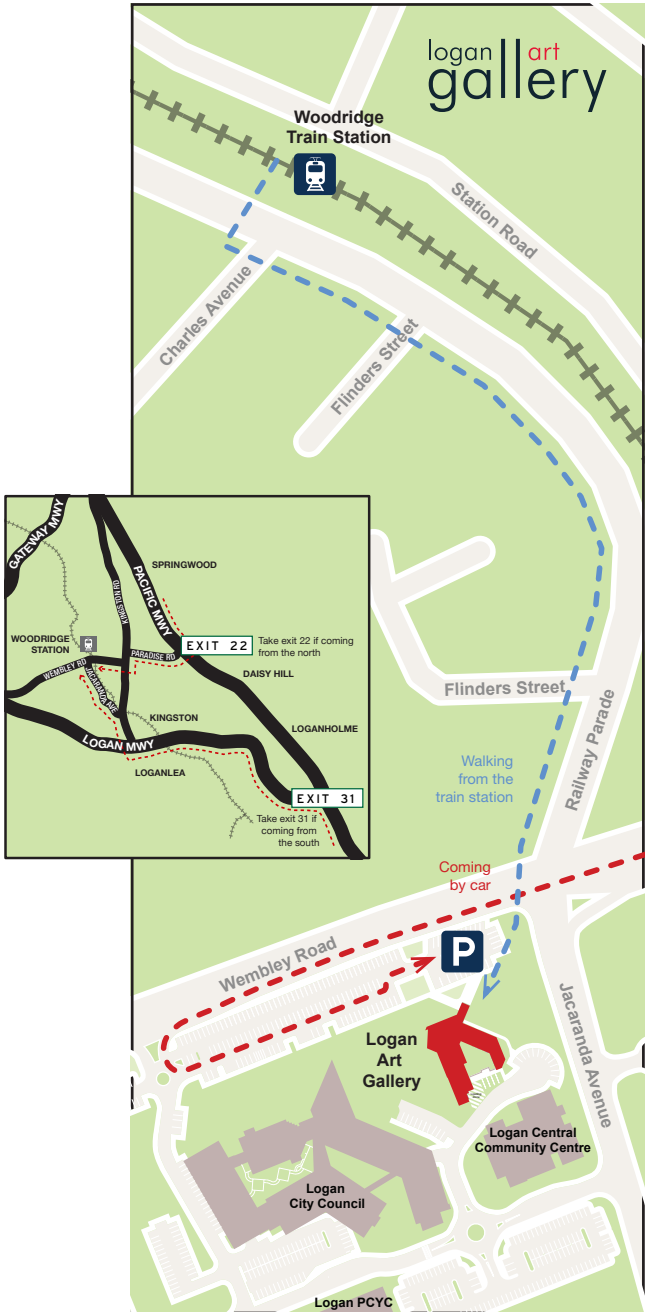
This exhibition is supported by the Regional Arts Development Fund, a Queensland Government through Arts Queensland and Logan City Council partnership to support local arts and culture.



Queensland
Government



GETTING THERE



Logan Art Gallery

Cnr Wembley Rd and Jacaranda Ave
Logan Central QLD 4114

**Open 10am to 5pm, Tuesday to
Saturday Entry is free!**



Cover and back page image: Andrea de Rien, *Red tape installation*, 2013, legal tape, thread, paper clay, glass, plastic, wheat. Image courtesy of the artist. From *The patented field* on display 22 January to 20 February 2016

email: artgallery@logan.qld.gov.au
web: www.logan.qld.gov.au/artgallery
phone: (07) 3412 5519

