

2018 Exhibition Program



Welcome to Logan Art Gallery

Logan Art Gallery celebrates the diverse practices of visual artists, craft workers and designers and presents a dynamic exhibition program for residents and visitors to the region. Exhibitions feature touring exhibitions, local artists, visiting artists and works from the Logan Art Collection.

An extensive range of free public programs is offered and includes guided tours, practical workshops, special events and artist talks. A dedicated Young People's Gallery showcases exhibitions for and by young people and provides fun, interactive activities for our younger visitors.

Location

Logan Art Gallery is located on the corner of Wembley Road and Jacaranda Avenue, Logan Central, Queensland.

How to find us

By train: Woodridge Station operates on the Beenleigh line and is approximately 500 metres from the gallery, via Railway Parade and Wembley Road.

By bus: There are several bus stops near the corner of Wembley Road and Jacaranda Avenue, which are close to the gallery. For full details on all scheduled bus and school transport services contact Trans Info on 13 12 30 or visit TransLink website translink.com.au

Opening hours

Open 10 am to 5 pm Tuesday to Saturday.
Admission is free!

Logan Art Gallery will be closed to the public on the following days for the installation of new exhibitions and holiday periods:

- 26 January (Australia Day)
- 30 January
- 13 March
- 30 March (Good Friday)
- 31 March (Easter Saturday)
- 25 April (Anzac Day)
- 1 May
- 12 June
- 24 July
- 4 September
- 16 October
- 27 November
- 25 Dec 2018 to 1 Jan 2019 (Reopening Wed 2 Jan)

Parking

Free parking for cars and buses is available at the front of the gallery. Entry to the car park is on Wembley Road.





Silent conversation exhibition at Logan Art Gallery by Sha Sawari, 2017

Venue hire

Logan Art Gallery, including its creative arts workshop, is available for private and community functions and events. For more information contact the gallery by phone on (07) 3412 5519 or email artgallery@logan.qld.gov.au.

Gallery Store

Logan Art Gallery Store showcases unique and original art, craft and design works, all made by local artists.

Group bookings

Large groups are encouraged to call and inform us of their intended visit. Logan Art Gallery staff can provide free tours to interested groups booking in at least a week in advance of their visit, and groups can also book practical activities to further enhance their visit. To make a booking telephone (07) 3412 5519. For more information on exhibitions, programs, events and resources visit www.logan.qld.gov.au/artgallery.

Contact us

Phone: (07) 3412 5519

Email: artgallery@logan.qld.gov.au

Website: logan.qld.gov.au/artgallery

Exhibitions and dates are correct at the time of printing. Logan Art Gallery reserves the right to amend the exhibition program.

Exhibition Program

UNITIL 27 JAN



Ponyland: The big pony show

This delightful exhibition features a fantastical collection of paintings, sculptures and works on paper which capture the grace and playfulness of the pony as its subject.

Image: Richard Blundell, *Expedition Stallion*, 2012, oil on linen

UNTIL 27 JAN



The Lady and the Unicorn

Featuring artworks by well-known Australian artist Arthur Boyd together with poems by poet Peter Porter. In 1973-74 Boyd and Porter collaborated to create an illustrated poetry book *The Lady and the Unicorn*. This exhibition displays the original etchings, poems and archival material from the development and creation of *The Lady and the Unicorn*.

Image: Arthur Boyd, *The Unicorn and the Ark*, 1973-1974, (detail) etching and aquatint

A Bundanon Trust touring exhibition. This exhibition is supported by the National Collecting Institutions Touring and Outreach Program, an Australian Government program aiming to improve access to the national collections for all Australians



Australian Government
National Collecting Institutions
Touring & Outreach Program

BUNDANON TRUST

UNTIL 27 JAN



The Method

MARK KLEINE

Local artist Mark Kleine uses performance and photography to explore the ways in which we construct our own identities.

Image: Mark Kleine, *Dorothea San*, 2016, found textiles on mannequin

2 FEB - 10 MAR



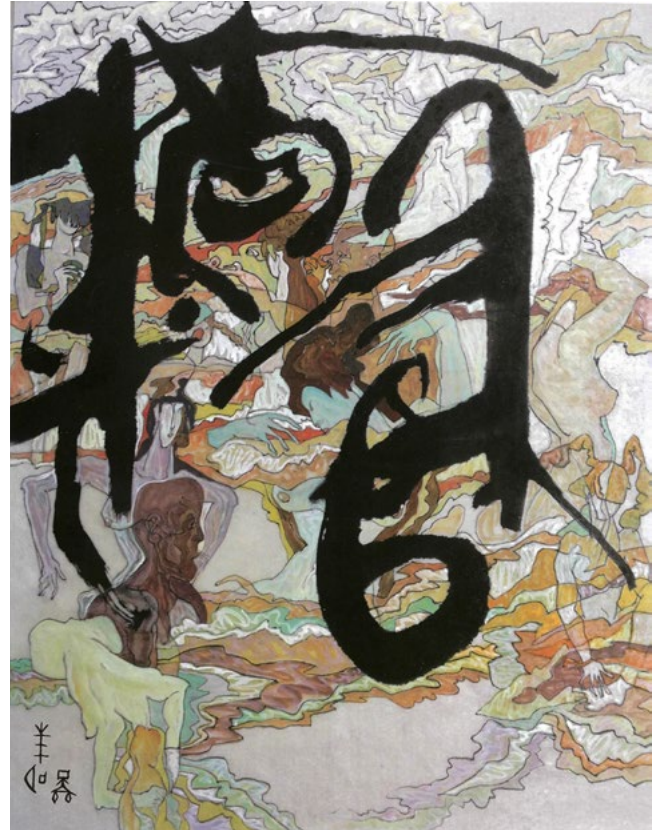
Family connections

REDEEMER LUTHERAN COLLEGE

An exhibition of graphite pencil portrait drawings by year 11 students from Redeemer Lutheran College.

Image: Rhiannon Power, Year 11, *Untitled*, 2017, graphite pencil on paper

2 FEB - 10 MAR



The first vestige of ancient China – The art of oracle

YUMING QIN

In 1899 oracle bones unearthed from the ruins of the Yin dynasty revealed some of the world's earliest written words. Artist Yuming Qin presents a series of abstract ink on paper works which respond to the found oracles of ancient China.

Image: Yuming Qin, *Homeward bound*, 2011, Chinese ink on paper

2 FEB - 10 MAR



Pure land

LEI XU

Pure land by Woodridge artist Lei Xu, is an exhibition of abstract oil paintings which explore the transformation of Modern China, from the Mao era to Chinese society today.

Image: Lei Xu, *South facing gate*, 2015, oil on canvas

Image: Lei Xu, *Summer*, 2016, (detail) oil on canvas

2 FEB - 10 MAR



Looking forward

ESTHER AUSTIN

Esther Austin describes her new body of work as 'looking at art from within'. In these semi-abstract paintings, Esther uses colour and tone to suggest spaces where the boundaries of inside and outside seem to merge and collapse.

Image: Esther Austin, *Portrait of a village*, 2016, oil on canvas

In dreams

ST FRANCIS COLLEGE

In dreams presents a series of paintings created by recently arrived Syrian refugee students from St Francis College, Crestmead. In this exhibition, the students have created works which interpret the concept of dreams, varying from hopes, aspirations, nightmares and memories.

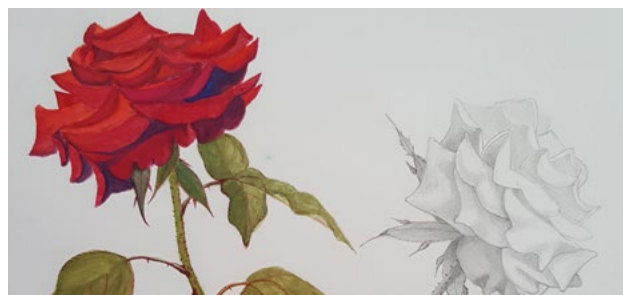


Queensland Wildlife Artists Society Inc:

INTERNATIONAL WILDLIFE IN ART 2018

The Queensland Wildlife Artists Society Inc. presents an exhibition of high quality paintings, pastel works, drawings and sculptures of wildlife. The Society boasts international membership and raises funds for wildlife conservation.

Image: Gail Higgins, *Melaleuca visitors (Pale-headed Rosellas)*, 2017, pastel on paper



In bloom:

MARK DAVEY, LARA GURNEY AND MARNIE LINGER

In this exhibition local artists Mark Davey, Lara Gurney and Marnie Linger present a series of artworks which capture the beauty of flora in the City of Logan.

Image: Lara Gurney, *Floral pattern*, 2015, acrylic on canvas

Image: Marnie Linger, *Black Magic roses in full bloom*, 2017, water colour and graphite on paper

Image: Mark Davey, *Poincianas #3*, 2014, acrylic and graphite on canvas

16 MAR - 28 APR



Workshop wonders XVI

A special selection of student works chosen from the Logan Art Gallery workshop program. This sixteenth annual exhibition highlights the gallery's workshop program which is an integral part of the visual arts education and cultural experience in the City of Logan.

Image: Kristy, *Self portrait*, 2017, acrylic paint on paper

4 MAY - 9 JUN



Piksa Niugini – New Guinea portraits and diaries

STEPHEN DUPONT

This touring exhibition by Australian photographer Stephen Dupont presents a series of photographic works created during his numerous trips to Papua New Guinea which span over a decade. In this exhibition, Dupont has documented the changing face of Papua New Guinea and powerful impact of globalisation on the fabric of its traditional Melanesian society.

Image: Stephen Dupont, *Sing-Sing, Mt Hagen, Papua New Guinea #23*, 2004, silver gelatin photograph



Small wonders and quirky connections

KRIS ESTREICH

In this exhibition, Bethania artist Kris Estreich uses assemblage and collage to fuse political and environmental commentary with humour and playfulness. Estreich's works also draw attention to the threatened habitat of koalas in Logan.

Image: Kris Estreich, *Urban Koalas: You plug in & I plug out*, 2017, acrylic, wood and found objects

Image: Kris Estreich, *Urban Koalas: Where are you?* 2017, acrylic, wood and found objects



World Environment Day posters

World Environment Day posters brings together a collection of vibrant artworks designed by Logan's young artists. World Environment Day is an annual global event for positive environmental action. World Environment Day celebrations began in 1972 and have grown to become one of the main vehicles through which the United Nations stimulates worldwide awareness of the environment and encourages political attention and action.

Image: Kali Groenewoud, *Connect to nature*, 2017, Woodhill State School, grade 6, Mayor's choice 2017





Envisage – unseen rhythms

RACHAEL LEE

Rochedale South artist Rachael Lee presents a series of collagraph prints in response to the uplifting impact Logan’s parklands has had upon the artist. This exhibition highlights rhythms of the seen and unseen in natural environments, creating a sense of place which goes beyond a literal depiction of the landscape itself.

Image: Rachael Lee, *Perception I and II*, 2017, charcoal, acrylic, ink and pencil on paper. Photography by Carl Warner

This project is supported by the Regional Arts Development Fund, a partnership between the Queensland Government and Logan City Council to support local arts and culture in regional Queensland.

Rachael Lee is supported by the Queensland Government through Arts Queensland.



Landscape to leave for future generations:

**SHIBUKAWA AND LOGAN SISTER CITIES
CHILDREN’S ART EXCHANGE EXHIBITION**

An art exchange project between the cities of Logan and Shibukawa, Japan, in which students from both cities create artworks based on a shared theme.

Image: Lee Meh, 9 years old, Woodridge Primary School, *Parrots in Logan*, 2017, pen and watercolour on paper; Pawpaw, 8 years old, Woodridge Primary School, *Blue flowers in Logan*, 2017, pen and watercolor on paper.

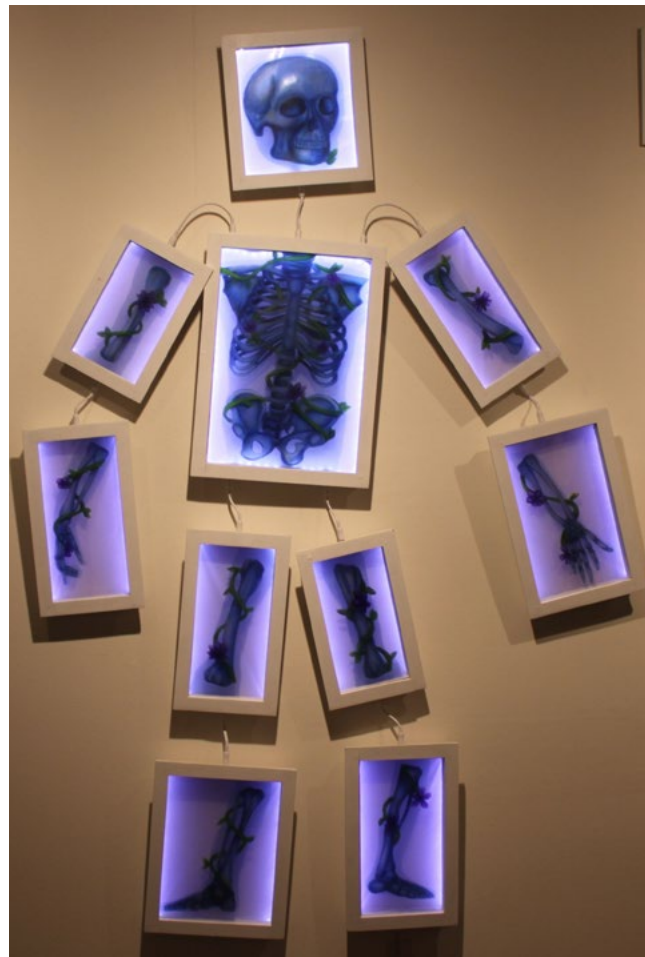


You can't shut me up. You can't shut me out

GABE WISCHKI

For local artist Gabe Wischki making art is a sensory experience. Being nonverbal, Gabe's art is a way for him to communicate and express himself. Drawn to earthy colours and tones, his art also connects him to his Aboriginal heritage.

Image: Gabe Wischki, *Untitled*, 2016, acrylic and collage on board



Ripple effect: OUT OF ARTWAVES

Each year Logan Art Gallery selects one of the outstanding young artists who exhibited in the annual *Artwaves: Logan and adjacent areas secondary schools art exhibition* to mentor in developing their own solo exhibition for the Young People's Gallery. This year we feature the work of Sarah Richards.

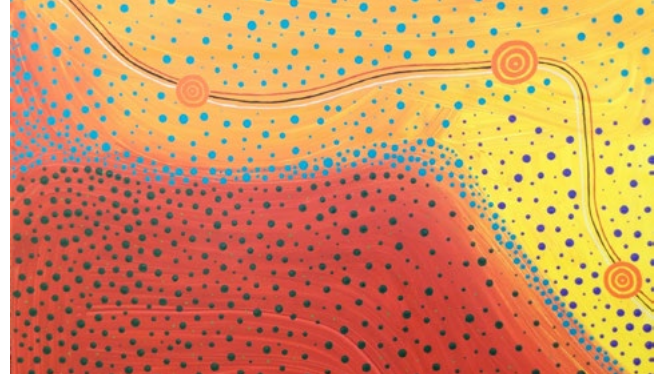
Image: Sarah Richards, *Fragments*, 2017, colour drawing transparencies with light boxes



As far as the eye can see

As far as the eye can see is an exhibition of works by prominent Australian printmakers investigating their local landscapes. It celebrates the breadth and depth of printmaking practice in Australia today and is a stunning reflection of Australia's unique and varied geography.

Image: Rochelle Summerfield, *Lost*, 2016, pigment print on archival paper



MOONKS: Deadly art and designs

COLLEEN SAM AND KEITH WERIBONE

MOONKS: deadly art and designs features Indigenous paintings and custom furniture by artist Colleen Sam and designer Keith Weribone. In 2016 the pair established MOONKS a custom design furniture business. MOONKS aims to create a new platform to share Aboriginal culture through contemporary design. The paintings created by Colleen Sam inform the designs which are printed onto custom furniture created by Keith Weribone.

Image: Colleen Sam, *Dingo dreaming*, 2017, acrylic on canvas

Image: Colleen Sam and Keith Weribone, *Plum dreaming design on shield shape ottoman*, (detail) 2017, digitally printed image on canvas drill

A Blue Mountains City Art Gallery Touring Exhibition.

This project has been assisted by the Australian Government's Visions of Australia program.

BLUE
MOUNTAINS
CULTURAL
CENTRE

BLUE
MOUNTAINS
CITY ART
GALLERY



Australian Government
Visions of Australia



The birds

CALAMVALE COMMUNITY COLLEGE

In this exhibition, students of Calamvale Community College have up-cycled materials to create their own unique bird sculptures. Students developed each bird to have its own character, trait and personality. *The birds* hopes to inspire visitors to use and appreciate items that are thrown away, and look for new ways to express their creativity.

Image: *Birds* by Calamvale Community College students, 2017

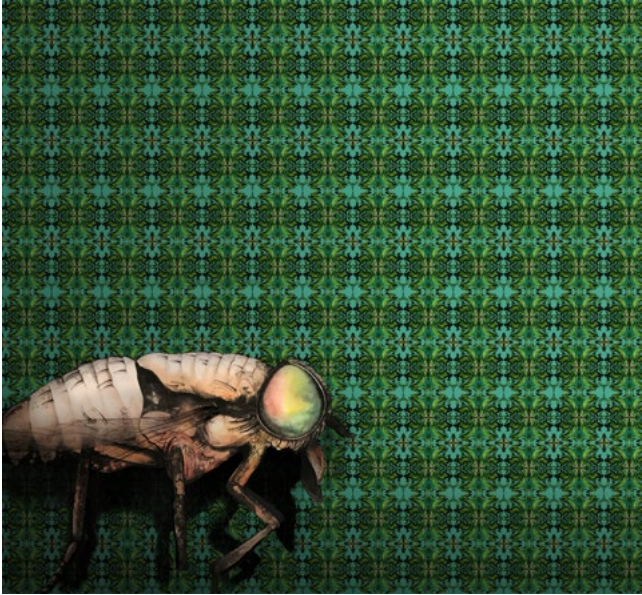


Artwaves 2018:

LOGAN AND ADJACENT AREAS SECONDARY SCHOOLS ART EXHIBITION

Artwaves is an annual art exhibition of work sourced from the creative and talented high school students in the Logan region. *Artwaves* aims to demonstrate the wealth of imagination and creativity present in the City of Logan and adjacent areas.

Image: Installation *Artwaves 2017: Logan and adjacent areas secondary schools art exhibition*



Zoonoses

NICOLA HOOPER

Through drawing and lithography Shailer Park artist Nicola Hooper uses fairy-tale iconology and rhymes to explore concepts surrounding ‘zoonoses’ (animal diseases that can infect humans). She explores how we perceive certain animals in the context of fear and disease.

Image: Nicola Hooper, *The giant horsefly*, 2018, digital print of hand coloured lithograph on paper and perspex, and *Rabbit fever zoonotic wallpaper* 2018, digital print of hand coloured lithograph.

This project is supported by the Regional Arts Development Fund, a partnership between the Queensland Government and Logan City Council to support local arts and culture in regional Queensland.



He kākano āhau (I am a seed)

This exhibition showcases contemporary artworks from local Māori artists and a large collaborative artwork made by Logan’s community. A person, like a seed is inextricably linked to generations who have gone and are yet to come. In the artists’ words; ‘although we are no longer living in New Zealand and have limited access to our cultural practices it does not mean that Māori are lost; we are still Māori and aim to awaken that very essence within all of us through the exhibition’.

E kore au e ngaro, he kākano i ruia mai i Rangiātea
(I will never be lost, for I am a seed sown in Rangiātea) –
from an ancient Māori proverb (whakataukī)

Image: Allen ‘Onesian’ Vili, *Te Iwa O Mata Ariki*, 2018, digitally manipulated image

The project is supported by the Regional Arts Development Fund, a partnership between the Queensland Government and Logan City Council to support local arts and culture in regional Queensland.

19 OCT - 24 NOV



From the front line: Logan Diggers' stories

Commemorating the centenary of the end of World War I, this exhibition juxtaposes lithographs from the series *Australia at war* by the Australian official war artist Will Dyson (1880-1938) with stories about local soldiers who fought in the campaigns depicted.

Australia at war was derived from Dyson's numerous drawings from the front, and have been kindly lent by Queensland Art Gallery, Gallery of Modern Art.

Image: Will Dyson (1880-1938) *The cooks near Villers-Bretonneux* (from *Australia at war* series) 1918, lithograph on paper. Collection Queensland Art Gallery, gift of the Government of the Commonwealth of Australia 1919

Woodridge State High School: My arrival

Students from Woodridge State High School's Intensive English School collaborated with artists Nancy Brown, Tara Flynn and Gillian Diggins to design, create and digitise artists' books, illustrating their arrival experiences as new Australians. Inspired by Shaun Tan's graphic novel *The arrival*, they have drawn, printed and animated their personal stories.

30 NOV - 12 JAN 2019



Safe Space contemporary sculpture

Safe Space is an exhibition of contemporary Australian sculpture concerned with space in both its physical and psychological sense. This touring exhibition aims to showcase and build demand for high-quality contemporary sculptural work by Australian artists to audiences nationally.

Safe Space contemporary sculpture is an initiative of Museums & Galleries Queensland developed in partnership with Logan Art Gallery and curated by Christine Morrow.

Image: Abdul-Rahman Abdullah, *The boy who couldn't sleep*, 2017, painted wood, buffalo horn. Image courtesy of the artist and Moore Contemporary.

This travelling exhibition is supported by the Visions regional touring program, an Australian Government program aiming to improve access to cultural material for all Australians; the Queensland Government through Arts Queensland; the Visual Arts and Craft Strategy, an initiative of the Australian, State and Territory governments; and assisted by the Australian Government through the Australia Council, its arts funding and advisory body.





Sampūrnatā: completeness

LEE FULLARTON

These large paintings, small prints and installation artworks are based on Lee FullARTon's experience as an artist in residence in New Delhi, India. For Lee, completeness is not an end point, it is about having all the necessary parts to be whole.

Image: Lee FullARTon, *Drishti: Seeing, viewing, believing*, 2015, ink, acrylic and pencil on MDF board

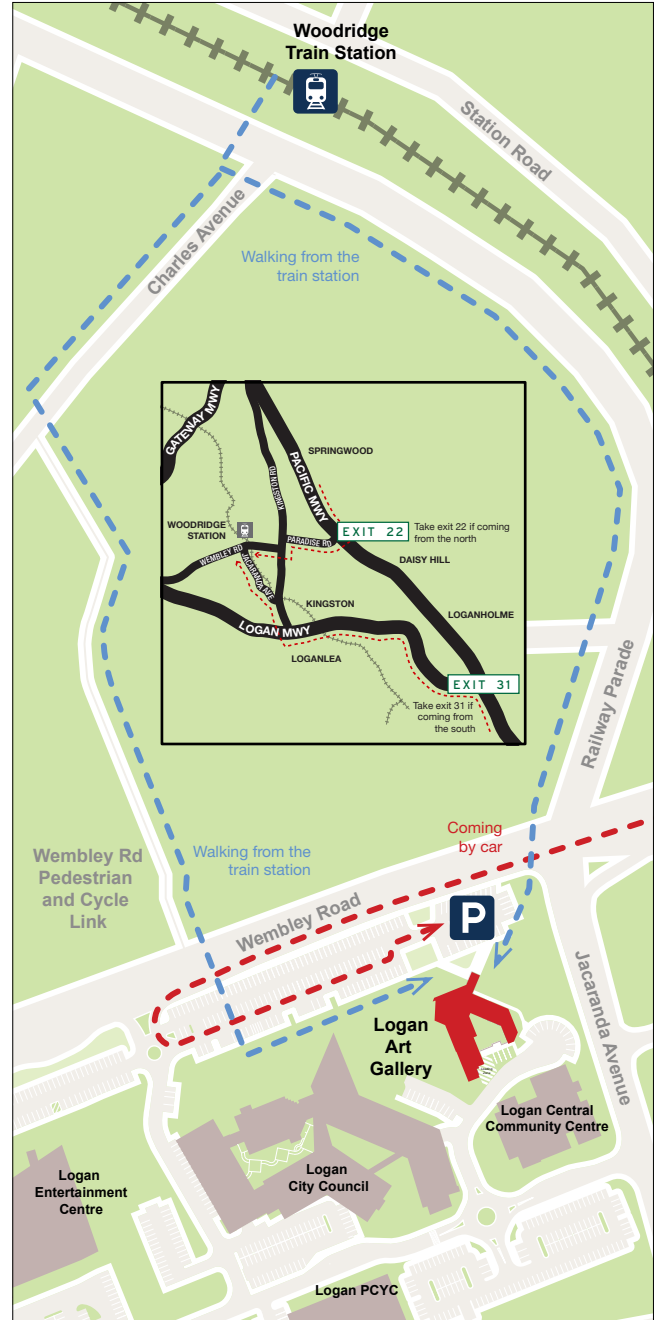
Image: Lee FullARTon, *Kahani: Story*, 2015, ink, acrylic and pencil on MDF board.
Photo: Sue Hammond



Logan treasures: art, craft and design pop-up store

Highlighting the best of Logan's artists, craftworkers and designers.

Image: Art, craft and design objects from the Logan Art Gallery Store



Logan Art Gallery

Cnr Wembley Rd and Jacaranda Ave, Logan Central QLD 4114

email: artgallery@logan.qld.gov.au

phone: (07) 3412 5519

web: logan.qld.gov.au/artgallery

Open 10am to 5pm, Tuesday to Saturday. Entry is free!



Cover and back page images:

Image: Lei Xu, *Summer*, 2016, oil on canvas. Image courtesy of the artist.

All content accurate as at September, 2018.

