



Logan Art  
COLLECTION



**Cover Image:** Lola Irvine, *Banksia Integrifolia* (detail)  
1999, oil on canvas, 600 x 500mm



## **Logan Art Collection**



## ***Selected works of the Logan Art Collection***

### **Acknowledgements**

The contribution of the following individuals to this publication is acknowledged with great appreciation:

Andrew Yeo and John Linkins for Photography of the Logan Art Collection works;

Heather Scott for graphic design;

Sylva Dostalíkova for word processing; and

Susan Conroy who completed research and copy of an earlier edition  
of the collection catalogue.

The production of the Logan Art Collection Catalogue was co-ordinated by Carolyn Johnson, Libraries and Cultural Services Manager, Annette Turner, Visual Arts Program Co-ordinator and Nadine Cameron, Art Gallery Assistant.

Logan Art Collection Catalogue 2007

ISBN 978-0-9750519-3-1

Logan Art Gallery

PO Box 3226 Logan City DC Queensland 4114

Cnr Jacaranda Ave & Wembley Road, Logan Central

Phone: (07) 3412 5519 Fax: (07) 3412 5350

Email: [artgallery@logan.qld.gov.au](mailto:artgallery@logan.qld.gov.au)

## Foreword

This catalogue presents selected works of the Logan Art Collection, bringing together artists from Logan, Queensland and across Australia. The collection essentially aims to be reflective of the time in which we live. Works celebrate the creativity of Australia's artists and explore what could be described as the 'spirit' of Logan City and the diversity of its residents.

Historically the Logan Art Collection arose out of the Logan Art Award which commenced in 1988. A number of works featured in the collection were acquired through the Award during its ten year history. The first Logan Art Award was held in conjunction with the John Paul College Art Exhibition. Subsequent events were held at the Kingston Butter Factory Community Arts Centre until the establishment of the Logan Art Gallery in 1995.

The Logan Art Award attracted significant works of art to Logan City and played an important role in facilitating cultural development in the local community. It enabled the highest quality contemporary art works to be selected for acquisition in the development of the Logan Art Collection.

The acquisitive award was open to artists Australia wide and artists were encouraged to submit entries in the categories of Paintings, Works on Paper and Sculpture.

Today, the Logan Art Collection features an increasing range of paintings, works on paper, photographs, ceramics, mixed media works and sculptures. The collection incorporates the *Logan, A Sense of Place Collection* which specifically seeks to reflect aspects of Logan City's physical and social environment. Works featured in the *Logan, A Sense of Place Collection* bring together various artists' ideas and impressions about the Logan area and what it is like to live in the city. The collection describes and discusses the community and the different ways it can be seen and experienced.

In recent times, works for the Logan Art Collection are acquired through Logan City Council's Art Collection Policy. Suitable works are selected from exhibitions held at the Logan Art Gallery, from studios of local artists and via gifts and bequests through the Commonwealth's Cultural Gifts Program.

The Logan Art Collection plays an important role in assisting the local community to explore ideas and stories of Logan City's recent past, while illuminating the vibrant present and encouraging the region's individuals to imagine their futures.

# Esther Austin

## *Daisy Hill*

1993, oil on canvas  
850 x 1010mm

Esther Austin's *Daisy Hill* records a view of this appealing Logan City location, detailing the landscape complete with its domestic built environment, as experienced by the local artist in the early 1990s. The site was of particular interest to Austin as at the time the artist was considering moving there. The fondness held for Daisy Hill can almost be felt in the warm colours used to depict the welcoming homes, while the cool green of the hill appears as an oasis against the dry foreground of surrounding grasslands.

Austin is known for her fascination with the landscape and is particularly adept at capturing the subtle play of light as it caresses rock formations, trees and bodies of water alike. Other landscapes by the artist held in the Logan Art Collection include *Bush Fire in Wembley Road* and *View from Tanah Merah*.

Austin has a long career in the visual arts commencing her studies at the East Sydney Technical College in 1945. She has been a member of the Royal Queensland Art Society since 1967 and a member of the prestigious Half Dozen Group of Artists since 1992. Exhibiting in many group exhibitions across Queensland and several solo exhibitions in Brisbane, Logan and Port Moresby, Austin's works are held in both private and public collections.



# Jill Barker

## ***Waists (Pearl)***

1994, painted polyurethane foam  
330 x 300 x 105mm each (4 units)

The four units are constructed from polyurethane foam and are designed to be mounted on a smooth, white wall, so that light reflected from the fluorescent paint on the back of each panel illuminates the wall. Surface texture and shape are Barker's dominant concerns in the work. The four units and the spaces between them, reflect the position of the waist as a kind of 'non-area' between the more usually recognised erogenous zones, while the total arrangement alludes to the composition associated with more traditional paintings.

From 1990 to 2006, Jill Barker lectured full-time at the Queensland University of Technology. She has received several Arts Queensland Grants as well as an Australia Council Residency at the Barcelona Studio. Jill Barker has held numerous solo exhibitions including *The Sonada Project* at University Art Museum (University of Queensland) in 2006. She obtained her Master of Arts (Humanities) from Griffith University in 1994, a Bachelor of Arts (Visual Arts) Degree with Distinction from Curtin University in 1988 and a Bachelor of Science Degree from the University of Queensland in 1972.

### Bibliography

Daniel Mafe, *Mourning Practice*, Eyeline no. 38, Summer 1998/99; Jill Barker & Gillian Swanson, *Stock Still & Sweet Little Girl*, Exhibition Catalogue, 1995; Susan Osting & Jill Barker: *Sweet Little Girl*, Exhibition Review, Eyeline, no.25, Spring 1994, p.47.





# Lyell Bary

## ***My Mother's Blanket***

1997, acrylic on plywood  
1800 x 1200mm

The combination of the size, title and textile markings of *My Mother's Blanket* prompt the viewer to expect the blanket to fall from the wall and envelop, cosset and comfort. Although on plywood, the title of the work and the painted pattern negates the underlying hard surface. The title and painted surface are in contradiction to the hardness of the timber beneath, softening and coaxing the timber into a seemingly other form. This plywood surface still shows through though, lending itself to the work as a seventh colour, fusing both support and surface application as one.

Unlike other works Bary has produced, where he has acknowledged and integrated the very form of the woodgrain in the pattern of the painting, *My Mother's Blanket* strays from this practice. The strength of the idyllic notion of 'Mother's blanket' and all these words cannot override the need of the artist to reach to the readymade grains in the timber for reference.

Lyell Bary was born in Picton, New Zealand, in 1960 and came to Australia in 1981. Relatively late to begin his career as an artist Bary first exhibited in 1993. He is intrigued by ordinary, everyday objects and materials, the way their uses change over time and the histories such objects accumulate. Influenced by the work of American artist Robert Indiana, Lyell Bary's work often uses text and abstract images from popular culture sources. His work has a strong conceptual framework and is characteristically minimalist.

### Bibliography

Rex Butler, *Blow Up for the exhibition Every Little Detail*, catalogue essay, Experimental Art Foundation, Adelaide, 1997;  
David Broker, *Assenting the Ludicrous*, review of the exhibition 535001-536000 Broadsheet, CACSA, 1997.



# **Erik Berg**

## **Mayes Cottage**

1996, oil on canvas board  
590 x 900mm

For Erik Berg, this old cottage is not a site for pleasant contemplation, for the 'speed society' has moved from rough-hewn cabins to skyscrapers. Rather, the artist encourages reflection upon the commercial objectives gained at the expense of an earlier society bred on fortitude and endurance. A society which did not encourage financial improvement to the detriment of education. Berg paints his subjects with an unadorned directness revealing his desire to document and record the changing face of his surroundings and his concerns about the unthinking nature of development.

Born in Denmark in 1931, Erik Berg came to Australia in 1969 and settled in Brisbane within an area which is now known as Logan City. Entirely self-taught, painting and the promotion of artistic endeavour have been the artist's hobbies since childhood. Since retirement, he has been able to dedicate himself more seriously to these interests. His work is held in several school and local government collections.





# Richard Blundell

Responding to the degradation of the natural landscape around him, Blundell uses the power of aesthetics to evoke passion for the natural environment in the viewer.

Blundell suggests these works are part of a body of work that is “a working hypothesis about the role of artistic production and aesthetics in the formation of place, the development of cultural capital and in establishing eco-culture.” He goes on to express that “the likely influence of aesthetics over social, political or economic decisions seems frail, improbable or even foolish. On the other, the role of aesthetic experience and cultural memory in the formation of identity seems very powerful.” (Blundell p 3.)

Like so many Australian artists Blundell’s works are a contemporary recording of the landscape surrounding him. The viewer can envisage Blundell placing colour on the canvas, transferring the image from eye to canvas, documenting the sheen or shimmer of light or the dark shadows from the view in front of him.

These works are an important document and reaction to the rapid depletion of local forest and the encroachment of suburbia. The proportions of the canvasses are suggestive of Blundell’s awareness of the remnants of bushland. The slivers of canvas heighten the viewer’s awareness of the vulnerability of the ever diminishing natural landscape.

A prolific painter, Richard Blundell is Deputy Director at Queensland College of Art (Gold Coast and Logan) and has exhibited at various Queensland galleries and also galleries in New South Wales, Victoria and Vietnam.

## Bibliography

*Attunement: Painting, Nature and Australian suburbia*, Logan Art Gallery: Ecology of Place Catalogue, March 2006; Artist’s Statement, Logan Art Gallery - Ecology of Place Catalogue, March 2006.

## ***Dark Forest II: Daisy Hill***

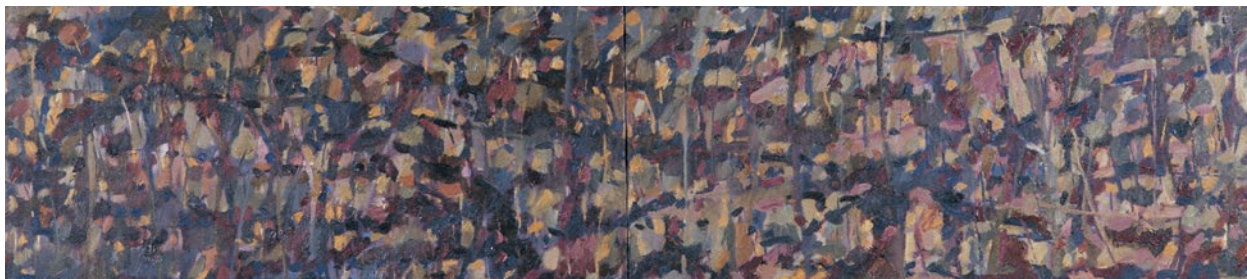
2006, oil on canvas 365 x 1500mm

## ***Ridgeline II: Daisy Hill***

2006, oil on canvas 365 x 1500mm

## ***Distance: Daisy Hill***

2006, oil on canvas 365 x 1500mm



# Joanna Burgler

## ***Car Body (International 1940)***

1991, oil on canvas  
1220 x 1550mm

For Joanna Burgler, the transformation of the rigid geometric shapes of the industrial world by nature's chaotic patterning, encourages contemplation and exploration of the complex relationship between man and nature. In *Car Body (International 1940)*, the entire front section of the car is being corroded by rust, marking the surface with abstract shapes in ochre and red. Weeds and tendrils grow around and within the car, while distorted images of ourselves and our environment are reflected back to us in the headlights and chrome bumper-bar. The incorporation of the viewer into the work in this way implies that the old vehicle has an integrity of its own, full of memories and nostalgia.

Born in Canberra in 1955, Joanna Burgler has exhibited widely in Byron Bay, having settled in the area after obtaining her Diploma of Art (Painting) in 1979 from the Alexander Mackie College of Advanced Education in Sydney. She has travelled widely throughout India, Nepal and Switzerland.

### Bibliography

Elizabeth Stuart, *Women Artists*, Port Melbourne, Vic. Lothian, 1993; Nevill Drury (ed.), *New Art Eight, Profiles in Contemporary Australian Art*, Craftsman House, 1993; Max Germaine, *Women Artists of Australia*, Craftsman House, 1991.





# **Max Daneels**

## ***Flagellation, Crucifixion and Deposition (triptych)***

1992, oil on masonite  
1000 x 640mm each

Referencing biblical scenes of the flagellation, crucifixion and deposition of Christ this triptych, by Belgium born artist Max Daneels, is in a style reflective of his oeuvre. The strong, simple lines frame blocks of colour and the linear movement continuously draws the eye over the image. The paintings are dark yet light simultaneously, perhaps reflective of the subject matter which is despair and sorrow but ultimately, for believers of the biblical story, the bringer of joyous redemption. In each image Daneels' deft hand captures a transcendental light escaping from the darkness, with Christ enveloped in shining white heralding what is to come.

A self taught artist, Daneels spent much of his early life living in various parts of Europe and began exhibiting regularly in Belgium and France from the 1950s onwards. Moving to Australia in 1980 Daneels exhibited in various venues around Brisbane and displayed a major survey exhibition at Logan Art Gallery in 1998. He later embarked on the ambitious project to create 39 works named *Peregrinations Through the Twentieth Century* documenting figures and events which he believed significant to the period.



# **Elizabeth Duguid**

## ***Hunchy Landscape***

1991, pastel on paper  
785 x 1300mm

**This spontaneous landscape by Elizabeth Duguid depicts the pineapple farms at Hunchy in the Sunshine Coast hinterland. Residing in the area, Duguid has embraced the local landscape recording it with her decisive application of colour which she advocates is the essence of her work. The rhythmic movement of this work with its languishing colours is reminiscent of much of her life.**

**Duguid suggests she finds “the ever changing subtleties of colour in nature fascinating - the way the colour changes with the time of day, after rain, after fire. The same subject can be an ever changing story.”**

**Born in Sydney in 1941, Duguid studied art at the Tasmanian College of Art and moved to the Sunshine Coast in 1991. Duguid has been the recipient of many awards and prizes throughout her career and her work is held in both public and private collections.**

### **Bibliography**

*Canvassing Colour*, Logan Art Gallery: *Canvassing Colour*: Elizabeth Duguid, March 1995.





# **Guy Gilmour**

## ***Geraldine's World***

**1996, acrylic on canvas  
1520 x 1120mm**

**A woman tending her vegetable patch; a man hanging out the washing; a cat on a table with the produce from the garden. All are part of the everyday routine for most people, but here they take on an almost surreal aspect. The hyper-realist technique adopted by Gilmour mimics and exaggerates photography's ability to record an image in perfect focus; an effect augmented by the use of sharp edges and a palette of high-key, richly saturated colour. The eye is disturbed by this all-over clarity of vision: only able to focus on one area of the work at a time, the viewer becomes disoriented and this everyday scene is suddenly made to seem foreign.**

**Guy Gilmour was born in Sydney in 1953, graduating with a Bachelor of Arts (Visual Arts) from the City Art Institute, Sydney in 1985. He has exhibited with Robin Gibson Gallery, Sydney as well as with Cintra Galleries, Brisbane. The winner of several regional art prizes, his work is held in collections throughout Australia.**



# Hollie

## ***Tree Skin, Tree Heart***

1994, oil on plywood  
1800 x 1080mm

The densely textured, gnarled surface of the timber in Hollie's *Tree Skin, Tree Heart* forms the perfect foundation for the complex, vibrant application of colour which seems to cause the surface of the work to shimmer and pulsate. The effect is achieved by the juxtaposition of brilliant colours, as well as by the manner in which they are applied: sometimes in broad slashes of paint, but more usually in small dots, which strongly refer to the techniques of the Pointillists; specifically, the French artists Paul Signac and Georges Seurat.

Yet Hollie's acknowledgement of her European artistic heritage does not deny the influence of her local Brisbane area. In the words of Peter Cripps, former Director of the Institute of Modern Art Brisbane, her individualism is of an expressionist, colourist variety "you wouldn't fit anywhere else". In fact, it seems rather that Hollie is driven to express an intensely felt personal spirituality and the techniques and media she adopts are all with the intention of exploring, in the words of Urszula Szulakowska, "her psychological and spiritual life in relation both to nature, as well as to those traditions which symbolise the connection of psyche to earth and cosmos".

Born in Brisbane in 1958, Hollie has exhibited widely throughout her local region and interstate. She was the 1990 *Moet & Chandon Fellow* and was commissioned in 1994/1995 to produce ten works for the Brisbane International Airport. Her works are held in the collections of the Australian National Gallery, Canberra, the Queensland Art Gallery, and Brisbane City Gallery and by Moet & Chandon, Epernay, France.

### Bibliography

Hollie, MOCA Bulletin, no.29, March 1990; Hollie Leads Field in Moet & Chandon, Courier Mail, 26 February 1990, p.22; Moet & Chandon Australian Art Foundation Touring Exhibition Catalogue, 1990; George Petelin, "A Material Horoscope for Hollie and Moet", Eyeline, no.8, March 1989, pp. 10-11; Urszula Szulakowska, "Hollie", in Contemporary Australian Art to China 1988-89, Catalogue; Kate Collins, "Seeing Stars?", Sunday Mail, 13 November, 1988; Bronwyn Larner & Fran Considine, *A Complementary Caste: A Homage to Women Artists in Queensland, Past and Present*, The Centre Gallery, Surfers Paradise, 1988.





# **Reginald Knox**

## ***Scrubby Creek***

1997, oil on canvas  
1520 x 1220mm

A sense of almost mystic peace pervades this canvas by well-known local Indigenous artist Reginald Knox. Despite being located among the bustling suburban centres of Logan, the creek nevertheless still exerts a powerful sense of timelessness and calm. In fact, the scene is almost prehistoric: heavy vines intersect in the forefront of the canvas, while ancient trees and mist-covered pools are all depicted in fine detail. Yet while encouraging us to reflect on the past, the beauty is still readily accessible in our own time and area and is made the focus of this work.

Reginald Knox was born in Goondiwindi, Queensland, in 1934, a member of the Kamiliroi tribe. One of nine children, he was raised at Toomelah Mission at Boggabilla, where he excelled in art from an early age. Upon leaving school, the artist worked as a ring-barker and fencer, travelling throughout Queensland and New South Wales. He entered the Toowoomba Art Exhibition in 1968 where he won first prize, the Brisbane Bicentennial Art Exhibition in 1970 in which he won both first and second prize and was the recipient in 1983 of a Fellowship Grant through the Australian Arts Board. He presented an exhibition at the Queensland University Anthropology Museum in 1990, which related to the Brisbane and Turrbal Aborigines who once occupied the area. His work has also been displayed at the Queensland Art Gallery, the Brisbane City Hall and the Brisbane Entertainment Centre. He currently teaches Aboriginal art and culture in schools throughout Queensland.



# Sally Morgan

## **Sunset**

1990, screenprint on paper  
640 x 940mm

The strongly visual and oral nature of Aboriginal culture, provides Sally Morgan with a rich heritage upon which to draw for her artistic works. Throughout the artist's life, a strong desire to communicate issues and beliefs which have been central to Aboriginal peoples for thousands of years is apparent; her works in effect construct a link between two cultures, making in the words of one curator, "Aboriginal expression comprehensible to people who haven't made an intense study of it."

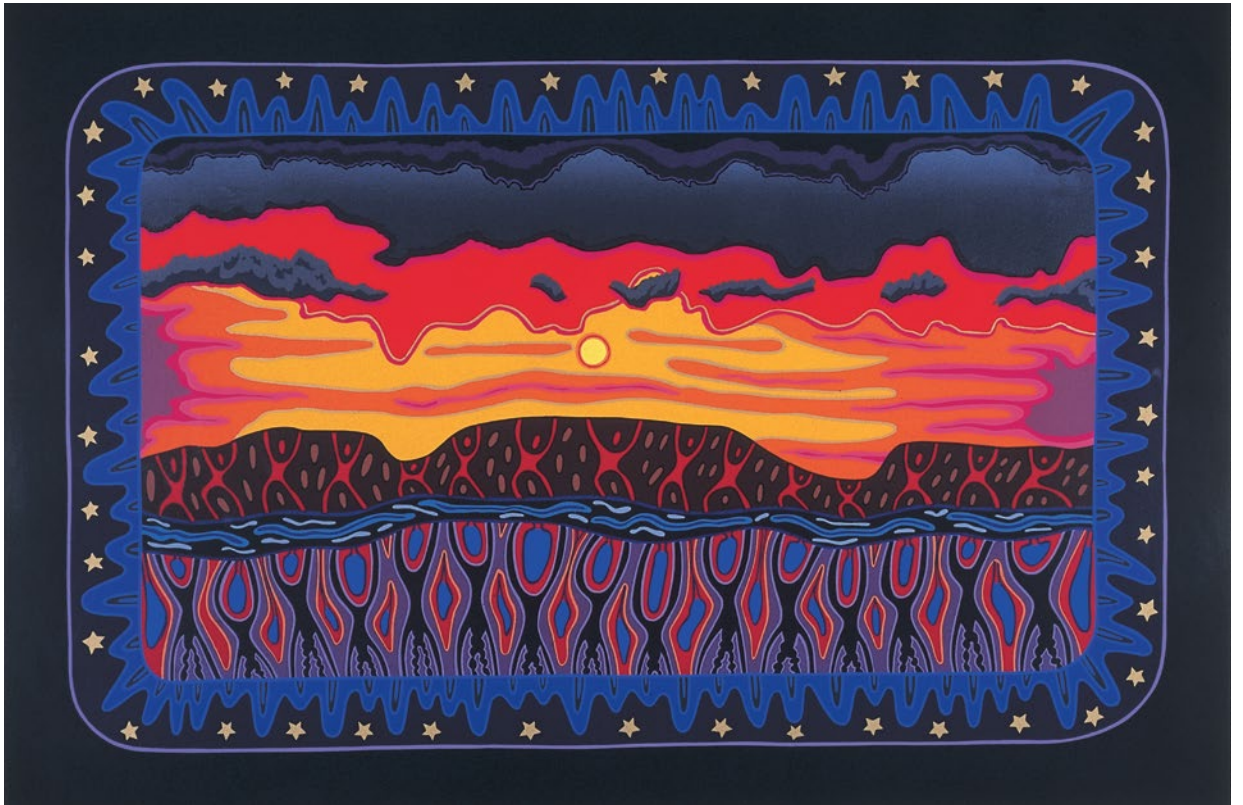
In *Sunset*, Morgan reflects the grandeur of an outback sunset with its vivid reds, ochres, yellows and blues, yet at the same time displaying the essential harmony between the people and the earth they inhabit; the human forms seem to support and define the mountains behind which the sun is setting. The whole scene is unified by a vivid band of blue and encircled by small white stars. For Morgan, "Issues of conservation and environment have gone beyond questions about the quality of life we are creating for ourselves. They have become questions of survival."

As a child, Sally Morgan had drawn almost obsessively before being criticised by teachers once too often for the style she had developed. It was only after meeting a distant relative many years later that she recognised in her early works the distinctive marks of an Aboriginal style and found the confidence to focus again on visual art. Morgan is the author of *My Place*, an acclaimed autobiography detailing her quest for identity and the discovery of her aboriginality, as well as *Wanamurraganya: The Story of Jack McPhee*.

### Bibliography

Tjalaminu Mia, *Daughters of the Dreaming: Sisters Together Strong*, Art Gallery of Western Australia, Exhibition Catalogue, 1997; Nikki Barrowclough, "For All of Us", Good Weekend Sydney Morning Herald, 12 October 1996, p.25; Sonia Barrow "Universal Appeal in Icons of Aboriginal Identity", Canberra Times, 7 April 1989; Avril Quail, *A Koori Perspective Australian Perspectives 1989 Catalogue*, Art Gallery of New South Wales, 1989; Jennifer Isaacs, *Aboriginality: Contemporary Aboriginal Paintings and Prints*, University of Queensland Press, 1989.







# Rodney Spooner

## ***Another View***

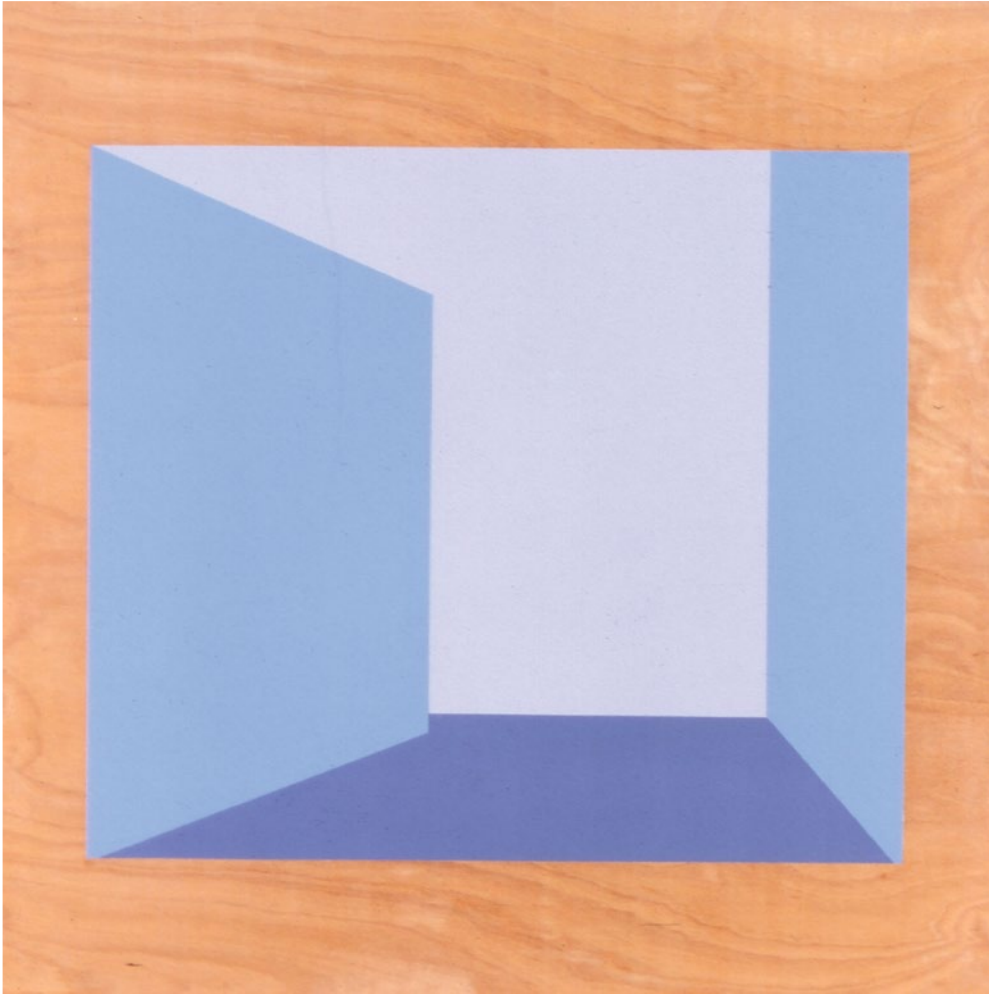
1995, synthetic polymer paint on plywood  
1200 x 1200 x 100mm

In Rodney Spooner's *Another View*, the idea of space and the ability of art to make us reassess our surroundings is under consideration. What looks initially like a partitioned room constructed with walls at ninety degree angles, on closer inspection becomes less stable: the left hand 'wall' seems to shift closer to the edge at the top of the painting than at the bottom. Geometry therefore does not re-create or accurately define the space, but operates to remind the viewer that this is, after all, a construct: a work created by the artist, in the words of Robyn Daw, so that "the clean lines and sharp edges simultaneously define and camouflage the systems that uphold each other, the image and its housing."

Rodney Spooner has been widely awarded, particularly for his installation works, including being named overall winner of the 1993 Churchie Exhibition of Emerging Art, the Gold Coast City Art Prize, the City of Hobart Art Prize and an Arts Queensland Project Grant. He is represented in the collections of the Museum of Contemporary Art, Sydney, the Queensland Art Gallery and the Queensland University of Technology Art Collection, as well as in the collections of the Federal and Family Courts in Brisbane. He has exhibited at David Pestorius Gallery, Brisbane, the Institute of Modern Art in Brisbane, with Selenium Sydney and with the University of Southern Queensland, Toowoomba.

### Bibliography

Rex Butler, "Rodney Cut a Hole", *Eyeline*, 1996; Rex Butler, "Ruins in Concrete", *Art + Text*, Vol. 48, p.34; Benjamin Genocchio, 'Another Room', *Eyeline*, Vol. 30, Autumn/Winter 1996, pp. 14-15; Clare Williamson, *The Object of Existence*, Exhibition Catalogue, Australian Centre for Contemporary Art, South Yarra, 1995; Michelle Helmrigh, *Out of Exile and Into the 90s, An Exotic Otherness Crossing Brisbane Lines*, CAST, 1994.



# Christopher Trotter

## ***Domestic Noisy Mynah***

1997, recycled metal, machine parts,  
motor mower body and handle  
840 x 420 x 1350mm

For Christopher Trotter, scrap metal and industrial discards form the basis of distinctive and evocative works. The artist has carefully selected and composed the materials to endow the work with its own 'personality', while promoting the concept of recycling materials to achieve creative solutions to problems of renewability of resources. In this case, the old Victa mower symbolises the typical suburban backyard and, like a real mower, the handle turns, causing the noisy mynah birds perched on the handle and the motor to chirp and fly around.

The artist examines the classic Australian culture of 'making do', in a whimsical, creative and entertaining way, encouraging the viewer's interaction with the work. *Domestic Noisy Mynah* won the People's Choice prize in the Logan Art Award, 1997.

### Bibliography

Gail Heathwood, "Showcase", The Weekend Australian Magazine, 26-27 March 1994, pp.26-7; Exhibition Catalogue, Christopher Trotter, Cintra Galleries, Brisbane, 1993; "Artist Chris Sculpts a Scrap-Heap Skippy", Courier Mail, 26 November 1992, p.7.



# Chris Worfold

## ***The Red Cedar Studio***

2002, oil on mixed  
media on board  
(diptych, 2 panels) A & B:  
1630 x 1220mm each

Surrounded by trees in the rural region of Cedar Vale is the artist's idyllic studio, the subject of this work. *The Red Cedar Studio* features a jumbled series of objects from everyday life, a favoured subject of the artist. However in this large-scale painting, elements of movement and time are suspended, creating an enchanting scene. An artist's inspection from close up and from afar is juxtaposed akin to the way that Worfold sees the world.

The strong natural light of the outside environment directly illuminates the studio space highlighting key items such as the Mother-In-Law's Tongue by the door, a metaphoric plant offering many symbolic interpretations to the viewer.

In *The Red Cedar Studio* Worfold incorporates actual objects from the domestic environment working over them with oils until they meld into the image laid over the undulating surface. The combination of subject and inclusion of personal items gives this work a quiet intimacy.

Chris Worfold graduated from the Queensland College of Art with a Bachelor of Visual Arts in 1992. He obtained a Graduate Diploma of Education in 1993 and Honours with his Bachelor of Visual Arts from the Queensland University of Technology in 1994. He has held solo exhibitions at the Fortitude Gallery, Brisbane, of which he was co-director and at Logan Art Gallery and other Brisbane galleries including Gallery 482, Smith+Stonely and Palace Gallery. He is represented in public and private collections throughout Australia.

### Bibliography

*Chris Worfold: New Paintings* Exhibition Room Brochure, Logan Art Gallery, July 2002.





Works celebrate  
the creativity of  
Australia's artists  
and explore what  
could be described  
as the 'spirit' of  
Logan City and  
the diversity of its  
residents.

**Frank Alcock**

*Mountain Lookout*

1988

oil on canvas

655 x 860mm



**Nick Ashby**

*Magik Castle,*

*Nobby's Beach*

1994

synthetic polymer

paint on canvas

1450 x 2690mm



**Tony Allison-Levick**

*Waves of the Wind*

1990

painted steel

610 x 920 x 320mm



**Esther Austin**

*Bush Fire in*

*Wembley Road*

1980-90

oil on canvas

750 x 900mm



**Nick Ashby**

*Figure*

1990

oil on canvas

1795 x 930mm



**Esther Austin**

*View from*

*Tanah Merah*

1980-90

oil on canvas

985 x 835 mm



**Scott Avery**

*Book of Boats*

1997

found boat timbers

990 x 1140 x 770mm



**Jillian Beardsworth**

*Theoretically Speaking*

2006

mixed media

205 x 660mm



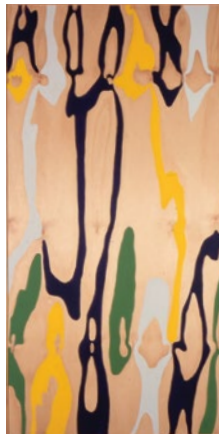
**Lyell Bary**

*Prozac Painting/Irides*

1995

acrylic on plywood

1830 x 915mm



**Erik Berg**

*Bridge Work*

1995

oil on canvas

610 x 900mm



**Jillian Beardsworth**

*An Elementary Treatise*

2006

mixed media

220 x 270mm



**Erik Berg**

*Compton Road*

1996

oil on composition board

690 x 1050mm









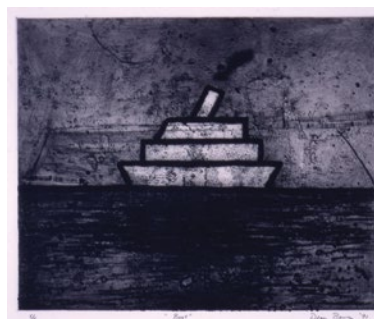
**Erik Berg**  
*Stage One*  
 1995 oil on canvas  
 690 x 1460mm



**Martin Howard Boscott**  
*Chromatic Gram*  
 C-1-12  
 1993  
 dyes and pigments; filter  
 paper and card  
 500 x 405mm

**Christopher Bluefields**

*Oranges in Mexico*  
 1992  
 oil on canvas  
 545 x 690mm



**Dean Bowen**

*Boat*  
 1991  
 etching on paper  
 380 x 470cm

**Christopher Bluefields**

*Tree of Life*  
 1993  
 oil on canvas  
 1490 x 1190mm



**Catherine Brown**

*Junior Flip-Out Sofa*  
 1996  
 plastic, fibre, thread,  
 miniature sofa  
 600 x 730 x 450mm

**Jan Bryant**

*Proteas Persian*  
1988  
pastel on matt board  
555 x 645mm



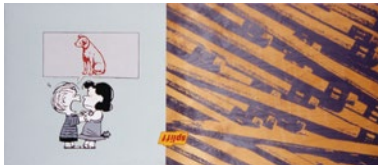
**Minuella Chapman**

*They Sometimes Walk and Talk  
Like That*  
1990  
painted tin  
930 x 130 x 110mm



**Roderick Bunter**

*Bizarre Love Triangle*  
1997  
enamel, vinyl and  
graphite on plywood  
1055 x 245mm



**David Charlton**

*Marbled*  
Ceramic Vase  
2001  
ceramic  
280 x 150mm



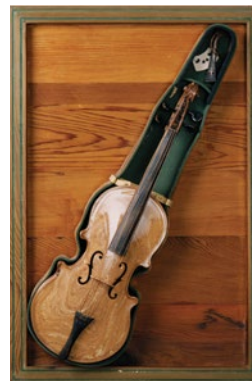
**Minuella Chapman**

*She Was Never Very Happy*  
1992  
lead and metal  
740 x 60 x 70mm



**David Charlton**

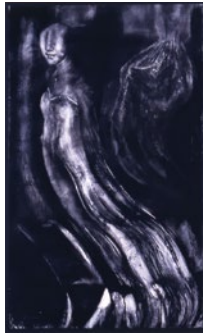
*Violin*  
2001  
ceramic  
690 x 433mm



The collection  
incorporates the  
*Logan, A Sense of  
Place Collection*  
which specifically  
seeks to reflect  
aspects of Logan  
City's physical and  
social environment.

**Barbara Cheshire**

*Bicentennial -  
But Where Am I Going?*  
1988  
mixed media on  
canson dessin  
1580 x 390 x 35mm



**Debra Connors**

*Rubenesque Figure*  
1990  
pastel, gouache, collage on paper  
720 x 550mm



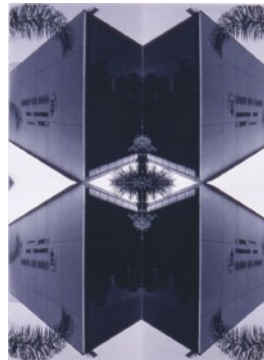
**Paul Churcher**

*Brisbane Landscape-  
After Seurat*  
1990  
oil on composition  
board  
610 x 910mm



**David Cooling**

*Logan "Central"  
Reflections*  
1997  
monochrome  
photograph  
800 x 590mm



**Margaret Clark**

*Standing Side by Side  
When the Storms are  
Most Severe* 1917  
1995  
6 plates, etching,  
collage, oil crayon, ink,  
gouache and tea on  
paper  
1800 x 1100mm



**Prudence Cumes**

*Kodak 8046STD*  
1995  
C type colour  
photograph  
2000 x 750mm



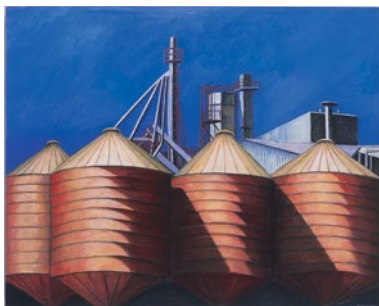
**Kathleen Dempsey**

*Silos at Loganlea*

1995

acrylic on canvas

1220 x 1520mm



**Donna Free**

*David and Delilah in*

*Heaven #2*

1989

oil on cardboard

1250 x 910mm

**Diane Deshong**

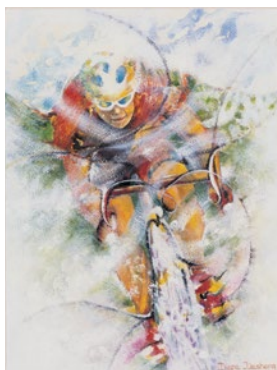
*Vortex*

2005

watercolour, gouche

and acrylic on paper

495 x 390mm



**Joe Furlonger**

*Village in Dorset*

1990

oil on canvas

430 x 540mm

**Margaret Fredrickson**

*Portrait of Reg Knox*

2000

oil on board

820 x 595mm



**Joe Furlonger**

*Hook, Village in*

*Dorset II*

1989

watercolour on paper

385 x 455mm





**Micke Glikson**

*Muroroa*  
1996  
pastel on paper  
1590 x 1460mm



**Kath Hastings**

*Mastectomy,  
Hysterectomy and No  
Love For Me*  
1996  
ink on paper  
1350 x 1280mm



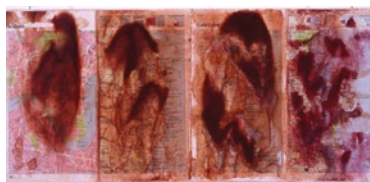
**Juli Haas**

*Party Games*  
1991  
drypoint and  
watercolour  
500 x 330mm



**Scott  
Hollingsworth**

*'As You Like It' -  
Logan's Run*  
1997  
watercolour and  
acrylic on road atlas  
pages  
300 x 665mm



**Genny Haasz**

*Girl on a Bull's Back*  
1988  
ink on paper  
800 x 980mm



**Scott  
Hollingsworth**

*Car Altar Piece*  
Undated, acrylic on  
found metal object  
1200 x 1530mm



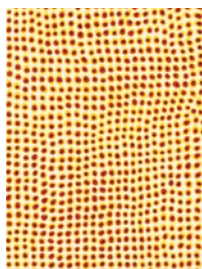
**Scott Hollingsworth**

*Dream of the Authentic*  
1997  
mixed media on board,  
artist frame part of work  
1426 x 820mm



**Scott Hollingsworth**

*Untitled*  
(44 works on paper)  
Undated,  
watercolour and ink on  
paper  
various dimensions



**Adrian Hunter**

*Hermannsburg Trolley*  
1993  
oil on canvas  
1050 x 1550mm



**Jan Hynes**

*Pattern for Australia*  
(Running up a Little  
Black Number)  
1993  
photocopies, acrylic paint,  
sewing pattern sections,  
black crepe fabric, cotton  
thread on board  
1220 x 860mm



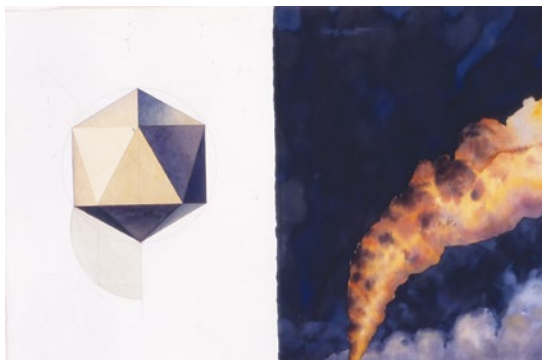
**Jan Hynes**

*Shell Warfare*  
1990  
pencil on paper  
1220 x 860mm



**John Honeywill**

*Armistice IV (Gulf War Series)*  
1992,  
watercolour on paper  
560 x 1500mm



The collection  
describes and  
discusses the  
community and  
the different ways  
it can be seen  
and experienced.

**Lola Irvine**

*Banksia  
Integrifolia*  
1999  
oil on canvas  
600 x 500mm



**Sherrie Knipe**

*Print Product Trolley*  
1992  
etching and aquatint on  
paper, twigs  
945 x 745mm



**John Ivanac**

*Memories of a Journey  
- Mackay to Clermont*  
1993  
acrylic on canvas  
1305 x 1010mm



**Pam Lethlean**

*Canning Street, North  
Carlton, Victoria*  
1989  
oil on canvas  
970 x 1220mm



**Darren Johnson**

*The Logan River Tinnie Trail*  
2003  
watercolour on paper  
300 x 1240mm

**Rosanna Li Wei Han**

*Soles for Souls (detail)*  
2003  
readymade objects of  
cardboard and  
mixed media  
various dimensions





**Lyn Lubach**

*Curtis Falls*  
1988  
oil on canvas  
board  
685 x 540mm



**Kim Mahood**

*Edge*  
1994  
bitumen and powder  
paint on canvas and  
paper  
1300 x 950mm



**Rosemary Lugg**

*Labrador Xmas '89*  
1989  
pastel, oil and collage  
on paper  
1090 x 980mm



**Alicia Maroto**

*Building Around*  
2005  
acrylic on canvas  
1530 x 1860mm



**Katerina Lytras**

*Senility - Most People Hide It Away*  
1992  
linocut on paper  
410 x 1070cm



**Alicia Maroto**

*Sunset at the Lagoon*  
2003  
pastel on paper  
1530 x 1860mm



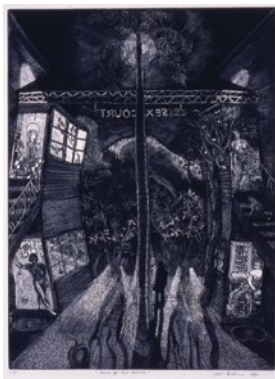
**Ronald McBurnie**

*Court of All Desire*

1991

etching

610 x 450mm



**Simon Mee**

*Wrestling With the*

*Angel of the Lord*

1997

pencil on paper

255 x 235mm



**Andrew Merry**

*The Endangered*

1993

oil on composition

board

945 x 1255mm



**Sally Mintram-Finegan**

*Office No. 2*

1993

mixed media on paper

900 x 655mm



**Shelagh Morgan**

*Mutespace*

1988

collage and mixed media on paper

(3 panels) A & B: 555 x 755mm,

C: 360 x 270mm



**Christine Morrow**

*Layette - Trousseau*

1994

human hair, fabric, elastic, metal

various dimensions

**Norbert Moschner**

*Logan Mill 1886*

1996

oil on canvas

407 x 500mm



**Jimmy Ngalukun**

*Egret with Eeltail Catfish and*

*Water Lilies*

1985

natural ochres on bark

1260 x 360mm



**Jack Oudyn**

*Bumpy Ride*

2003

collage on paper

185 x 265mm



**Alexander Panevin**

*Say Cheese*

1995

colour etching on

paper

350 x 350mm



**Jack Oudyn**

*Branches*

2003

collage on paper

165 x 215mm



**Wendy Pound**

*Without You I Would Fall Over*

2003

acrylic and mixed media on

ceramic

810 x 390 x 680mm



The Logan Art Collection plays an important role in assisting the local community to explore ideas and stories of Logan City's recent past, while illuminating the vibrant present and encouraging the region's individuals to imagine their futures.



**Margaret Redman**

*Neranwood I*

1992

oil on canvas

975 x 815mm



**R. Reithmuller**

*Untitled (detail)*

1992

magazines and acrylic  
various dimensions



**Kate Ryan**

*New Farm II*

Undated

oil on canvas

1200 x 850mm



**Patricia Tolcher**

*Rituals (from 'Totemic  
Structure' series)*

1993

synthetic polymer paint  
on paper

800 x 656mm



**Christopher Trotter**

*Fish*

1988

ochres on corrugated iron  
panels with wood support  
1340 x 800mm



**Christopher Trotter**

*Home*

1997

recycled steel, machine  
parts

690 x 580 x 450mm



**Christopher Trotter**

*The Christmas Chook*

1999

recycled machine parts

350 x 310 x 200mm



**Christopher Trotter**

*The Christmas Chook*

drawing

1998

ink on paper

665 x 430mm

not pictured

**Christopher Trotter**

*The Owl and the Pussycat*

1999

recycled machine parts

900 x 620 x 460mm



**Christopher Trotter**

*Tracks in the Iron*

1988

ochres on corrugated

iron panels with wood

support

1110 x 830mm



Unknown Artist

*Shark and Brolga*

1985

natural ochres on bark

680 x 240mm

**Scott Whitaker**

*Chalice*

1991

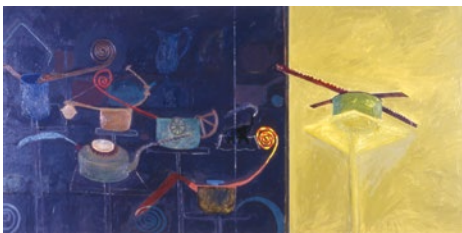
rusted metal, wax and

resin

970 x 900 x 900cm







**Scott Whitaker**

*Exotic Allegory I (diptych)*

1990,

oil and wax on canvas

1020 x 2030mm



**Chris Worfold**

*Canasta*

1996

synthetic polymer paint,

cushions with wood

1200 x 1000mm

**Scott Whitaker**

*Yellow Tea Cup*

1992

oil and wax on plywood

2425 x 1210mm



**Jewel Young**

*Waterford Bridge -*

*Waterford*

1996

oil on canvas board

355 x 450mm

**Logan's Sister City gifts donated to the  
Logan Art Collection:**

Noriko Fujii

Untitled (*Hakubai White Plum in Tree*)

1996, acrylic on wood

1205 x 1285mm

Gift of Hirakata City Council, Japan

Hansai Kikko

Untitled

1996, ceramic vase in timber box

240 x 230 x 235mm

Gift of Hirakata City Council, Japan

Hiroyuki Mizuta

Untitled (*Shell Fan*)

1996, mother of pearl shell, mixed media

565 x 640mm

Gift of Hirakata City Council, Japan

Hiroko Omori

Untitled (*Logan City and Hirakata City Council Emblems*)

1996, silk fabric infolding lacquer frame

285 x 515mm

Gift of Hirakata City Council, Japan

Hiroko Omori

Untitled (*Oshie pasted cloth picture*)

1996, fabric and thread mounted on painted cloth support

695 x 545mm

Gift of Hirakata City Council, Japan

Hiroko Omori

Untitled (*paddle doll, female*)

1996, wood, silk and paint

230 x 100 x 35mm

Gift of Hirakata City Council, Japan

Hiroko Omori

Untitled (*Fujimusume 'Type of Hagoita'*)

1996,

Doll: silk fabric infolding lacquer frame

760 x 325 x 80mm

Shuttle Cocks: feathers, synthetic hair and bells

85 x 95mm

Gift of Hirakata City Council, Japan

Hiroko Omori

Untitled (*paddle doll, female*)

1996, wood, silk and paint

220 x 100 x 40mm

Gift of Hirakata City Council, Japan

Hiroko Omori

Untitled (*Kamuro 'Type of Hagoita'*)

1996, wood, silk and paint

620 x 230 x 100mm

Gift of Hirakata City Council, Japan

Kiyoko Sakamoto

Untitled (*Fuugetsu 'Girl wearing kimono in Spring or Autumn'*)

1996, fabric, porcelain and mixed media

450 x 265 x 180mm

Gift of Hirakata City Council, Japan

Chosen Shinoda

Untitled (*Calligraphy cloud poem*)

1996, ink on fabric and card support

780 x 1815mm

Gift of Hirakata City Council, Japan

Keiko Yoshikawa

Untitled (*Oshibana - 'pressed flower art'*)

1995, pressed flowers

550 x 660mm

Gift of the Artist



# Index

## A

Alcock, Frank 35  
Allison-Levick, Tony 35  
Ashby, Nick 35  
Austin, Esther 4, 35  
Avery, Scott 36

## B

Barker, Jill 6  
Bary, Lyell 8, 36  
Beardsworth, Jillian 36  
Berg, Erik 10, 36, 38  
Bluefields, Christopher 38  
Blundell, Richard 12  
Boscott, Martin Howard 38  
Bowen, Dean 38  
Brown, Catherine 38  
Bryant, Jan 39  
Bunter, Roderick 39  
Burgler, Joanna 14

## C

Chapman, Minuella 39  
Charlton, David 39  
Cheshire, Barbara 41  
Churcher, Paul 41  
Clark, Margaret 41  
Connors, Debra 41  
Cooling, David 41  
Cumes, Prudence 41

## D

Daneels, Max 16  
Dempsey, Kathleen 42  
Deshong, Diane 42  
Duguid, Elizabeth 18

## F

Fredrickson, Margaret 42  
Free, Donna 42  
Furlonger, Joe 42

## G

Gilmour, Guy 20  
Glikson, Micke 44

## H

Haas, Juli 44  
Haasz, Genny 44  
Hastings, Kath 44  
Hollie 22  
Hollingsworth, Scott 44  
Honeywill, John 45  
Hunter, Adrian 45  
Hynes, Jan 45

## I

Irvine, Lola 47  
Ivanac, John 47

## J

Johnson, Darren 47

## K

Knipe, Sherrie 47  
Knox, Reginald 24, 42

## L

Lethlean, Pam 47  
Li Wei Han, Rosanna 47  
Lubach, Lyn 48  
Lugg, Rosemary 48  
Lytras, Katerina 48

## M

Mahood, Kim 48  
Maroto, Alicia 48  
McBurnie, Ronald 50  
Mee, Simon 50  
Merry, Andrew 50  
Mintram-Finegan, Sally 50  
Morgan, Sally 26, 50  
Morgan, Shelagh 50  
Morrow, Christine 50  
Moschner, Norbert 51

## N

Ngalukun, Jimmy 51

## O

Oudyn, Jack 51

## P

Panevin, Alexander 51  
Pound, Wendy 51

## R

Redman, Margaret 53  
Reithmuller, R 53  
Ryan, Kate 53

## S

Spooner, Rodney 28

## T

Tolcher, Patricia 53  
Trotter, Christopher 30, 53, 54

## W

Whitaker, Scott 54, 56  
Worfold, Chris 32, 56

## Y

Young, Jewel 56



Logan Art Gallery

PO Box 3226

Logan City DC Queensland 4114

Cnr Jacaranda Ave & Wembley Road,

Logan Central

Phone: (07) 3412 5519

Fax: (07) 3412 5350

Email: [artgallery@logan.qld.gov.au](mailto:artgallery@logan.qld.gov.au)

