



KINGSTON  
BUTTER  
FACTORY

2022  
JAN - APR

# SEASON PROGRAM

[loganarts.com.au](http://loganarts.com.au)



LOGAN  
ARTS



CITY OF  
LOGAN

# MAYOR'S MESSAGE

It gives me great pleasure to introduce the new Kingston Butter Factory Cultural Precinct.

We have transformed the city's historic butter factory site into a world-class facility that will enable us to showcase vibrant arts and culture.

It's a place to come together, share cultural connection, and celebrate our people.

The precinct delivers an impressive array of event spaces. The permanent outdoor stage and grassed area have an audience capacity of up to 5,000 people. An exciting program of concerts, festivals, and community events are planned for this space.

Also integrated into the natural parkland is a multi-purpose plaza and nature-inspired children's play space.

Central to the precinct offering, is the extraordinary Living Museum of Logan and First Nations space. These world-class exhibition spaces display the exceptional people and artists of our city.

The Butterbox Theatre has been revitalised into a state-of-the-art black box theatre with retractable seating for 230 people. This versatile space will support artist residencies and live performances.

New to the precinct is the custom-built heritage centre, which houses the Logan City Historical Museum, and the original worker's cottage has been revamped to house Devon Pixies Tea House.

The precinct will present a wonderful program of art and entertainment. Importantly, it will be a home for our exceptional artists. A place to nurture Logan's incredible talent.

As visitors come to enjoy the experiences of major events and festivals, arts and culture the precinct will grow our economy.

It's a significant investment and I thank the Australian Government and Queensland Government for supporting us in contributing funding for this milestone development.

I'm very proud to be delivering such a facility within the City of Logan and I have no doubt the community will feel a sense of pride when they visit.

I invite everyone to wander through this inspiring cultural space. Get your friends and family together and enjoy one of the many events on offer.

**Mayor  
Darren Power**  
City of Logan



---

*This Logan City Council project provides for the development of arts and culture in the City of Logan and was funded by Australian Government and Queensland Government in association with Logan City Council.*





## ACKNOWLEDGEMENT OF COUNTRY

Logan City Council respectfully acknowledges the Traditional Custodians of the lands across the City of Logan. They hold the memories, traditions, cultures and hopes of Australia's First Peoples.

**Artwork:** *Wander free* by local artist Sally Terare is a contemporary design that shows how the flora, fauna and environment of the area are interconnected. It also shows how each of us connect with nature. The artwork is a playful statement that features as a large-scale artwork in the plaza area of the precinct.

*Aboriginal and Torres Strait Islander people are advised that this publication contains names and images of deceased people. In complying with cultural protocol, permission has been sought and granted from the families of these individuals to show these stories in this publication.*



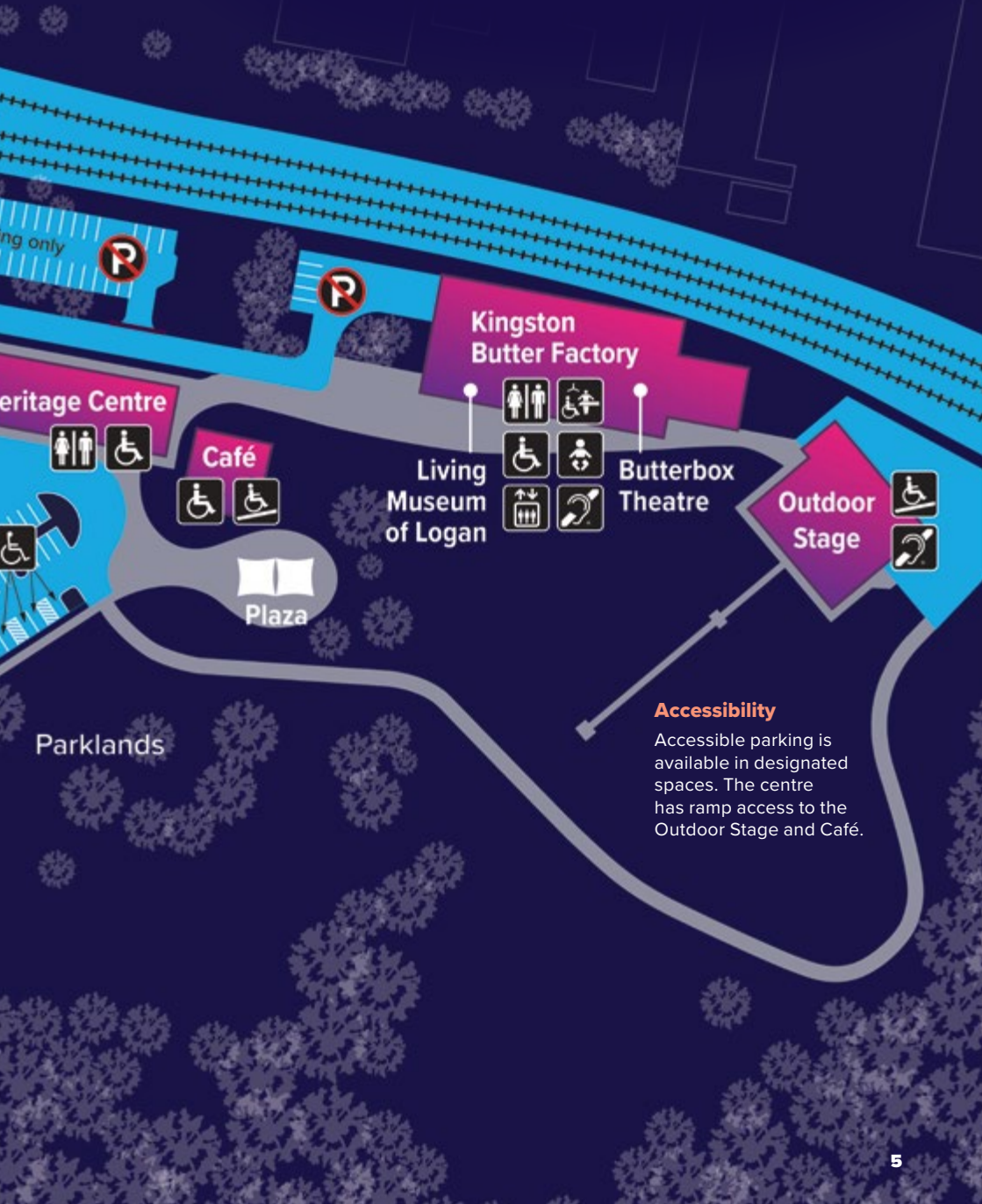


### Parking

KBFCP has onsite parking available for your convenience. The car park holds 82 cars with overflow areas for large events and has a dedicated area for bus parking.



# KINGSTON BUTTER FACTORY CULTURAL PRECINCT



## Accessibility

Accessible parking is available in designated spaces. The centre has ramp access to the Outdoor Stage and Café.

# WHAT'S ON

## BY VENUE

### Butterbox Theatre

<b>Karen Lonsdale in Concert with Topology</b> (p16)	Sunday 13 March
<b>A Celebration of Puppetry with Larrikin Puppets</b> (p20)	Monday 21 March
<b>The Crossing</b> (p21)	Wednesday 23 March (workshop) Thursday 24 March (performance)
<b>Logan Originals</b> (p24)	Friday 25 March, Thursday 14 April
<b>Artist Summit</b> (p22)	Saturday 26 March
<b>Sunday Sunsets - Take me to Paris</b> (p25)	Sunday 27 March
<b>Sunday Sunsets - Speakeasy</b> (p26)	Sunday 3 April
<b>Medea</b> (p27)	Thursday 21 and Friday 22 April

### Living Museum of Logan

<b>Contemporary social history museum</b> (p30): <b>Tuesday to Saturday</b> 10am to 4pm (opening March 2022)	
<b>Permanent exhibitions</b>	<ul style="list-style-type: none"> <li>• <b>Kingston Butter Factory timeline</b></li> </ul>
<b>Exhibitions</b>	<ul style="list-style-type: none"> <li>• <b>First Nations Space</b> (p31)</li> <li>• <b>Nourish</b> (p32)</li> <li>• <b>Snapshot! capturing street styles of Logan City</b> (p33)</li> </ul>

### Outdoor Stage

<b>Kingston Butter Factory Cultural Precinct Launch Party</b> (p8)	Saturday 29 January
<b>Waitangi at Twilight</b> (p11)	Friday 4 February
<b>Song to the Earth</b> (p12)	Sunday 13 February
<b>Free Concert - Eats &amp; Beats</b> (p14)	Friday 25 February
<b>Melting Sunsets</b> (p18)	Saturday 19 March
<b>The Squeeze</b> (p28)	Sunday 8 May

### Plaza

<b>Milkyway Twilight Market</b> (p34)	Fri 21 Jan, Fri 18 Feb, Fri 25 Mar, Thu 14 Apr 5pm to 9pm
<b>KBF Farmers Markets</b> (p35)	Every Saturday from 5 Feb (closed 19 Mar, 16 Apr) 7am to noon

### Heritage Centre

<b>Logan City Historical Museum Inc.</b> (p36): <b>Tuesday to Saturday</b> , 10am to 3pm
---

### Café

<b>Devon Pixies Tea House</b> (p37): High Tea Experience <b>Tuesday to Friday</b> 8.30am to 4pm. <b>Saturday</b> 7am to 3pm
--



# WHAT'S ON

## BY DATE 2022

### January

29



KBF Launch Party  
(p8)

### February

4



Waitangi at Twilight  
(p11)

13



Song to the Earth  
(p12)

25



Eats & Beats -  
Free Concert (p14)

### March

13



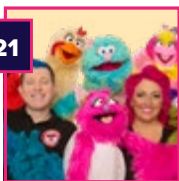
Karen Lonsdale  
in Concert with  
Topology (p16)

19



Melting Sunsets  
(p18)

21



A Celebration of  
Puppetry with Larrikin  
Puppets (p20)

24



The Crossing  
(p21)

25



Logan Originals  
(p24)

26



Artist Summit  
(p22)

27



Sunday Sunsets -  
Take me to Paris  
(p25)

### April

3



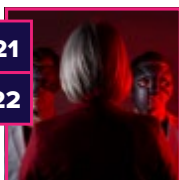
Sunday Sunsets -  
Speakeasy (p26)

14



Logan Originals  
(p24)

21



Medea  
(p27)

### May

8



The Squeeze (p28)

# KBF LAUNCH PARTY

## Saturday 29 January

Logan's new cultural precinct opens on January 29 and we're inviting you to come and celebrate!

When the sun goes down the Launch Party starts on the massive open Outdoor Stage. We'll be marking the arrival of Logan's first-ever cultural precinct with a host of local performers, culture, and spectacle, with the Logan community at the heart of it all.

Don't miss **Chris Tamwoy** with special guest **Tania Rose Gibuma**, live on the big stage.

We'll be mixing it up with a mixture of cultural and contemporary music, dance, visual and spoken word thread of performances opening with a Welcome to Country and a smoking ceremony followed by a host of Logan talent featuring: **Imanzi Rwandan Cultural group, Heilani Productions, LUATĒ, MR.MR, 4114 collective, Te Tai Mauri** and many more.





#### Time

5.30pm to  
10pm

**FREE  
EVENT**

#### Venue

Outdoor Stage

#### Registration

Free entry

**Registration essential at:**  
[loganarts.com.au](http://loganarts.com.au)

#### Details



Food trucks and drinks  
available onsite



Auslan interpretation  
at event



# PUBLIC ART AT KBF

Talented artists spent many hours on-site at the Kingston Butter Factory Cultural Precinct fine-tuning their designs to create impressive outdoor art for visitors to enjoy.

***Wander free*** by local artist Sally Terare is a contemporary design that shows how the flora, fauna and environment of the area are interconnected. It also shows how each of us connect with nature. The artwork is a playful statement that features as a large-scale artwork in the plaza area of the precinct.

A full artist concept of the artwork can be seen on page 3.

Images left and right: Sally Terare (Butchulla, Bundjalung), painting *Wandering free* on the Plaza surface.



The ***Milky Way*** artwork painted around the outdoor stage is based on proto-geometric designs, a phase of image development universal to all cultures. The colour palette is developed from milk products: chocolate, caramel, butter and milk but also references ochre earth tones and the diversity of people living in the City of Logan. The star form refers to the stage and performers, and the stars in the Milky Way overhead.

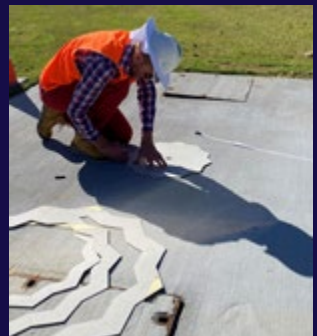


Image above: Lincoln Austin marking out the design of *Milky Way* using stencils.  
Photo: Kirralee Robinson





# WAITANGI AT TWILIGHT

## Friday 4 February

### TE KOROWAI AROHA

Celebrate 21 years of Waitangi Day in Logan with cultural songs and dance and a full program of events.

- Official Welcome/POWHIRI
- KAPA HAKA cultural songs and dance
- Live entertainment: Rock bands, RnB, Reggae and more
- Food stalls including HAANGI and merchandise stalls
- Fitness activities for kids and adults
- Lolly scramble

*Presented by Te Korowai Aroha.*



### Time

**Powhiri (official welcome):** 4pm

**Entertainment:** from 5pm

**Close:** 10pm

### Venue

**Performances:** Outdoor Stage

**Foodstalls/fitness activities:**  
Plaza

### Tickets

\$4 - Tickets available at:  
[loganarts.com.au](http://loganarts.com.au)  
or call the Box Office on  
3412 5626

### Details

Suitable for all ages

# SONG TO THE EARTH

## Sunday 13 February

**Stroll through a forest of musicians in this immersive, live music event.**

Enjoy a euphoric musical experience as the sun sets revealing awe-inspiring light installations.

Song to the Earth is performed by acclaimed Australian string ensemble DeepBlue, Australian percussion icon Michael Askill and his Gong Orchestra, Greta Kelly on Persian Violin, and over 30 talented young local performers.

Come on a magical journey over three acts with an original score and artistic direction by classical composer Dr Corrina Bonshek.

**Act I - Flocking/Spiralling** - Walk amongst the string players as they perform a moving chorale reminiscent of Samuel Barber's Adagio for Strings.

**Act II - Follow the Songbirds** - Follow the string players as they move to the beat of the rainforest.

**Act III - Ocean of Gongs** - Experience the powerful waves of sound from the gong orchestra with solo Persian violin or shah kaman.

**Experience the music up-close, right next to the players in this intimate performance.**



“

When you are listening to an orchestra you should just sit quietly and pay attention. Right? Well, actually, no. Brisbane-based *DeepBlue* is an orchestra that has subverted that approach to classical music in their latest show, *Song to the Earth*, featuring music by composer Corrina Bonshek.

”

*Phil Brown Q Weekend*



Australian Government  
RISE Fund



Queensland  
Government

CITY OF  
**GOLDCOAST.**

**BLEACH\***

### Time

5.30pm to 8pm

**FREE  
EVENT**

### Venue

Outdoor Stage

### Registration

Free entry

**Registration essential at:**

[loganarts.com.au](http://loganarts.com.au)

or call the Box Office on  
3412 5626

### Details

Suitable for all ages

# EATS & BEATS

## Friday 25 February

It's *Eats & Beats* and a music festival rolled into in one – register now to celebrate the Kingston Butter Factory's rebirth as a vibrant new cultural precinct.

It's a perfect date night with your special someone or a great night out with the family.

Experience an *Eats & Beats* like never before with over 25 food trucks and a world-class free music line up featuring:

- Dami Im
- Zeek Power

Chow down on some fan favourites - sliders, pizza and hot wings! Let your tastebuds delve into some culture with some international foods. Finish off with something sweet -

Nutella crepes, caramel popcorn or even waffles! Cool down with a refreshing iced tea or freshly squeezed juice. Or kick on with a coffee hit.





### Time

5pm to 9pm

**FREE  
EVENT**

### Venue

Outdoor Stage

### Registration

Free entry

**Registration essential at:**  
[loganarts.com.au](http://loganarts.com.au)

### Details

Suitable for all ages



[eatsandbeats.com.au](http://eatsandbeats.com.au)



[eatsandbeatslogan](https://www.facebook.com/eatsandbeatslogan)



[@eatsandbeatslogan](https://www.instagram.com/eatsandbeatslogan)





# KAREN LONSDALE IN CONCERT WITH TOPOLOGY

## Sunday 13 March

International performing artist Dr Karen Lonsdale collaborates with Topology, one of Australia's leading contemporary ensembles in an exciting and energetic performance of Michael Nyman's *And Do They Do*. Originally written for the London Contemporary Dance Theatre, *And Do They Do* is a physical feat of endurance for the musicians, with non-stop high energy and pulsating dance rhythms. Nyman is best known for his film scores, including the multi-platinum soundtrack to Jane Campion's *The Piano* and Peter Greenaway's *The Cook, the Thief, His Wife and Her Lover*. Karen Lonsdale and Topology will also perform the famous minimalist work, *In C*, by American composer Terry Riley, alongside some of Logan's rising young artists.

*This project is supported by the Regional Arts Development Fund (RADF). RADF is a partnership between the Queensland Government and Logan City Council to support arts and culture in regional Queensland.*



### Time

4pm to 5pm

### Venue

Butterbox Theatre

### Tickets

All tickets: \$15

### Details

Suitable for all ages





# MELTING SUNSETS

## Saturday 19 March

Melting Sunsets has arrived! Grab your friends and get along to this one-day music festival with a stellar line-up of Australia's hottest artists performing live onstage.

Melting Sunsets is an ultra-modern music festival set in the Kingston Butter Factory Cultural Precinct's beautiful parkland space.

The event runs into the night from 1pm with plenty of food trucks and bars on-site to satisfy everyone's thirst and appetite.

Don't miss out! Grab your tickets, your mates and your picnic blanket for a day to remember.

Gates open	1pm
<b>Briana Dinsdale</b>	1.30pm to 2pm
<b>Stayplton Street</b>	2.15pm to 2.45pm
<b>Good Will Remedy</b>	3pm to 3.30pm
<b>Heavy Wax</b>	3.50pm to 4.25pm
<b>Diana Anaid</b>	4.40pm to 5.15pm
<b>Alex Lloyd</b>	5.30pm to 6.15pm
<b>The Whitlams</b>	6.35pm to 7.35pm
<b>Pete Murray</b>	8pm to 9pm

### Time

Gates open 1pm  
Concert starts 1.30pm  
Event ends 9pm

### Venue

Outdoor Stage

### Tickets

\$85 + BF

Tickets available at [meltingsunsets.com](http://meltingsunsets.com)

Tickets include free rail access on Brisbane lines.



JABBA ENTERTAINMENT & GOLDEN RULE PRESENTS

# MELTING SUNSETS

## PETE MURRAY THE WHITLAMs

ALEX LLOYD & DIANA ANAID

HEAVY WAX & GOOD WILL REMEDY

STAPYLTON STREET & BRIANA DINSDALE

FOOD  
TRUCKS

FREE  
TRAIN  
TRAVEL

SAT 19 MAR 2022

KINGSTON BUTTER FACTORY CULTURAL PRECINCT

Golden Rule

Jabba  
Entertainment

o ztix

MELTINGSUNSETS.COM

Event Partner  
EGAN

scenestr

18+ EVENT



# A CELEBRATION OF PUPPETRY WITH LARRIKIN PUPPETS

## Monday 21 March

Celebrate World Puppetry Day 2022 with an award-winning puppet show performed by Larrikin Puppets, followed by a demonstration and discussion on how puppets work.

This colourful and exciting puppet show for children features many characters, skits, jokes, live interaction and original catchy songs.

Highly entertaining and captivating, Larrikin Puppets encourage audiences to talk, dance, sing and play along.

Their puppeteers, who have received training in the USA under Jim Henson puppeteers from The Muppets and Sesame Street, will have the audience full of wide-eyed wonder, joy and laughs from beginning to end.

*Presented by KBF Cultural Precinct and Larrikin Puppets.*

### Time

10am, 11.30am and 1pm

### Duration

45 minutes

### Venue

Butterbox Theatre

### Tickets

All tickets: \$10  
Tickets available at [loganarts.com.au](http://loganarts.com.au)



**WINNER: Best Kids Live Show / National What's On 4 Kids Awards 2021**



# THE CROSSING

## Thursday 24 March

Kayah, a young man with Down Syndrome, uses dance to express the way he sees the world and the way the world sees him. With the support of his mentor, Gavin, Kayah wants to say he is strong, he is masculine, and he is sexual. He also wants people to know he is vulnerable and "not always happy". *The Crossing* examines the unique bond that exists between these two men and the way it has been forged through the language of dance and improvisation. It has been created by Kayah and Gavin to reflect their common interests and their differences.

### What's behind you?

This workshop will investigate why you dance, what you have to say, how you say it and how to communicate and exchange energy with another. Based on ideas from *The Crossing*, the workshop is led by Gavin Webber and Kayah Guenther.

KBF Cultural Precinct presents *The Crossing* by The Farm. With support from My choice Matters mentorship program.



### Time

**Performance:** 24 Mar,  
11am and 7pm

**Workshop:** 23 Mar, 11am

### Duration

50 minutes

### Venue

Butterbox Theatre

### Tickets

Adult: \$35

Under 30: \$30

Concession: \$25

Group 8+: \$23

School pricing: \$15

Complimentary teacher ticket  
on 10:1 ratio





CONNECTING

# ARTIST SUMMIT 2022

## Saturday 26 March

### Help shape the future of arts and culture in Logan...

If you are a professional artist, work in the Arts, Culture or Heritage sector or are aspiring to, then join us to help shape the future of arts and culture in Logan.

Artists of all backgrounds and experience, working with various art forms, are invited to join the Kingston Butter Factory Cultural Precinct *Artist Summit*.

Meet the programming team and see Logan's newest arts precinct.

The summit will provide an opportunity for local artists to hear more about the precinct, ask questions, provide feedback and generate ideas for future programming opportunities.

Come early to the Saturday morning Kingston Butter Factory Farmers' Markets then join us in the Butterbox Theatre.

To attend, register at: [loganarts.com.au](http://loganarts.com.au)

Sign up to our newsletter at: [loganarts.com.au](http://loganarts.com.au) and stay up to date with artist offerings.

Full day schedule will be available closer to the date on our website.



#### Time

10am to 5pm



#### Venue

Butterbox Theatre

#### Registration

Free entry

**Registration essential at:**

[loganarts.com.au](http://loganarts.com.au)

#### Details

Sign up for our newsletter to stay informed or contact:  
[kbfprecinct@logan.qld.gov.au](mailto:kbfprecinct@logan.qld.gov.au)



# 25 MAR

# 14 APR

## LOGAN ORIGINALS LIVE MUSIC PROGRAM

### **Friday 25 March and Thursday 14 April**

This is your chance to experience free live music by talented local artists.

**25 March** - Paddy McHugh and Band

**14 April** - Emma Bosworth and The Meeting Seasons

Grab a bite to eat at the Milkyway Markets and then head into the KBF Butterbox Theatre for an exceptional music line up, programmed by a local Logan legend.

**January to April guest programmer  
Jimmy Watts.**

#### **Time**

7pm to 8.30pm

#### **Venue**

Butterbox Theatre

#### **Registration**

Free entry

**Registration essential at:**

[loganarts.com.au](http://loganarts.com.au)





Join us for our all-new Sunday Sunsets Series and finish off the weekend with live music.



# SUNDAY SUNSETS - TAKE ME TO PARIS WITH PAULINE MAUDY

## Sunday 27 March

After a string of successful Queensland and international tours, French-born, award-winning singer Pauline Maudy presents a personal show about growing up in two places.

This entertaining, funny and moving show skillfully weaves compelling storytelling, breathtaking music and a thought provoking exploration of whether the grass really is greener on the other side.

One of the truly rare voices on the international scene, Pauline effortlessly channels the greats in French and English and shares some recent compositions, transporting audiences from Parisian alleyways to New York jazz bars in a heartbeat.

*Presented by Human Symphony and Kingston Butter Factory Cultural Precinct.*



Food and drink available

### Time

4pm

### Duration

70 minutes

### Venue

Butterbox Theatre

### Tickets

Adult: \$35  
Under 30: \$30  
Concession: \$25  
Group 8+: \$23

### Details

Suitable for all ages



Join us for our all-new Sunday  
Sunsets Series and finish off  
the weekend with live music.

# SUNDAY SUNSETS - SPEAKEASY

## Sunday 3 April

'Whisper! Speak easy! The police are coming!' Darrrrlings.... Haven't you heard? It's the Roaring 20's again and you're invited to sign our dance cards and join us for a fabulous night of jazz, Charleston and prohibition-style giggle water with the hotsy-totsy cast of *SPEAKEASY*!

*SPEAKEASY* is a journey through the jazz age when liquor was banned, jazz music was rife and dancing was all that mattered. Featuring live vocals, beautiful harmonies and fabulous flappers set to an authentic soundtrack from artists like Glenn Miller, Fred Astaire, Duke Ellington and many more. This lively nod to the past will set your soul alight!

*Presented by KBF Cultural Precinct and Candy Shop Show.*

*Candy Shop Show*

### Time

**Performance:** 4pm

**Free dance workshop:**  
2:30pm to 3:30pm

### Duration

90 minutes

### Venue

Butterbox Theatre

### Tickets

Adult: \$35

Under 30: \$30

Concession: \$25

Group 8+: \$23



# MEDEA

## Thursday 21 and Friday 22 April

Medea is a former Barbarian Princess who left her world behind for the man she loves. When she learns that her husband Jason, leader of the Argonauts, is planning to leave her to marry Glauce, the Greek Princess of Corinth, her love and passion turns to blind rage. With her place in Greek society already under threat, Medea is then banished into exile. This devastating betrayal drives Medea to plot a shocking and calculated revenge on Jason and take back control in a society ruled by men.

This stylised, minimalist production combines conventions of traditional Greek Tragedy, Epic Theatre, Physical Theatre and multiple role playing, to deliver an intense and gripping experience accompanied by a thumping soundtrack.

*Presented by KBF Cultural Precinct and Shock Therapy.*



**SHOCK THERAPY**  
PRODUCTIONS

### Time

21 April, 11am  
22 April, 11am and 7pm

### Duration

60 minutes

### Venue

Butterbox Theatre

### Tickets

Adult: \$35  
Under 30: \$30  
Concession: \$25  
Group 8+: \$23  
School pricing \$15  
Complimentary teacher ticket  
on 10:1 ratio

### Details

Suitable for ages 13+





# THE SQUEEZE

**SNEAK PEEK: Coming next season!**

## Sunday 8 May

**Chugg Music** and current ARIA Award winners for Best Live Act **Lime Cordiale** are proud to announce the third edition of their annual travelling festival, **The Squeeze** for April and May 2022.

2022 sees Oli and Louis Leimbach gather together a stellar line up of Australian talent including **Thelma Plum**, **Client Liaison**, **The Vanns** and many more and take them on the road for the biggest Squeeze Festival to date.

2022 not only features those artists who are at the top of the pile artistically, but also the next super talented generation of artists who are ready to break through including Melbourne's **Teenage Dads** and **merci, mercy** from Sydney. Arrive early and discover your next favourite band.

Tickets on sale now! Grab your mates and head to Kingston Butter Factory Cultural Precinct for this huge festival event.

*Presented by Chugg Music. Supported by Logan City Council.*

### Time

Gates: 12.30pm  
Concert starts: 1.30pm  
Finish: 9.30pm

### Venue

Outdoor Stage

### Tickets

\$121 + BF & TF

Tickets available at  
[squeeze fest.com.au](https://squeeze fest.com.au)

# THE SQUEEZE

FRESHFESTIVAL APRIL-MAY 2022

## • LIME~CORDIALE •

+ THELM'A PLUM + CLIENT LIAISON +  
+ THE VANNS + + MERCI, MERCY +  
+ TEENAGE DADS + PLUS LOCAL ACT +



LOGAN

SUN 8 MAY KINGSTON BUTTER FACTORY

TICKETS ON SALE FRI 3 DECEMBER

[squeezefest.com.au](https://squeezefest.com.au)







# LIVING MUSEUM OF LOGAN

## Opening March 2022.

Living Museum of Logan is a place to experience the stories of Logan's diverse communities. Where you can hear, see and read stories from the people who have made the City of Logan what it is today.

Displays in the museum acknowledge the city's past, illuminate the present and help imagine the future. Living Museum of Logan is a place for communities to tell their own stories in their own words through arts and cultural expression. It provides opportunities to raise awareness, build upon respect and provide a unique visitor experience.

The three museum spaces of Living Museum of Logan provide a changing program of displays co-curated by Logan's community with museum staff.

*Kingston Butter Factory timeline – Factory stories* is an interactive timeline about the history of the Kingston Butter Factory and developed by local artist Nicola Hooper. On permanent display.

Living Museum of Logan will be open in March 2022.  
Visit: [loganarts.com.au](http://loganarts.com.au) for further updates.

## Time

Tue to Sat,  
10am to 4pm

## Venue

Ground floor  
exhibition spaces  
and first floor of  
KBF Main building

## FREE entry

## Contact



07 2803 4700



[loganarts.com.au/  
livingmuseum](http://loganarts.com.au/livingmuseum)

Image: Nicola  
Hooper with Kyra  
Mancktelow, *Factory  
stories* (detail of  
wallpaper), 2021



**LIVING  
MUSEUM  
OF LOGAN**





# FIRST NATIONS SPACE

Co-curated with, by and for Logan's Aboriginal and Torres Strait Islander people, visitors can learn about First Nations' languages and culture and hear digital stories from Logan's Elders.

**Our Aunties and Uncles** records the stories of 4 significant Elders in Logan in their own voices: Uncle Reg Knox, Auntie Eileen Williams, Auntie Robyn Williams and Auntie Flora Cook, filmed and recorded during 2013.

**Our words our stories** are by Aboriginal and Torres Strait Islander people who live, work or perform in Logan City. They offer a unique local insight into their language, heritage and knowledge.

Our Aunties and Uncles and Our words our stories were generously supported by several organisations. Visit: [logan.qld.gov.au/aboriginal-torres-strait-islander-services](http://logan.qld.gov.au/aboriginal-torres-strait-islander-services) for more detail.

Scrubby Creek is the setting for the children's book, **Wajin: The Guardian of Scrubby Creek** by Beverley Knox and Reginald (Uncle Reg) Knox. Visitors can listen to this story as narrated by Missy Knox.

Image: Beverley Knox (left) and Reginald (Uncle Reg) Knox (middle) Missy Knox (right) at Scrubby Creek

## Dates

Permanent display  
from March 2022

## Venue

Living Museum of  
Logan

*Aboriginal and Torres Strait Islander people should be aware that this display will contain names, images and voices of deceased people. In complying with cultural protocol, permission has been sought and granted from these individuals and families to show these stories in this space.*



# NOURISH

## **Food stories connecting people, cultures and countries**

Food is a universal language; a common thread that brings people and communities together in this space and time. *Nourish* showcases stories from Logan's kitchens, markets and gardens, and are told from living rooms and places of work. People's connection to food and to each other is expressed through their stories – stories that link them to someone special, their family, a place in time, or their homeland of origin.

*Nourish* also highlights human survival spirit and creativity. People and communities are nourished with new friendships formed through their individual journeys, communal healing, or just pure joy in life.

Image: *Savia*, 2021, digital photograph. Image by Jacqueline Bawtree

## **Dates**

From March 2022 to  
28 January 2023

## **Venue**

Living Museum of Logan



# SNAPSHOT!

## Capturing street styles of Logan City

Local photographers Isaiah Nakachi, Nadya Wilson and Taijha Utner, led and mentored by Louis Lim, capture the street fashion styles of Logan's residents. Paying tribute to the tradition of street photography, this project aims to capture the contemporary personal style of Logan's diverse residents.

Image left: Louis Lim, *Dave*, 2020, digital photograph

Image right: Louis Lim, *Juliet Vivian*, 2021, digital photograph

## Dates

From March 2022  
to 27 August 2022

## Venue

Living Museum of Logan

*This project is supported by the Regional Arts Development Fund (RADF). RADF is a partnership between the Queensland Government and Logan City Council to support arts and culture in regional Queensland.*







# Milky Way MARKETS

**Friday 21 January, Friday 18 February,  
Friday 25 March, Thursday 14 April**  
**5pm to 9pm**

Kingston Butter Factory's new Milky Way Markets are a vibrant market like no other!

Brought to you by the team behind some of Brisbane's best night markets, these new monthly events will be action packed with food stalls, live entertainment and fun for the whole family.

Enjoy flavours of the world at international food stalls and then wind your way through local vendors selling handmade artisan goods, fashion, home decor and art. Set amongst the lush green grounds and under the twinkling stars, multicultural performers from all over the world will bring the rhythm and groove with live music, dancing, DJs and more all night long.

**Venue** - Kingston Butter Factory Cultural Precinct Plaza

**Dates** - 21 January, 18 February, 25 March, 14 April

**Contact** - [minglemarketsaustralia@gmail.com](mailto:minglemarketsaustralia@gmail.com)





**Every Saturday, 7am to noon**

**From 5 Feb (closed 19 Mar and 16 Apr)**

The Kingston Butter Factory Farmers' Market showcases the best of what Logan small businesses have to offer.

Discover the freshest locally-sourced food produce. Find unique hand-made items ranging from toys and babywear to candles and jewellery. Or unearth pre-loved treasures in the second hand stalls.

Enjoy a fresh cup of coffee or bite to eat while listening to live music by Logan artists. An on-site play space will keep the children entertained.

**We are very excited to bring the biggest farmers' market in Logan to the Kingston Butter Factory Cultural Precinct.**

**Venue** - Kingston Butter Factory Cultural Precinct Plaza

**Contact** - [qldmarketsandevents@gmail.com](mailto:qldmarketsandevents@gmail.com)





The Logan City Historical Museum was established more than 30 years ago with a charter to preserve Logan's past for the future. The museum's exhibits tell the story of the region's European settlement and development of the City of Logan from 1826 to the present day.

The museum was originally named the Kingston Butter Factory Museum. The displays consisted of butter factory-related items. It was renamed the Logan City Historical Museum in April 1995 when it was decided to collect and display other historical items.

The museum moved to temporary premises during the Kingston Butter Factory refurbishments. It now returns to the precinct in a purpose-built Heritage Centre.

Ongoing displays deliver a timeline of the founding of the Kingston Butter Factory and provide a glimpse into the history of Logan. Themes include farming, mining, timber, small industry, railway, schools and involvement in both world wars.

Several floods and fires as well as a tornado have occurred over the last century. This has also provided the museum with a rich tapestry of events from which to collect and exhibit.

The museum is owned and operated by the Logan City Historical Museum Society Inc. The society preserves items of historical significance to educate the public on the history of Logan since the early 1800s. These items reveal some of the influences that have created the community of Logan today.

**Open:** Tue to Sat, 10am to 3pm **Venue:** The Heritage Centre

**Admission:** \$2 for adults and \$1 for seniors. Free entry for children under 16.





## DEVON PIXIES

### TEA HOUSE

**Devon Pixies Tea House has been a favourite high tea venue for locals and visitors since 2012.**

Now located in the grounds of the beautiful Kingston Butter Factory Cultural Precinct, Devon Pixies Tea House continues to provide your favourite high tea experience for celebrations and catchups.

Dine inside in the restored Federation-style cottage rooms or relax on the verandah. We also offer takeaway and casual dining with coffee, cakes, scones, sandwiches, and other tasty treats for when you are out and about at the precinct.

On the go breakfast options will be available during market mornings.

Devon Pixies Tea House caters for baby and bridal showers, birthday celebrations, and more. Book ahead for parties of 6 or more or special occasions.

#### Time

- Tue to Fri, 8.30am to 4pm
- Sat, 7am to 3pm
- Sun, 11am to 3pm (Group bookings and celebrations by appointment).

#### Venue Café

#### Contact



0449 285 277



[tea@devonpixies.com.au](mailto:tea@devonpixies.com.au)



[www.devonpixies.com.au](http://www.devonpixies.com.au)



[facebook.com/DevonPixies](https://facebook.com/DevonPixies)



[instagram.com/devonpixies](https://instagram.com/devonpixies)



# Connecting Creative Logan

## **Discover the new Logan Arts website.**

This is your place to find out what Council has to offer in our arts, culture, heritage and entertainment venues across the City of Logan.

Our key venues showcase and celebrate the amazing talent and stories of Logan and invite you to share it with friends, family and communities. Programs and activities inspire us to connect, have fun, learn and grow.

Our programs include visual and performing arts, exhibitions and displays, and community events.

**Discover what's on.**  
**Keep up to date with opportunities for artists.**  
**Explore our key venues around Logan.**



**LOGAN  
ENTERTAINMENT  
CENTRE**



**KINGSTON  
BUTTER  
FACTORY**



**LIVING  
MUSEUM  
OF LOGAN**



**LOGAN  
ART GALLERY**



**MAYES COTTAGE  
HOUSE MUSEUM**

**loganarts.com.au**



**LOGAN  
ARTS**



**CITY OF  
LOGAN**



# LEC re-opening

## with performances for all ages

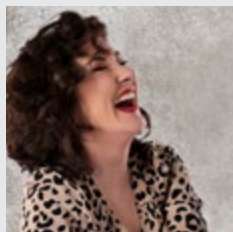
Logan Entertainment Centre reopens as an entertainment centre in 2022 with a fantastic range of performances for all ages. We've been serving the community as a COVID vaccination centre but in 2022 the shows will be back.

Stay up to date with the latest shows and special offers by subscribing at **loganarts.com.au**

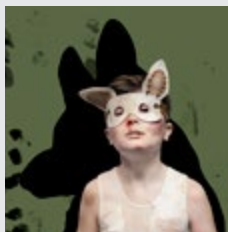
**Below are some of the 2022 highlights**



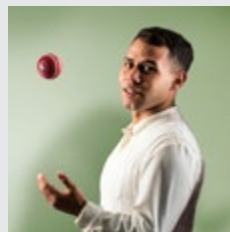
**The Sapphires**



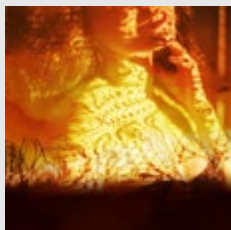
**Fiona O'Loughlin**



**The Boy Who Talked to Dogs**



**Black Cockatoo**



**Summer of the Seventeenth Doll**



**Guess How Much I Love You**



**Edward the Emu**



**The 13-Storey Treehouse**

### BOOK NOW



**Mon to Fri 9.30am to 4.30pm**

Logan Entertainment Centre, 170 Wembley Rd, Logan Central



**Box office: 3412 5626**



**loganarts.com.au**



**facebook.com/loganentertainmentcentre**



**LOGAN  
ENTERTAINMENT  
CENTRE**

**LOGAN  
ARTS**



**CITY OF  
LOGAN**



# **KRANK** School Holiday Program

**Keep busy these school holidays by checking out the KRANK School Holiday Program for kids and teens aged 5 to 17 years.**

There's a huge variety of outdoor sports and creative activities to choose from.

Check out the latest KRANK School Holiday Program booklet at [logan.qld.gov.au/krank](http://logan.qld.gov.au/krank)

[logan.qld.gov.au](http://logan.qld.gov.au)



# PLAN YOUR VISIT

## Getting there

Located at 270 Jacaranda Avenue, Kingston, the Kingston Butter Factory Cultural Precinct (KBF) is in the heart of Logan and easily accessible by pedestrians, public transport or vehicle.



By road the precinct is conveniently located between Brisbane and the Gold Coast, just 5 minutes off either the South East Freeway or the Logan Motorway.



By rail you can access the precinct via Beenleigh or Ferny Grove lines. Disembark at the Kingston Train Station then take a 200m stroll from the station to the venue.



TransLink bus routes stop within a short walk of the precinct. The 3 closest bus stops are Kingston Station (4 min. walk), Kingston Road at Gould Adams Park (9 min. walk) and Clare Road near Kingston Road (12 min. walk).



The precinct is easily accessible by bicycle, with a local cycleways network connecting KBF to key activity centres in the City of Logan.





## PARKING

The precinct has limited onsite parking available for your convenience. The car park holds 82 cars with overflow areas for large events. There is also a dedicated area for bus parking.

## PROOF OF CONCESSION

Discounted tickets are available to fulltime secondary and tertiary students undertaking Austudy, Abstudy or Queensland TAFEs, universities and other approved educational institutions. Student cards must be shown upon entry.

Pensioners holding a current valid Pensioner Concession Card or Queensland Repatriation Health Gold Card issued by Centrelink or Department of Veteran's Affairs are eligible for concession. **(The 'Health Care Card' issued by Centrelink is not accepted.)** Seniors holding a Queensland Seniors Card are also eligible for concession. Valid concession cards must be presented upon entry.

Holders of a Queensland Seniors Business Discount Card are not entitled to concession rates.

### Companion card

Kingston Butter Factory Cultural Precinct accepts Companion Cards for selected performances. The Companion Card must be presented at time of booking or the Companion Card ID provided.

## COVID-19 POLICY

We operate to keep our guests safe and adhere to all current Queensland Health Directives. Remember to check in using the *Check In Qld* app to help keep you COVID safe. Our top priority is the health and safety of our patrons, volunteers and staff. For details and updates visit: [loganarts.com.au](http://loganarts.com.au)

## ACCESSIBILITY

The precinct provides access for people of all abilities.

### Mobility assistance

All precinct venues are accessible. There is ramp access to the Outdoor Stage and Café.



The Butterbox Theatre offers accessible seating for patrons who use wheelchairs or have other mobility concerns. If you wish to access these please advise the box office at time of booking.

### Hearing assistance

All spaces within the precinct are equipped with hearing loop assistance.



### PWD bathrooms

PWD bathrooms are available in the Kingston Butter Factory building; the café; and the Heritage Centre. A **Changing Spaces** accessible bathroom can be found on the ground floor within the KBF building.

### Hush room

The Hush Room is attached to Butterbox Theatre and provides a calming, relaxing space for people experiencing difficulty processing sensory information.



## HOW TO BOOK



**In Person:** LEC - 170 Wembley Road, Logan Central QLD 4114



**Phone:** Box Office 07 3412 5626



**Online:** [loganarts.com.au](http://loganarts.com.au)



The Kingston Butter Factory Cultural Precinct is owned and operated by Logan City Council, providing quality facilities for our community and visitors.

Every care has been taken to ensure the information in this brochure is correct at the time of printing. The presenters accept no responsibility for any errors, omissions or changes leading to inaccurate information, including cancellations or venue/time variations. Please confirm booking details with the box office or check online closer to the performance date.

Various handling and credit card fees apply depending on method of booking.

For more information refer to **[loganarts.com.au](http://loganarts.com.au)**

#### Contact us:



**Box Office: 07 3412 5626**



**[kbfprecinct@logan.qld.gov.au](mailto:kbfprecinct@logan.qld.gov.au)**



**[loganarts.com.au](http://loganarts.com.au)**



**[facebook.com/kbfculturalprecinct](https://facebook.com/kbfculturalprecinct)**



**[instagram.com/kbfculturalprecinct](https://instagram.com/kbfculturalprecinct)**

