

The logo for Logan Entertainment Centre (LEC) features the letters 'LEC' in a stylized, white, sans-serif font on a red background. The 'L' and 'E' are connected at the top, and the 'C' is a simple circle. Below the letters, the text 'LOGAN ENTERTAINMENT CENTRE' is written in a smaller, white, sans-serif font.

LEC

LOGAN ENTERTAINMENT CENTRE

A photograph of an entertainment venue interior, likely a nightclub or lounge. The scene is dimly lit with vibrant purple and pink stage lights. In the foreground, there are tables with white tablecloths and chairs. In the background, a large, curved structure, possibly a bar or stage, is illuminated with bright white light, creating a strong lens flare effect. The overall atmosphere is energetic and modern.

Your
entertainment
destination

SHOWGUIDE

January - June 2014



On behalf of Logan City Council, I welcome you to our Logan Entertainment Centre and the great range of shows on offer for the year ahead.

The Logan Entertainment Centre Show Guide provides a list of the many exciting shows we have on offer for you to enjoy.

With an auditorium capable of seating more than 600 people, Logan Entertainment Centre showcases a diverse range of national and international musical performances and artists every year and the line-up for 2014 promises to be just as spectacular. The adjacent Limelight Bistro & Bar provides the perfect venue to catch up with friends before a show and serves up some delicious seasonal meals.



The entertainment membership is back again, continuing to offer terrific rewards to dedicated guests and entertainment enthusiasts.

I wish to extend a warm welcome to each and every one of you and, on behalf of the residents of Logan, hope you have an experience to remember.

A handwritten signature in blue ink that reads "Pam Parker". The signature is written in a cursive, flowing style.

Cr Pam Parker, Mayor of Logan City

MESSAGES

I am excited to be at the Logan Entertainment Centre and to have the opportunity to present the first show guide since joining the team.

We have a wide range of performances at LEC where we aim to deliver events that both engage with and reflect the diversity and dynamism of our community.

Here are just a few highlights of the first six month's of 2014 - The year starts with a bang and our ever popular *Mayor's Merry Melodies* with Greg Aspeling in *My Way* a tribute to big band sounds of Paul Anka. In March we are presenting *Wulamanayuwi and the Seven Pamuni*, an enchanting family show retelling Snow White and the Seven dwarfs using the language and the rhyme of the Tiwi Islands. Later we welcome the return of the ever popular *Melbourne Comedy Festival Roadshow*.

LEC is an incredibly versatile venue and you might visit us as part of a school, community or corporate event. Whatever reason for your visit we look forward to welcoming you for an entertaining and engaging experience.

John Webb
Program Leader, Logan Entertainment Centre & Community Venues



Logan Entertainment Centre, Limelight Bistro & Bar, and Logan Community Venues are owned and operated by Logan City Council, providing quality facilities for our community and visitors.

THREE SIMPLE WAYS

TO BOOK A SHOW



ONLINE

Our online booking system offers you the ability to select your preferred seat online. Still a little unsure which is the best seat to select? Allow our automated system to select the next best available seat for your performance of choice.

Tickets will be posted out to you if booked at least five days prior to the event, otherwise they will be held for collection at Logan Entertainment Centre box office.

Please note: not all productions or events can be booked online.



PHONE

Tickets can be purchased over the phone **07 3412 5626**



IN PERSON

Secure your tickets over the counter at Logan Entertainment Centre, 170 Wembley Road, Logan Central.

Box office hours:

Monday to Friday, 9.30am to 4.30pm
and one hour prior to performances.

www.loganentertainmentcentre.com.au

Every care has been taken to ensure the information in this brochure is correct at the time of printing. The producers accept no responsibility for any errors, omissions or changes leading to inaccurate information, including cancellations or venue/time variations. Please confirm booking details with the box office or check online closer to performance date.

Greg Aspeling

performing

My Way

The Paul Anka
Story

Supported
by Katey
Aspeling and
a spectacular
big band

Tuesday 4 February, 11am

Price per person:

Adult, table: \$21.50

Adult, balcony: \$20.50

Group 8+, table: \$20.50

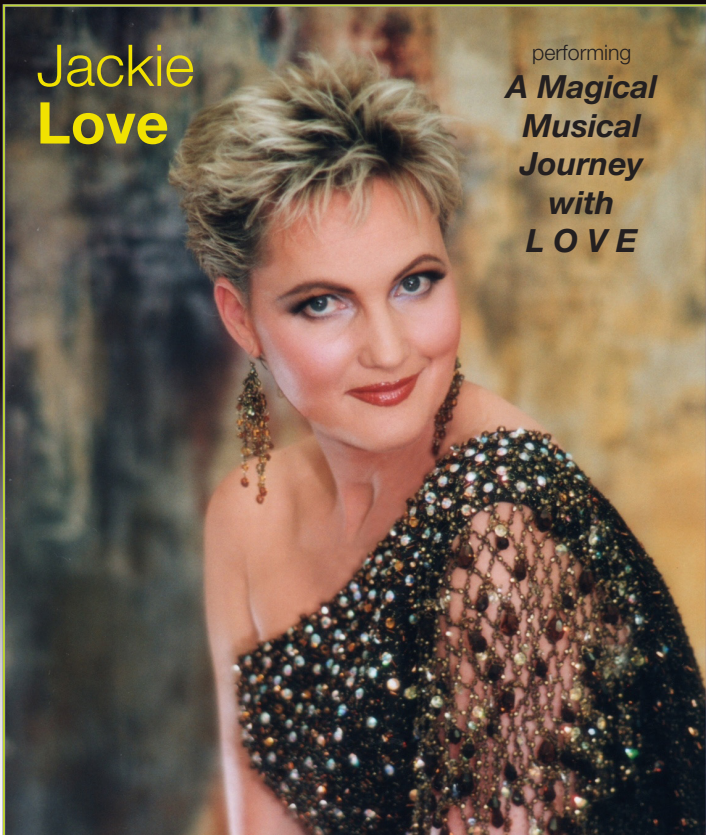
Group 8+, balcony: \$19.00

Ask about our discounted subscriber rates

Mayor's
**Merry
Melodies 19**

Jackie
Love

performing
*A Magical
Musical
Journey
with
LOVE*



Tuesday 4 March, 11am

Price per person:

Adult, table: \$21.50

Adult, balcony: \$20.50

Group 8+, table: \$20.50

Group 8+, balcony: \$19.00

Mayor's
**Merry
Melodies 19**

Ask about our discounted subscriber rates



Fighter line up to be announced soon!



Saturday 8 March, 7pm

Price per person:

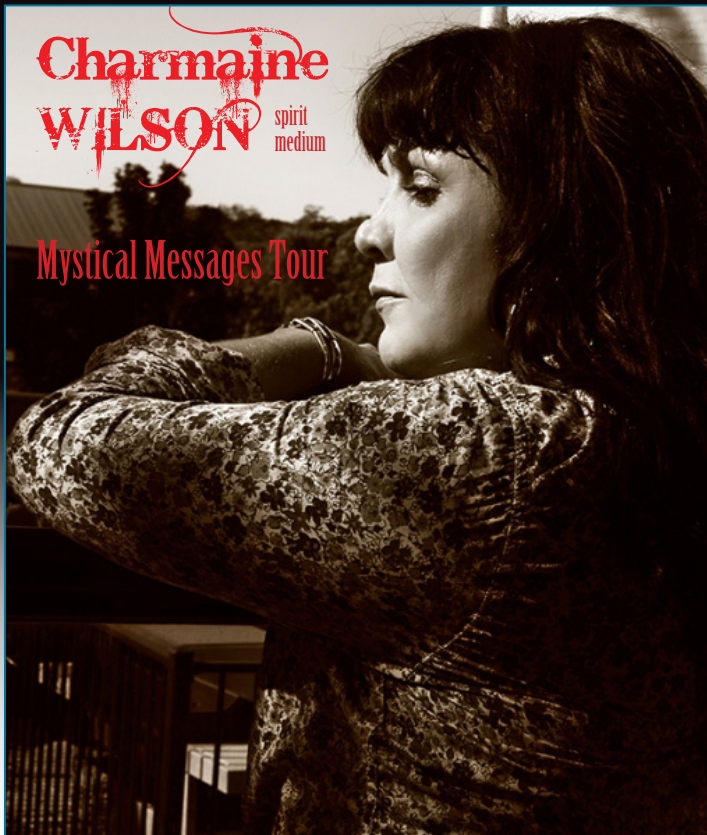
Adult, standing: \$50

Adult, seating: from \$70

VIP tables available

Contact organiser directly

on 0412 638 496.



Charmaine
WILSON spirit
medium

Mystical Messages Tour

Tuesday 11 March, 7.30pm

Price per person:

Adult: \$50

Recommended age 16+

Limelight Bistro & Bar Open

Bookings essential

07 3412 5006

WULAMANAYUWI

AND THE SEVEN PAMANUI



Using the language and rhyme of the Tiwi Islands, *Wulamanayuwi and the Seven Pamanui* is an enchanted fairy tale of myth and magic.



Inspired by *Snow White* and the *Seven Dwarfs*

Friday 14 March, 10.30am
Friday 14 March, 1pm
Saturday 15 March, 4.30pm

Price per person:

Adult: \$15

Group 8+/Members: \$12

School Groups 8+: \$10

We recommend for ages 7+

Kinsmen / Wickety Wak

In "Celtic Blunder"



The Kings of Comedy are at it Again

Presenting exciting Celtic Music as it has never been seen before.
Wickety Wak Riverdance? You'd have to be kidding.....

Friday 21 March, 7.30pm

Price per person:

Adult: \$40

Concession: \$38

Group 8+/Member: \$35

Limelight Bistro & Bar Open

Bookings essential 07 3412 5006

CALENDAR GIRLS

By Tim Firth



**BASED ON THE TRUE STORY OF ELEVEN WOMAN'S
INSTITUTE MEMBERS WHO POSED NUDE FOR A CALENDAR
TO RAISE MONEY FOR THE LEUKAEMIA RESEARCH FUND.**

Saturday 22 March, 2pm
Saturday 22 March, 7.30pm

Price per person:

Adult: \$30

Concession: \$28

Group 8+/Member: \$25

jAlly
entertainment

Limelight Bistro & Bar Open
Bookings essential 07 3412 5006

Jazz and Shiraz

foodmusicwine

Saturday 29 March 2014 3 - 9 pm

Kingston Butter Factory Community Arts Centre,
Milky Way, Kingston



The popular twilight concert is on again, featuring spellbinding **Grace Knight**, David De Vito, Scat, Ranae Suttie, Lauren Lucille Quartet and Mal Wood and friends.

Bring a blanket or chair.

Tickets \$20.

(available from January 2014)

For tickets phone Logan
Entertainment Centre on

3412 5626 or go to

www.loganentertainmentcentre.com.au

For more information visit
www.logan.qld.gov.au

Licensed event.
Strictly no BYO.
ATM available.

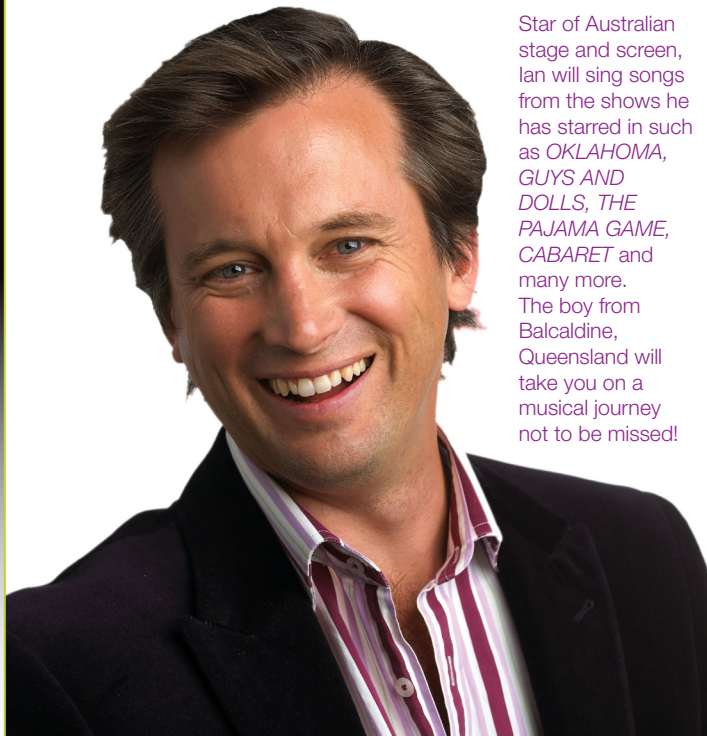
Autumn
tones

LCC
LOGAN ENTERTAINMENT CENTRE

LOGAN
CITY COUNCIL

Ian Stenlake

performing
The Leading Man



Star of Australian stage and screen, Ian will sing songs from the shows he has starred in such as *OKLAHOMA*, *GUYS AND DOLLS*, *THE PAJAMA GAME*, *CABARET* and many more. The boy from Balcaldine, Queensland will take you on a musical journey not to be missed!

Tuesday 15 April, 11am

Price per person:

Adult, table: \$21.50

Adult, balcony: \$20.50

Group 8+, table: \$20.50

Group 8+, balcony: \$19.00

Ask about our discounted subscriber rates

Mayor's
**Merry
Melodies 19**



MELBOURNE INTERNATIONAL
**COMEDY
FESTIVAL
ROADSHOW**

Saturday 3 May, 7.30pm

Warning: Performances may contain coarse language, sexual references and material that can offend.
Recommended for people aged 15+.

Price per person:

Adult: \$30

Concession: \$28

Group 8+/Member: \$25

Limelight Bistro & Bar Open

Bookings essential 07 3412 5006

**FREE
FAMILY EVENT**



Sunday 4 May 2014

**Mayes Cottage & the Kingston Butter
Factory, Kingston
10 am - 2 pm**

*Enjoy free entertainment and family fun!
Market stall items, food and drinks available
for purchase.*

STEP BACK IN TIME

and celebrate Logan's heritage at A Time Before Festival (previously Mayes in May).

This free event, held at Logan's most historic addresses, Mayes Cottage and Kingston Butter Factory, makes for a great family fun day out.

The cottage will be open with museum displays and free guided tours. For kids there will be pony rides, animal farm, face painting, and tomato planting.

There will also be pig racing, sheep shearing displays, vintage cars, whip cracking, craft and hobby demonstrations, country music and much more.



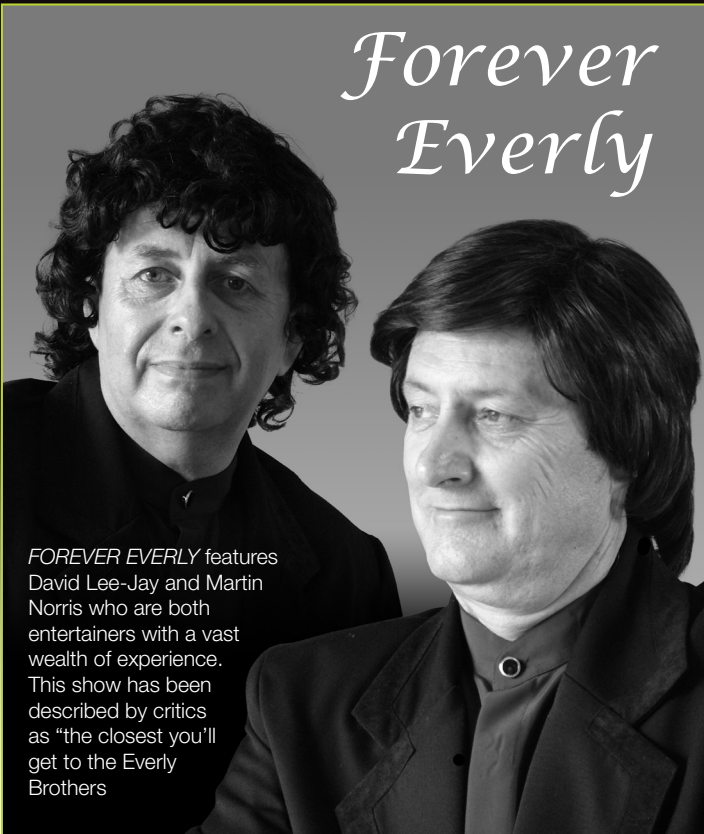
GETTING THERE

Catch public transport to Kingston Train Station or park at the Kingston Butter Factory (Milky Way, Kingston) and get the free shuttle bus to Mayes Cottage.

The bus will run regularly between 10am and 2pm and accommodates prams and wheelchairs.

For more information:
Phone: 3412 4819
Email: [events@
logan.qld.gov.au](mailto:events@logan.qld.gov.au)

Forever Everly



FOREVER EVERLY features David Lee-Jay and Martin Norris who are both entertainers with a vast wealth of experience. This show has been described by critics as “the closest you’ll get to the Everly Brothers

Tuesday 13 May, 11am

Price per person:

Adult, table: \$21.50

Adult, balcony: \$20.50

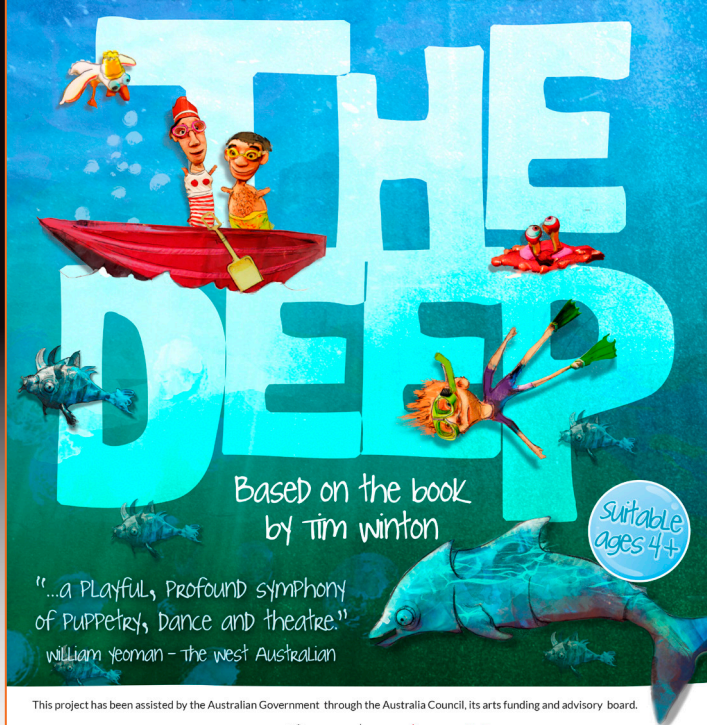
Group 8+, table: \$20.50

Group 8+, balcony: \$19.00

Mayor's
**Merry
Melodies** 19

Ask about our discounted subscriber rates

SPARE PARTS PUPPET Theatre Presents



Based on the book
by Tim Winton

Suitable
ages 4+

"...a Playful, Profound symphony
of PUPPETRY, Dance and theatre."
William Yeoman - The West Australian

This project has been assisted by the Australian Government through the Australia Council, its arts funding and advisory board.

**COUNTRY+
ARTS+WA=**



**SPARE
PARTS**
puppet theatre

Wednesday 14 May, 4.30pm

Price per person:

Adult: \$15

Group 8+/Members: \$12

School Groups 8+: \$10



David **Scheel**

performing
Don't Shoot Me I'm Only The Piano Player

A hilarious musical journey in the company
of one of the world's most original
musical satirists.

Tuesday 3 June, 11am

Price per person:

Adult, table: \$21.50

Adult, balcony: \$20.50

Group 8+, table: \$20.50

Group 8+, balcony: \$19.00

Mayor's
**Merry
Melodies 19**

Ask about our discounted subscriber rates

Love Letters

by **A. R. Gurney**

*... so I asked her to
write to you which I hope*

Starring international TV actors Hannah Waterman (EastEnders) and Huw Higginson (The Bill), Love Letters has enveloped audiences with its story of an enduring bittersweet affair between two childhood friends. A finalist for the Pulitzer Prize for Drama, this unique theatrical experience will astound, charm and move audiences.



Australia's Premier
Theatre Touring Company

Thursday 26 June, 7.30pm

Friday 27 June, 7.30pm

Saturday 28 June, 7.30pm

Price per person:

Adult: \$30

Concession: \$28

Group 8+/Member: \$25

Limelight Bistro & Bar Open

Bookings essential 07 3412 5006

Coming Soon to Logan City

JUNE

Logan Eco Action Festival (Expo event) Sun 8 Jun - Griffith University Logan Campus

JULY

Little Pattie (Morning Tea & Music) Tue 1 Jul - LEC

Naidoc Week Sun 6 to Sun 13 Jul - Various locations

Managing Carmen (Theatre) Fri 11 Jul & Sat 12 Jul - LEC

AUGUST

Wombat Stew (Children's theatre) Tue 12 Aug & Wed 13 Aug - LEC

Book Week @ Logan City Libraries Sat 16 to Fri 22 Aug - Various Logan Libraries

Logan Loves Seniors (Expo event) Tue 19 Aug - LEC

Simon Gallagher (Morning Tea & Music) Tue 29 Aug - LEC

SEPTEMBER

Australian Flag Day (Ceremony event) Wed 3 Sep - Logan Administration Centre

Just the Ticket (Comedy theatre) Fri 12 Sep & Sat 13 Sep - LEC

The Beggars (Morning Tea & Music) Tue 23 Sep - LEC

OCTOBER

Bombshells (Comedy theatre) Fri 3 Oct & Sat 4 Oct - LEC

Rhonda Burchmore (Morning Tea & Music) Tue 21 Oct - LEC

Community Koala Survey Day Sat 18 Oct & Sun 19 Oct - Throughout Logan

Black Cockatoo Survey Day Sun 19 Oct - Throughout Logan

NOVEMBER

Dance & Schools End of Year Celebrations LEC

DECEMBER

Summer Reading Club All of Dec 2014 & Jan 2015 - Logan Libraries

Kamah! (Morning Tea & Music) Tue 9 Dec - LEC

Logan Mayor's Christmas Carols Sat 13 Dec - Date & venue to be confirmed

For more information on any of these events please visit www.logan.qld.gov.au or www.loganentertainmentcentre.com.au closer to the event date.



Situated on the forecourt of the Logan Entertainment Centre, Limelight Bistro & Bar offers mouth watering & affordable meals, sweet treats and smooth coffee within a relaxed social atmosphere.

Limelight is open from 9.30am to 2.30pm, Tuesday to Friday*, and pre-show dining is available for selected Logan Entertainment Centre shows (bookings recommended).



*(unless otherwise advertised)

Limelight Bistro & Bar

170 Wembley Rd, Logan Central

Phone **07 3412 5006**

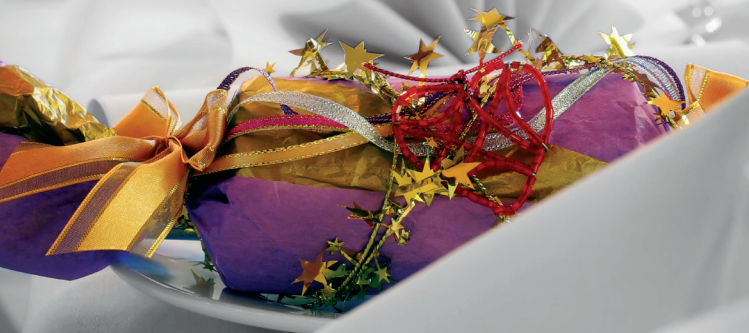
Email limelightbistro@logan.qld.gov.au

BEENLEIGH EVENTS CENTRE

Beenleigh Events Centre is a flexible, multi-purpose air-conditioned venue that caters for small group functions up to events for 450 guests.

Consider Beenleigh Events Centre for your next event.

- **Free undercover parking**
- **Fully catered or self-cater options**
- **Fully licensed with a bar and kiosk**



Beenleigh Events Centre

Cnr Crete and Kent Streets, Beenleigh

Phone **07 3412 4403**

Visit www.loganentertainmentcentre.com.au

river
YOUR STATION



"THE BREAKFAST CLUB"

Marnie T (3rd from left) and Mike Byrne (2nd from left) team up with Graham "Snowy" Snow and Tania Scherf to host the breakfast show.



Become a 2014 member

Only \$10 for all these benefits in 2014

- 10% discount at Limelight Bistro and Bar
- 7 days free trial membership at Logan Metro Sports Centre
- Discounted member ticket prices for selected performances
- Preferential seating where available
- Automatic entry to 4 prize draws throughout the year
- Opportunity to meet and greet some of the stars performing in our 2014 theatre season
- Monthly member e-newsletter
- An invitation to our 2015 season launch

Your local entertainment centre continues to provide great live performances, free parking, exceptional and friendly customer service. LEC is also available to hire for your next event!

Memberships are available via phone or in person only.



PHONE 3412 5626

Membership can be purchased over the phone



IN PERSON

Secure your membership over the counter at Logan Entertainment Centre, 170 Wembley Road, Logan Central.

Box office hours:

Monday to Friday, 9.30 am to 4.30 pm



LOGAN ENTERTAINMENT CENTRE



LOCATED MIDWAY
BETWEEN **BRISBANE**
AND THE **GOLD COAST**
FREE PARKING

The Logan Entertainment Centre can be tailored to host a wide range of events, from conferences to dinners, graduations, concerts and theatrical productions. With a capacity of 1,200 and a variety of modes available, our versatility to accommodate any function is what makes the LEC the perfect choice to showcase your next event.

For further information, phone **(07) 3412 4770** or visit **www.loganentertainmentcentre.com.au**

Logan Entertainment Centre
170 Wembley Rd, Logan Central
Phone **07 3412 4770**
Visit **www.loganentertainmentcentre.com.au**



Like us on
Facebook



LOGAN
CITY COUNCIL