



# EXHIBITION PROGRAM 2024

LOGAN ART GALLERY





## ACKNOWLEDGEMENT OF COUNTRY

Logan Art Gallery and Logan City Council respectfully acknowledges the Traditional Custodians of the lands across the City of Logan. We extend that respect to the Elders, past, present and emerging for they hold the memories, traditions, cultures and hopes of Australia's First Peoples.

Mural design by Aunty Peggy Tidyman, Gunggari Elder, *Cycles of change* 2020

## LOGAN ART GALLERY

**Entry is free.**

🕒 Open 10 am to 5 pm

📅 Tuesday to Saturday

📍 Corner Wembley Rd and Jacaranda Ave, Logan Central, QLD

☎ 07 3412 5519

📷 **loganartgallery** @ **artgallery@logan.qld.gov.au**



## WELCOME TO LOGAN ART GALLERY

Discover ever-changing exhibitions at our award winning Logan Art Gallery. The gallery showcases artworks by local artists of all nationalities including Aboriginal and Torres Strait Islanders and culturally diverse artists, as well as major touring exhibitions.

Exhibitions and displays are changed every 6 to 7 weeks, so there is always something new to explore. On opening nights, you can meet with exhibiting artists and hear artist talks.

We run free practical art workshops relating to the exhibition program. Children can have fun in the Young Peoples Gallery where there are interactive activities.

Follow us on Instagram @loganartgallery and visit our website **[loganarts.com/artgallery](https://loganarts.com/artgallery)**

Front cover image: Hermannsburg Potters Collaborative, *Antala-iperra / Weather* 2022, terracotta and underglazes. 55 x 39 x 39cm. Courtesy of Hermannsburg Potters. Image credit Sara Maiorino

# DISTRACT | ATTEND

Jacqueline Scotcher

This exhibition responds to our contemporary life through installation, animation, and abstract paintings. The artworks explore our fast pace digital lifestyles and shrinking attention span. The work positions the idea of 'slowness' in nature as a rebellious act and fights to restore a balance in life. Ultimately it is an exhibition about pausing and pondering how you spend your time.



Jacqueline Scotcher, *Angourie Rocks* 2021, acrylic on canvas.

# NEON MUGSHOT FILE

Yu Chao Du

*Neon mugshot file* is a new installation by Rochedale South artist, Yu Chao Du. The work comprises a series of 'mugshot' images digitally drawn using an iPad that were created each day over a year between 28 November 2021 and 27 November 2022.



Yu Chao Du, *Neon mugshot file (detail)* Nov. 2021 - Nov. 2022, digital painting



## PEOPLE AND PAINTINGS IN PLACES

Sue Poggioli

Sue Poggioli presents a series of hand-coloured linocuts featuring imaginary art museum spaces with crowds gathered to view iconic works of art. This ongoing series highlights the 3-way interaction between artwork, viewer, and artist. The exhibition will feature selected works from the Logan Art Collection to create new images featuring Logan locals in the crowd.



Sue Poggioli, *Homage Frida Kahlo*, 2022, hand-coloured linocut.

## RIPPLE EFFECT – OUT OF ARTWAVES

Kiara Costamagna

Each year, Logan Art Gallery selects one of the outstanding young artists who exhibited in the annual *Artwaves: Logan and adjacent areas secondary schools art exhibition*. Through mentoring, the young artist develops their own solo exhibition for the Young Peoples Gallery. The 2023 Artwaves Mentorship was jointly awarded to 2 students and the second recipient was Kiara Costamagna.

Kiara Costamagna, *Relished jellyfish*, 2022, textiles and lights.





Natasha Narain, *Kantha painting 1*, 2021, acrylic, collage and mixed media on cardboard.

## ReKALIBRATING KANTHA AT LOGAN

**Natasha Narain**

Natasha Narain presents a body of new and resolved works that continue from those exhibited at Logan Art Gallery in 2019 as part of *Purpose Re-Purpose*. Here, she expands the stories, scale, methods, and materials. She demonstrates how her altered books have come closer to forms of painting via the change from canvas to large-scale cardboard. Natasha Narain will be doing a residency during this exhibition.

*The residency is supported by the Regional Arts Development Fund, a partnership between the Queensland Government and Logan City Council to support local arts and culture in regional Queensland.*



## WORKSHOP WONDERS XXII

A special selection of student works chosen from Logan Art Gallery's practical art workshop program will form part of the 22nd annual exhibition. The program is an integral part of the visual arts education and cultural experience in the City of Logan.

Participants' work from Rachael Lee's 'fragile vessels' workshop, July 2023.



# THE MARVELLOUS AND MAGICAL – COLLAGE AND THE MOVING IMAGE

Fiona West

An exhibition of photographs, kinetic sculptures, projections, and objects by Fiona West. This exhibition explores experiences of displacement, belonging and memory through the combination of handcrafted and digital artworks.



Fiona West, *Space Pony* 2018, archival inkjet print on photo rag paper.



## NOT QUITE THERE

Artworks by Nick Ashby, Sharna Barker, Leah Emery, Timothy Fairless, Genevieve Memory, Vicky Satchwell, Joe Swepson and Leisa Turner.

Curated by emerging artist Genevieve Memory, *Not quite there* is a group show involving 8 South East Queensland artists from diverse personal and artistic backgrounds who all work with the body as subject. The show is designed to be very inclusive both in terms of participating artists and expected audience.



*Not quite there* installation views, Grey Street Gallery 2022. Artworks by Nick Ashby, Sharna Barker, Genevieve Memory and Vicky Satchwell.

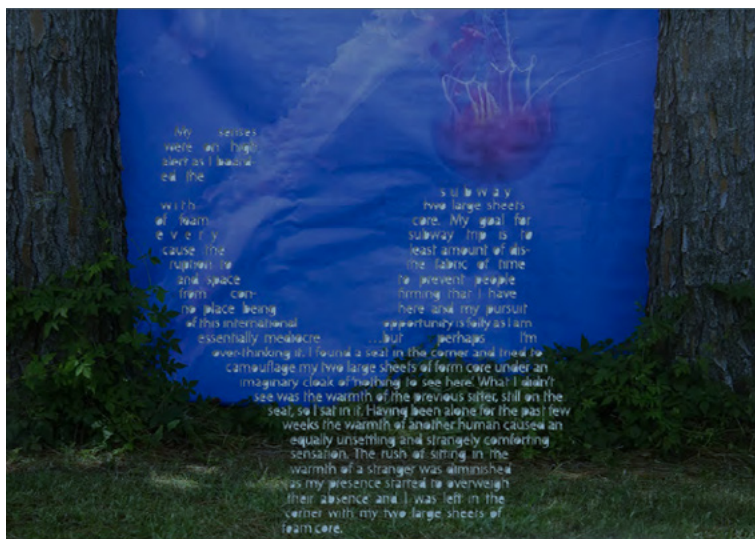
26 APRIL – 1 JUNE 2024



## ROBYN DAW YOUNG VISUAL ARTIST SCHOLARSHIP FINALISTS

An exhibition of work by the selected finalists of the 2024 Robyn Daw Young Visual Artist Scholarship.

Robyn Daw, *False Iuddite* c. 1990, tapestry.



## DODGING CHAINSAWS

Martin Smith

*Dodging Chainsaws* is a retrospective from the past 20 years of Martin Smith's photo-text practice. His artworks combine personal narratives that are hand-cut from seemingly unrelated photographs. Each work represents an episode or memory from his life told through text and the photograph.

Martin Smith, *Foamcore*, 2018, pigment print with cut out letters. Courtesy of the artist and Jan Murphy Gallery, Brisbane



Left: Atousa Manafi, *Dervish*, 2022, watercolour on paper. Courtesy of the artist.  
Right: Sheida Vazir-Zadeh, *Young woman in solidarity*, 2022, digital photograph.

## POSTCARDS FROM IRAN – ZAN ZENDEGI AZADI

Sheida Vazir-Zadeh and Atousa Manafi

Waterford West artist, Sheida Vazir-Zadeh presents a series of photographic and video works depicting everyday gender discrimination experienced by 3 generations of Iranian women in her family. For this exhibition, she has collaborated with Iran based artist Atousa Manafi.

*This project is supported by the Regional Arts Development Fund, a partnership between the Queensland Government and Logan City Council to support local arts and culture in regional Queensland.*



## SIMORGH (PHOENIX) – THE MYTHICAL LEGENDARY BIRD

Razia Ghazal

As a Hazara Australian artist, Razia Ghazal tells the stories of the people she has crossed paths with – stories of love, pain, hope, nostalgia, migration, and culture.

## LAY OF THE LAND

Ann Huthwaite

*The Lay of the Land* is an exploration of natural landscapes based on the artist's personal journey through life.

## CARING FOR COUNTRY

Troy Skeen

The exhibition presents the recent work by Troy Skeen. As fellow artist and son of the respected Widi, Biri and Kuku Thaypan Elder, Uncle Joseph Skeen, Troy continues the family practice of storytelling, both personal and traditional, through his art.

Troy Skeen, *Echidna journey*, 2022, acrylic on canvas.



## UNCLE REG KNOX MEMORIAL EXHIBITION

This annual exhibition of work by local First Nations artists, named in honour of Uncle Reg Knox (1934-2020) is selected by Logan Elders.

## WORLD ENVIRONMENT DAY POSTERS

*World Environment Day posters* brings together a collection of vibrant artworks designed by Logan's young artists. World Environment Day is an annual global event for positive environmental action.

Zachary Jacobs, St Edward's Primary School, Year 4, *I am the Land The Land is Me* 2023, Winner of Mayor's Choice 2023







## CLAY ON COUNTRY

### An Artback NT Touring Exhibition

Clay on Country celebrates the enthusiasm for ceramic practice in the central desert region. A diverse and eclectic survey, the exhibition includes over 40 artists, the majority of whom have made new work for the show. Some are established ceramic artists, some are reconnecting with the medium after a hiatus, others are incorporating clay as a medium in their practice for the first time. All have produced accomplished, insightful, and contemporary works that reflect the culturally and historically rich and complex region where they live and work.

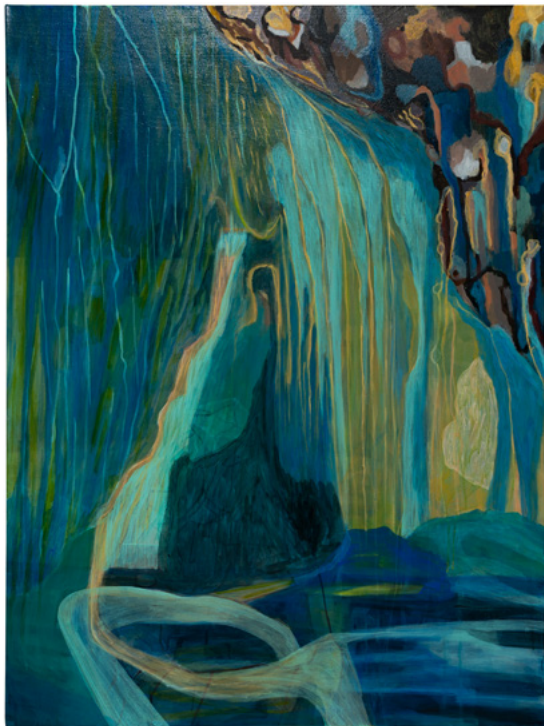
Claire Freer, *Mud and Mulga V*, 2021. Handbuilt and pit fired using clay and Acacia aneura collected from the Ngaanyatjirra Lands with permission. H 460 x 350 x 250 mm. Courtesy of the Artist, Image credit Oliver Eclipse.



Gretel Bull, *Mon Amure, Mi Amure* 2022, glazed midfire ceramic, 42 x 22 x 19 cm. Courtesy of the Artist. Image credit Sara Maiorino

*Clay on Country* was curated by Jo Foster and Neridah Stockley and is toured by Artback NT, with the support of Creative Australia, and Visions of Australia.





## A VIEW FROM THE EDGE

Paula Irene Payne

Paula Irene Payne's exhibition *A view from the edge* is a response to contemplations of environmental themes such as global warming and the rising temperatures of the ocean.

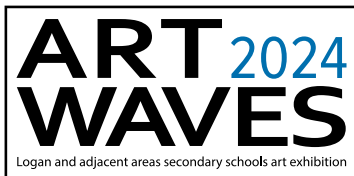
Paula Irene Payne, *Anatomy of a cave*, 2022, acrylic on canvas

13 SEPTEMBER – 19 OCTOBER 2024



## ARTWAVES 2024

Logan and adjacent areas  
secondary schools  
art exhibition



*Artwaves* is an annual art exhibition of work sourced from the creative and talented high school students in the Logan region. *Artwaves* aims to show the wealth of imagination and creativity present in the City of Logan and adjacent areas.

Yolanda (Yuelin) Wang, Calamvale Community College, year 12, *Indulge* 2023, acrylic on canvas



# MYALL CREEK AND BEYOND

## The New England Regional Art Museum Touring Exhibition

*Myall Creek and Beyond* is a major touring exhibition curated by Indigenous curator and artist Bianca Beetson. The project commissioned Aboriginal artists including Judy Watson, Fiona Foley, Robert Andrew, Laurie Nilsen, Carol McGregor, Warraba Weatherall, Radical Son, David Leha, Quarralia Knox and Tim Leha to produce new work responsive to the history and site of Myall Creek. The exhibition also includes existing works by Julie Gough, Colin Isaacs and Jolea Isaacs. Bianca Beetson attributes the selection of artists to their ability to create works which deepen the conversation around the issues surrounding the Myall Creek Massacre.

*The exhibition Myall Creek and Beyond is a partnership between the New England Regional Art Museum and the Friends of Myall Creek Memorial. It is supported by Regional Arts NSW through the Regional Arts Fund, the New South Wales Government through Create NSW and the Australian Government Department of Communications and the Arts Indigenous Language and Arts Program. Exhibition Sponsor the JNC Group*

*Supported by*



Australian Government  
Regional Arts Fund



Australian Government  
Indigenous Languages and Arts



Australian Government  
Visions of Australia

*Project partners*



ARMIDALE & REGION  
ABORIGINAL CULTURAL CENTRE  
ABORIGINAL PLACE INC.





25 OCTOBER – 30 NOVEMBER 2024



Carol McGregor *Myall Creek Gathering Cloak* 2018, natural ochre, thread on possum skins



Robert Andrews *Reveal*, 2018, ochres, oxides, aluminium, acrylic and electromechanical motor

## LOGAN PORTRAITS

A curated exhibition of portraits by Logan artists reflecting the diverse cultural backgrounds of people from our local community.

Lien Jansen, *Pearl necklace series, sister no. 4*, 2016, oil on canvas.



## RIPPLE EFFECT: OUT OF ARTWAVES

Each year, Logan Art Gallery selects one of the outstanding young artists who exhibited in the annual *Artwaves: Logan and adjacent areas secondary schools art exhibition*. Through mentoring, the young artist develops their own solo exhibition for Logan Art Gallery's Young Peoples Gallery.

Laura Pittam (2023 Mentorship recipient)  
*Successful Slimmers* 2023, collage.



## TWO BIRDS

**Kristy Ann Duffy  
and Toni Bielby**

An exhibition of works by 2 artists who share a passion for telling the stories of birds through their art. Toni Bielby's expressive bird sculptures are complemented by Kristy Ann Duffy's bold and colourful paintings. This exhibition features birds from South East Queensland, particularly those that can be spotted around the Logan area.



Kristy Ann Duffy, *The Lunchtime Whistle*, 2023, acrylic on canvas.

## CONVERSATION WITH NATURE

**Ronelle Reid**

An exhibition of new paintings by Cedar Vale artist Ronelle Reid inspired by community responses to the question 'If you could talk to animals, what would you say?'



Ronelle Reid, *Blue* 2022, pencil on paper

*This project is supported by the Regional Arts Development Fund, a partnership between the Queensland Government and Logan City Council to support local arts and culture in regional Queensland.*



# WORKSHOPS, EVENTS AND ACTIVITIES

Logan Art Gallery offers an extensive range of free inspirational events and activities that complement exhibitions on display.

All events and activities are free. People of all ages and abilities are welcome to get involved. To find out about upcoming workshops, events and activities please visit **[loganarts.com.au/events](https://loganarts.com.au/events)** or scan the QR code.

Bookings are essential for all workshops, events and activities.

## Creative workshops

Find out more about exhibitions on display, learn artists' techniques and make new friends by taking a free practical art workshop at the gallery. Workshops led by experienced education staff and/or exhibiting artists are free of charge and provide all materials needed.

## Artist talks

To complement Logan Art Gallery's exhibition program and encourage discussion and debate, the gallery offers exhibition talks and panel discussions.



### What's on

Scan the QR code to find out more.

## Openings

Experience the new exhibitions at the Gallery and celebrate with the artists. Openings are a great opportunity to catch up with friends, learn more about the latest exhibitions, and meet the artists and curators.

## Guided tours

Logan Art Gallery arts educators and/or exhibiting artists can provide talks and tours of current exhibitions for schools and community groups. Bookings are essential.

## Music in the Gallery

This program showcases the musical talent in Logan with an afternoon of live music at Logan Art Gallery. This is a free event and light refreshments are served following each performance.



# GROUP BOOKINGS

Group bookings from schools, community or social groups are most welcome. We welcome any age or level of ability. Session times and lengths can be tailored to suit your needs. We can arrange group after-school activities.

## **Creative group workshops**

We offer free practical art workshops to groups led by experienced educational staff and/or exhibiting artists. These are free of charge and provide all materials. Group bookings can be flexible to suit the needs of the group.

For more information or to make a group booking, please call the Gallery on 07 3412 5519 to check availability, or email [artgallery@logan.qld.gov.au](mailto:artgallery@logan.qld.gov.au)

## **Art + Dementia**

Art + Dementia is a discussion-based tour of artworks to provide intellectual stimulation and social inclusion for people with dementia and their companions.

Participants are encouraged to contribute knowledge, engage in interpretation, express emotions and recall memories.

## **Descriptive exhibition tours**

Join us for a descriptive tour of the current exhibitions. The tours are designed for vision-impaired visitors and aim to provide an experience of the exhibited works through spoken descriptions.

If you or someone you know would benefit from this program, please call us on 07 3412 5519 or email [artgallery@logan.qld.gov.au](mailto:artgallery@logan.qld.gov.au).

# CREATIVE OPPORTUNITIES

Our passionate teams work with Logan artists to further their career development. Through our key arts and cultural venues, we offer residency programs, mentoring, workshops, performance work and funding opportunities.

Visit the Logan Arts website [loganarts.com.au/creatives](http://loganarts.com.au/creatives) to see a full list of current opportunities for artists.

## **Logan Artworkers Networking Events (LANE)**

LANE is a networking program that gives artists from Logan and surrounding areas an opportunity to share their thoughts about current projects and issues. If you are an arts practitioner and would like to be involved in this exciting program, please call the Creative Industries Projects Officer on 07 3412 5426 or email [artgallery@logan.qld.gov.au](mailto:artgallery@logan.qld.gov.au). Bookings are essential.





## GALLERY CREATIVE FUN FOR KIDS

### **School holiday fun**

Fun, educational programs are offered for children during school holiday periods. All programs are held in conjunction with the current exhibitions. Hands-on practical workshops are designed to encourage children to develop ideas, experiment through creativity. Bookings are essential for workshops unless advertised as 'drop in' sessions.

### **Let's get arty for pre-schoolers**

Come along and join us for mornings of creative fun at Logan Art Gallery. These exciting hands-on workshops encourage toddlers and their carers to learn about artworks through art and craft.

### **Young Peoples Gallery**

Logan Art Gallery has a dedicated Young Peoples Gallery that showcases exhibitions for or by young people. This space often has fun, interactive activities for younger visitors.

# INSPIRE YOUR STUDENTS WITH CREATIVITY AT LOGAN ART GALLERY

Logan Art Gallery provides free educational activities for primary and secondary schools. Activities include self-guided tours, guided tours and hands-on creative workshops inspired by the current exhibitions on display. Our team can also tailor the exhibition-inspired experience for you and your students.

## **Self-guided tours**

Self-guided tours are encouraged at Logan Art Gallery. Please contact the Gallery to let the team know of your planned visit so that we can ensure that your visit does not clash with other activities or events.

SUITABLE FOR Primary/Secondary

## **Guided tours**

Join our Gallery team for a fun and informative guided tour and interactive activities of the exhibitions on display at Logan Art Gallery. These interactive tailored tours unpack art theory in an exciting and age-specific way to give an in-depth insight into the exhibitions.

SUITABLE FOR Primary/Secondary. DURATION 2 hours.

## **Exhibition-based workshops and tours**

Inspire your students with a hands-on creative workshop and exhibition tour. The Gallery team can provide creative workshops in various mediums including painting, drawing, sculpture and printmaking based on the current exhibitions.

SUITABLE FOR Primary/Secondary.

DURATION 2 hours (30 minute Gallery tour, 90 minute workshop)

## **Meet the artist**

Inspire your senior students and introduce them to contemporary artists at Logan Art Gallery. This bespoke program provides senior students with informal discussions about the exhibitions, and allows them to gain an in-depth understanding of the artist's practices and the art making process.

SUITABLE FOR Seniors Years 11–12.

## **How to book**

Bookings are essential for all Logan Art Gallery tours and workshops. Contact us to discuss suitable dates and times.

Please book at [artgallery@logan.qld.gov.au](mailto:artgallery@logan.qld.gov.au) or by phone 07 3412 5671



## GALLERY STORE

Looking for a unique gift? The Logan Art Gallery store stocks creative contemporary gifts and collectibles including original jewellery, scarves, glassware, ceramic works, wooden items, prints, art publications and children's books.

The gallery store promotes local artists and designers and provides a perfect setting for you to sell your work and increase visibility. If you are a Logan artist and want to sell your work send us an enquiry.

Isabell Warman, *Ceramic vessels*, 2021

# VISITING LOGAN ART GALLERY

Logan Art Gallery is located on the corner of Wembley Road and Jacaranda Avenue, Logan Central

The Gallery is open 10 am to 5 pm Tuesday to Saturday and admission is free.

## Getting there

Logan Art Gallery is a 35-minute drive from Brisbane off Pacific Motorway Exit 23, and 45 minutes from the Gold Coast off Pacific Motorway Exit 24.

Public transport is available to Logan Art Gallery by bus, train (Woodridge Train Station) or taxi/rideshare. Please visit [translink.com.au](http://translink.com.au) to map your journey.

## Parking

Free parking for cars and buses is available at the front of the Gallery. Entry to the car park is on Wembley Road. There are 3 designated disabled parking bays immediately in front of the Gallery.

## Accessibility

Accessible parking is available at the front of the building. Please make sure your pass is clearly displayed when parking in these spaces. The Gallery foyer and corridors are wide enough to fit wheelchairs and prams.

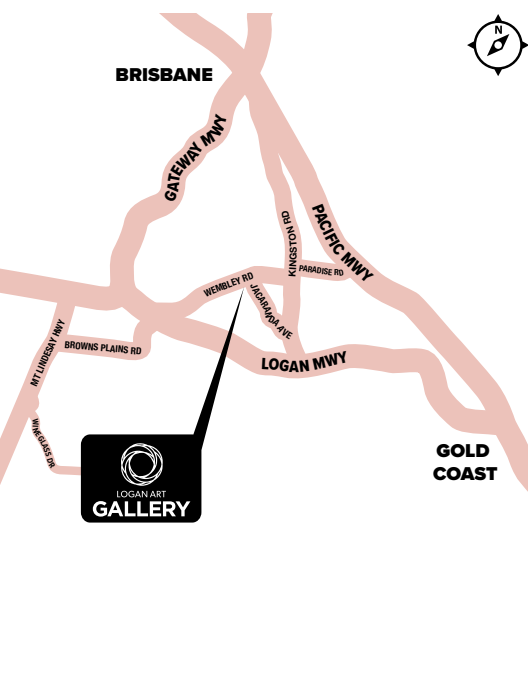
Interpretation services in Auslan and languages other than English can be provided to visitors on request. Please contact the Gallery team about your interpretation needs before your visit on phone 07 3412 5519 or via email

[artgallery@logan.qld.gov.au](mailto:artgallery@logan.qld.gov.au)

## Contact us

☎ 07 3412 5519

@ [artgallery@logan.qld.gov.au](https://www.facebook.com/artgallery@logan.qld.gov.au)





## GALLERY CLOSURES

- › 24 December 2023 to 1 January 2024 (reopening Tuesday 2 January)
- › Tuesday 23 January 2024
- › Friday 26 January 2024 (Australia Day)
- › Tuesday 5 March 2024
- › Friday 29 March 2024 (Good Friday)
- › Saturday 30 March 2024 (Easter Saturday)
- › Tuesday 23 April 2024
- › Thursday 25 April 2024 (Anzac Day)
- › Tuesday 4 June 2024
- › Tuesday 16, Wednesday 17, Thursday 18, Friday 19 July 2024
- › Tuesday 10 September 2024
- › Tuesday 22 October 2024
- › Tuesday 3 December 2024
- › Sunday 22 December 2024 – Wednesday 1 January 2025 (reopening Thursday 2 January 2025)



# Step back in time

## Historic Mayes Cottage



Step back in time and visit historic Mayes Cottage, a reminder of Queensland's pioneering age. The cottage was built in 1887 and is virtually unchanged. Enjoy the calm and relaxing atmosphere with a picnic or share a yarn on the veranda with our friendly volunteer guides.

- 📍 20 Mawarra Street, Kingston
- 🕒 Open Thursday to Saturday (except public holidays)  
10:30 am to 4 pm
- 🆓 FREE Entry

For group bookings:

@ [mayeres@logan.qld.gov.au](mailto:mayeres@logan.qld.gov.au)

☎ 07 3412 4147





## SHARING LOGAN'S STORIES

Living Museum of Logan is a place to experience Logan's diverse communities. Hear, see and read stories from the people who have made the City of Logan what it is today. Displays in the museum acknowledge the city's past, illuminate the present and help imagine the future. Living Museum of Logan is a place for communities to tell their own stories in their own words through arts and cultural expression. It provides opportunities to raise awareness, build upon respect and deliver a unique visitor experience. The spaces of Living Museum of Logan provide a changing program of displays co-curated by Logan's community with museum staff.

📍 Located inside the Kingston Butter Factory building  
270 Jacaranda Ave, Kingston, Qld

🕒 Open Tuesday to Saturday (except public holidays)  
10 am to 4 pm

🎟️ FREE Entry

☎️ 07 2803 4724

@ [livingmuseum@logan.qld.gov.au](mailto:livingmuseum@logan.qld.gov.au)





“There wasn't a job in the whole factory that I didn't do at any time. ...The Chief Butter-maker resigned at 70 or 72, or something like that and I took his job as Chief Butter-maker.”

ERIC JAMES MAYES  
1917-2011

KBF employee 1933-1979  
Chief Butter-maker 1967-1979  
Interviewed in 1998 by Jeff Kuckert  
as part of Logan City Central Libraries  
Oral History Project



“Great big kerfuffle when we changed in metric, I can tell you. It was a right do, it w pounds when I first went there.”

PATRICIA MARY HOWIE

KBF Office Employee 1968-1973  
Interviewed in 1998 by Jeff Kuckert  
as part of Logan City Central Libraries  
Oral History Project





 [loganarts.com.au](http://loganarts.com.au)

 [loganartgallery](https://www.instagram.com/loganartgallery)



LOGAN ART  
**GALLERY**

**WHERE ART COMES ALIVE**



LOGAN  
**ARTS**



CITY OF  
**LOGAN**