



**LOGAN
ENTERTAINMENT
CENTRE**



Season Highlights

JANUARY TO APRIL 2026

loganarts.com.au





Silver Series: A Tribute to Linda Ronstadt & Friends

Friday 20 February, 11 am

Linda Ronstadt's career was blessed by not only talent, but by chance and location. Along the way, she ended up working with some of the biggest names in music, transforming many of their songs into her own.

Featuring songs by **Linda Ronstadt, The Eagles, Jackson Browne, Crosby, Nash, Stills, and Young, Bonnie Raitt, Joni Mitchell, James Taylor, Neil Young, Warren Zevon** and more.



Ticket price
\$22–\$31





Tribute Show



Let There Be Rock: AC/DC Tribute

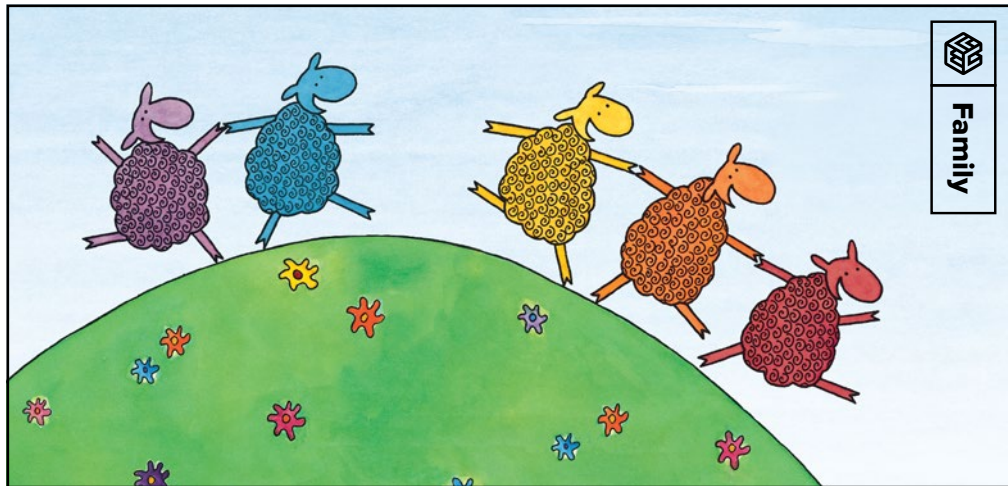
Friday 13 March, 7:30 pm

Lace up and feel the power of the rock 'n' roll legends, **AC/DC**. Inspired by the electrifying energy of **AC/DC**, this tribute show channels the band's high-voltage performance with a sound that's as iconic as the music itself. Featuring the super-charged vocals of **Rob**

McMullan that capture the raw, untamed spirit of the greatest rock band in the world, this show is your ticket to carrying a piece of that legendary sound and rebellious attitude wherever you go.



Ticket price
\$45–\$69



Where is the Green Sheep?

Saturday 28 March, 10 am

A Monkey Baa Theatre Company and QPAC's Out of the Box co-production. Written for the stage and directed by Eva Di Cesare.

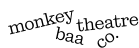
Where is the Green Sheep? is an immersive visual theatre experience blending puppetry and animation. We meet Blue Sheep, who loves blue flowers and Red Sheep, who loves to cartwheel in the fields, Bath Sheep, who loves bubbles and Bed Sheep, who loves to bounce... But where IS that Green Sheep?

Blending puppetry and animation, this beautiful production invites young audiences to join

our three farmers on their quest to find the elusive green sheep. Co-created with students from Bankstown West Public School, this production integrates their voices as narrators, ensuring the work resonates deeply with young audiences.



Ticket price
\$25





Mayor of Logan's Multifaith Breakfast

Tuesday 31 March, 6:30 am

Diversity is at the heart of Logan's identity, making it one of our greatest strengths. Faith plays a significant role in the lives of many in Logan, inspiring more people here to serve others than anywhere else in Australia.



Ticket price
\$39

Join Mayor Jon Raven for his Multifaith Breakfast. This morning of prayer, reflection, and connection will offer a unique opportunity to strengthen community ties, foster understanding, and appreciate the role of faith in shaping a compassionate and inclusive city.

ONE SHOW ONLY

ENGELBERT ★ DOLLY ★ TOM ★ OLIVIA

SPECTACULAR VARIETY SHOW



Tribute Show

The Australian Engelbert Humperdinck, Tom Jones, Dolly Parton, Olivia Newton-John Spectacular Variety Show

Sunday 12 April, 2:30 pm

Raff De, a world-class singer, and a dynamic artist with a vibrant, swooning voice, will take you through this magnificent show, channeling the legendary **Engelbert Humperdinck's** much-loved songs as well as complementing exciting beloved hit songs and crowd favorites of **Tom Jones**.



Ticket price
\$64.95–\$69.95

Lisa Stewart, the beautiful and charismatic international entertainer from the Gold Coast, known for her work with *Street Café*, will showcase some of the iconic hits from **Dolly Parton** and then take you into the world of **Olivia Newton-John**, performing classic favorites. Lisa will also show off her exceptional Saxophone skills.



Tribute Show



Silver Series: Rebecca O'Connor “Simply the Best” as Tina Turner

Friday 24 April, 11 am

In 2026, **Rebecca O'Connor** will set stages ablaze with a high-octane tribute to the Queen of Rock ‘n’ Roll. **Rebecca** brings an electrifying new show that blends nostalgia with fresh, fiery energy. It’s a celebration of **Tina’s** indomitable spirit.

Even **Tina Turner** herself said, *“Rebecca is so good, it’s scary.”* And as **Mick Fleetwood** of *Fleetwood Mac* put it, *“Rebecca is way beyond a tribute act... an amazing singer and performer in her own right.”*



Ticket price
\$22–\$31





Tribute Show

Table
tickets
\$68 include
dinner and
ice cream



Rebecca O'Connor: “Simply the Best” as Tina Turner

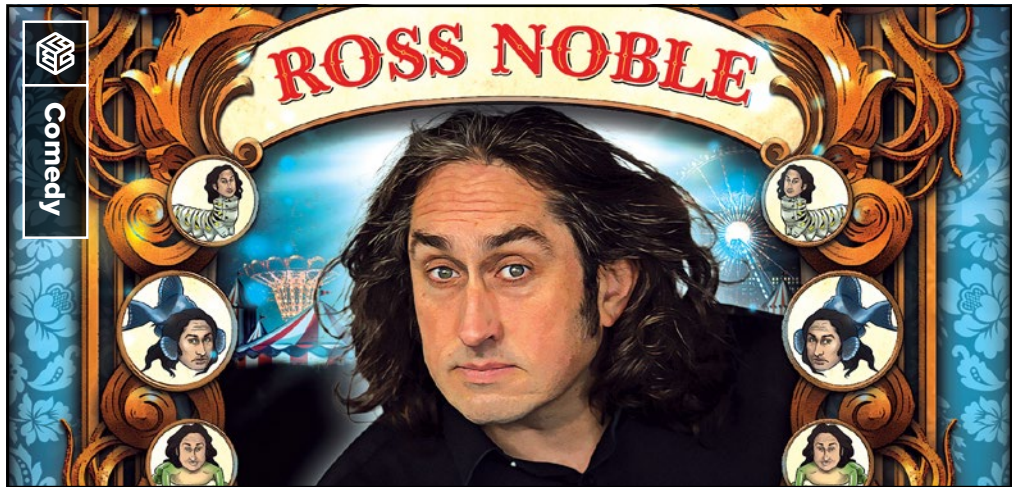
Friday 24 April, 7:30 pm

Get ready for the ultimate **Tina Turner** experience!

Rebecca O'Connor brings the ultimate **Tina Turner** experience to Logan in 2026 with her *Simply the Best* show. This isn't just a concert — it's a night of pure entertainment. Enjoy a delicious meal to set the tone, then let **Rebecca** ignite the stage with the same unstoppable energy that made **Tina** a legend. Her powerhouse vocals and magnetic presence will have you singing, dancing and feeling every beat of the Queen of Rock 'n' Roll's greatest hits.



Ticket price
\$35 - \$68



Ross Noble: Cranium of Curiosities

Wednesday 29 April, 8 pm

Get ready for a night of unpredictable hilarity as the one and only **Ross Noble** embarks on his latest tour, *Cranium of Curiosities*. Fans are invited to step into the mind of this legendary comedic rambler and prepare for a whirlwind of subject-hopping, tangential riffs and off-the-cuff absurdity.

Roll up, roll up! Or use a more conventional form of transport to get to the show. It's entirely your choice. Unless you accidentally become trapped in a barrel*. Should that happen, then just find an incline and start rolling to see the one and only

Ross Noble!

He is the Wizard of Waffle, the Rambler Royale, The Noodler's Noodler, and he's back live on

stage to tour a tornado of tangents.

What the show will be about is anybody's guess, but that's all part of the fun when you look inside his *Cranium of Curiorities*.

*"We strongly advise trying not to get trapped in a barrel before or during the performance. Despite the expression "barrel of laughs," it may impede your enjoyment of the show and potentially anger a cooper**."*

***barrel maker. We are fairly certain the mascara mishap music maker Alice Cooper would be fine with it.*



Ticket price
\$59.90 - \$64.90

LOGAN ENTERTAINMENT CENTRE

170 Wembley Rd, Logan Central, QLD

The LEC is a 35 minute drive from Brisbane City, 40 minutes from the Brisbane Airport off Pacific Motorway Exit 23 and 45 minutes from the Gold Coast off Pacific Motorway Exit 31.

Accommodation is available within a 15 minute drive from the centre.

Public transport is also available to the LEC via bus, train (Woodridge Train Station), or taxi/Uber. Please visit: **translink.com.au** to map your journey.

CONTACT US:

 Box Office: **07 3412 5626**

 **entertainment@logan.qld.gov.au**



**facebook.com/
LoganEntertainmentCentre**



instagram.com/the_lec



CAL_00627

