



**LOGAN
ENTERTAINMENT
CENTRE**



Season Highlights

MAY TO AUGUST 2026

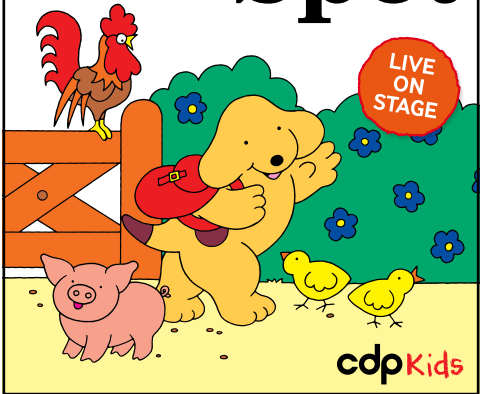
loganarts.com.au





Family

Spot



Spot Live on Stage



Saturday 9 May, 12 pm

*CDP Kids & Salspot Ltd presents
SPOT based on the books by
Eric Hill.*

Spot and his friends are off on a new adventure to visit Spot's Dad on the farm and meet the farm animals. But when they arrive, all the animals are lost! Can Spot and his friends find them all? They might need a little help from their new friends in the audience...

Eric Hill's beloved puppy comes to life on stage in a show that's fun for the whole family, with puppetry, songs, and puzzles for children from 18 months and up, and their adults.



Ticket price
\$25



The Australian Army Band Brisbane

Thursday 14 May, 2 pm

Join the *Australian Army Band Brisbane* as they present the *Great Voices of Swing*. This special performance pays homage to the golden age of swing, celebrating the unforgettable music of **Frank Sinatra** and **Ella Fitzgerald**. The full 22-piece ensemble, supported by outstanding vocalists, will bring classic big band hits to life—delivering iconic swing standards with the richness of a traditional big band sound.

Ticket includes individual cheese platter and glass of wine or soft drink.



Ticket prices
\$26

From Darkness to Light

Featuring Tchaikovsky Symphony No.5

Sun 31 May, 3 pm

From Darkness to Light is the second of four concerts presented by the **Logan City Symphony Orchestra** that explore space, place and time. Featuring **Tchaikovsky's** monumental *Fifth Symphony*.



Ticket prices
\$39-\$44

Rapids, Raves and Rhythm

Sat 18 Jul, 7:30 pm

Featuring **Beethoven's** *Symphony No.7, Rapid Raves & Rhythm* celebrates the exhilarating power of movement and energy, and the unstoppable flow of time itself.



Ticket prices
\$39-\$44

LCSO
LOGAN CITY SYMPHONY ORCHESTRA.



Live Music



Silver Series: Mist and Melodies

Friday 5 June, 11 am

The Australian Celtic Women Show brings together an all-female 7-piece musical ensemble with tantalising harmonies, dazzling costumes, whirlwind fiddle playing and Celtic dancers. Be prepared for a show that combines the richness of Celtic instruments with award-winning musicians and singers with years of experience in opera, musical theatre, folk, pop and eclectic music. *Silver Series* is proudly presented by Pearl Home Care.



Ticket prices
\$22–\$31


HOME CARE
Brisbane South



Rock n Roll Never Forgets: The Ultimate Bob Seger Experience

Saturday 20 June, 7:30 pm

Join our 9-piece band, 100% live as they take you on an ultimate journey of Rock n Roll. A once-in-a-lifetime opportunity as we take you through the many hit songs performed by Grammy Award winner and Rock and Roll Hall of Famer **Bob Seger**. **Lance**

Friend delivers an energetic, powerhouse performance accompanied by the most talented musicians that are *The Silver Bullets*. 'Turn The Page' with an energetic Rock n Roll spectacular the likes you'll never see or hear outside of Detroit, Michigan.



Ticket prices
\$74-\$79



Live Music



Rock Choir: Logan Rocks!

Saturday 27 June, 7 pm

After the stunning success of *Play It Forward's* last three sold-out massed community choir spectaculars, *ROCK CHOIR* is back with an entirely new repertoire of the greatest classic rock hits. Featuring songs by **INXS, AC/DC, R.E.M., Pink Floyd, Bon Jovi, Queen,**

Creedence Clearwater Revival, and **Coldplay,** these powerful new arrangements will once again be performed by our very own Logan Rockstars, joined by special guest soloist **Ellen Reed** (2016 *The Voice* finalist), and led by multi-award-winning master of music **Jonathon Welch AM.**



Ticket price
\$35



Living Sculptures: How the birds got their colours

Thursday 16 July, 6 pm

A stunning, Indigenous-led, contemporary performance piece fusing traditional First Nations dance, storytelling and contemporary circus. This show is a collaboration between **ARC Circus** and **Luther Cora** and his team from **Yugambah Aboriginal Dancers**.

Also *The Birds of Australia STORYBOX*, a 3D interactive cube inspired by the work of **John** and **Elizabeth Gould**, will be on display at the LEC forecourt from 1 June to 31 August.

Originally commissioned by SWELL Sculpture Festival, and supported by Arts Queensland.



SWELL
SCULPTURE FESTIVAL

ARC
CIRCUS
STORYBOX

 **Queensland**
Government



Tribute Show

BABBA



BABBA



or

Evening Show

Friday 14 August, 11 am and 7:30 pm

BABBA is the most exciting and musically accurate tribute to **ABBA** in the world. In a spellbinding performance of all the hits, *BABBA* takes you on a musical journey that will have you on your feet uncontrollably. Benny, Bjorn, Agnetha and Frida have returned to transport you back to the 70s with a show full of humour, great costumes, Swedish accents and fun-filled dance floor action.

Silver Series is proudly presented by *Pearl Home Care*.



Ticket prices

11am: \$22–\$31

7:30 pm: \$38–\$40

Pearl
HOME CARE
Brisbane South



A Taste of Ireland

Sunday 23 August, 4 pm

Performed by former World Irish dance champions—and featuring dancers from *Lord of the Dance*, *Riverdance*, and the recent West End cast of *Éireann*—*A Taste of Ireland* brings the spirit and energy of modern Ireland to life with a pint of Irish wit. Watch world-class performers blend melodic folk mash-ups, live jaw-dropping acapella tap battles, and heartfelt storytelling in a live celebration of Irish music and dance. Featuring revamped classics of *Danny Boy*, *Tell Me Ma*, *Wild Rover*, and many more well-known songs.



Ticket prices
\$74.90–\$89.90



Everly Brothers & Friends and Roy Orbison

Sunday 30 August, 2 pm

In 1956, two of the most influential acts of the 1950s and '60s—**The Everly Brothers** and **Roy Orbison**—stepped into the recording studio for the very first time. The music they created went on to inspire generations and shape the soundtrack of an era. Now, 70 years later, their timeless songs are being celebrated like never before! The much-loved **Robertson Brothers**, join forces with the internationally acclaimed **Dean Bourne**—the world's greatest **Roy Orbison** tribute artist—and the *Variety Show* team for an unforgettable 2-hour audio-visual spectacular.



Ticket prices
\$74.95–\$79.95

LOGAN ENTERTAINMENT CENTRE

170 Wembley Rd, Logan Central, QLD

The LEC is a 35 minute drive from Brisbane City, 40 minutes from the Brisbane Airport off Pacific Motorway Exit 23 and 45 minutes from the Gold Coast off Pacific Motorway Exit 31.

Accommodation is available within a 15 minute drive from the centre.

Public transport is also available to the LEC via bus, train (Woodridge Train Station), or taxi/Uber. Please visit: translink.com.au to map your journey.

CONTACT US:

 Box Office: **07 3412 5626**

 entertainment@logan.qld.gov.au



[facebook.com/
LoganEntertainmentCentre](https://facebook.com/LoganEntertainmentCentre)



instagram.com/the_lec



CAL_00699

